

RACCORDI A COMPRESSIONE, RACCORDI A BICONO E RACCORDI UNIVERSALI

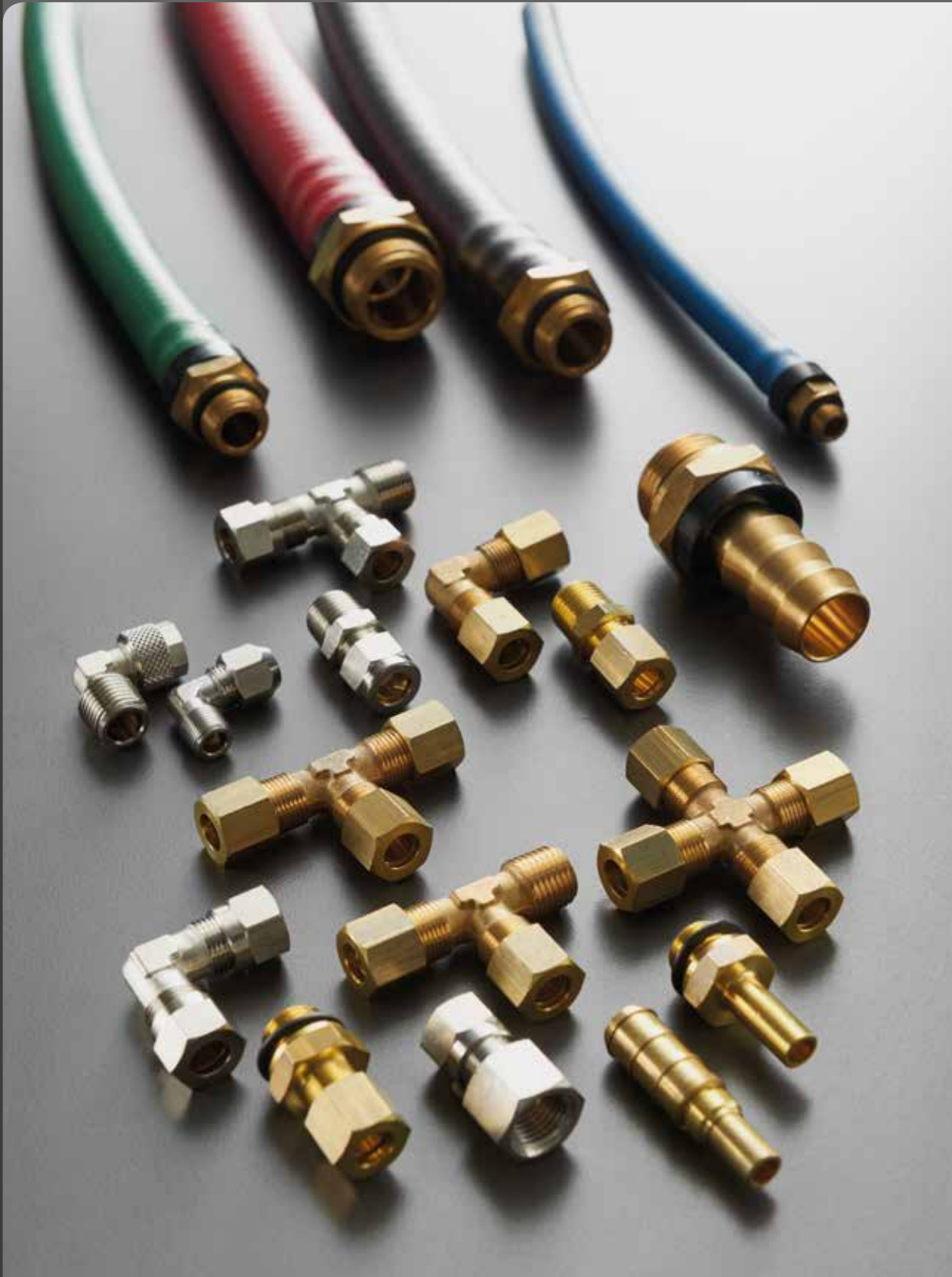
COMPRESSION FITTINGS, DOUBLE CONE FITTINGS AND UNIVERSAL FITTINGS

KLEMMRING VERSCHRAUBUNGEN, DOPPELKEGEL VERSCHRAUBUNGEN, UNIVERSAL VERSCHRAUBUNGEN

RACCORDS À COMPRESSION, RACCORDS À BICONE, RACCORDS UNIVERSELS LAITON

RACORDAJE A COMPRESIÓN, RACORDAJE UNIVERSAL A BICONO, RACORDAJE UNIVERSAL

CONEXÕES DE COMPRESSÃO, CONEXÕES UNIVERSAIS DE CONE DUPLO, CONEXÕES UNIVERSAIS



Serie Compression Fittings

Serie 9000



Serie 10000



Serie 13000



9000
10000
13000

RACCORDI UNIVERSALI

UNIVERSAL FITTINGS

UNIVERSAL VERSCHRAUBUNGEN

RACCORDS UNIVERSELS

RACORDAJE UNIVERSAL

CONEXÕES UNIVERSAIS



Serie 13000


CARATTERISTICHE TECNICHE

TECHNICAL CHARACTERISTICS
TECHNISCHE ANGABEN
CARACTÉRISTIQUES TECHNIQUES
CARACTERÍSTICAS TÉCNICAS
CARACTERÍSTICAS TÉCNICAS


Norma di Riferimento

Reference standard

Entspricht der Norm

Norme de référence

Normativa de referencia

Norma de referència

1907/2006

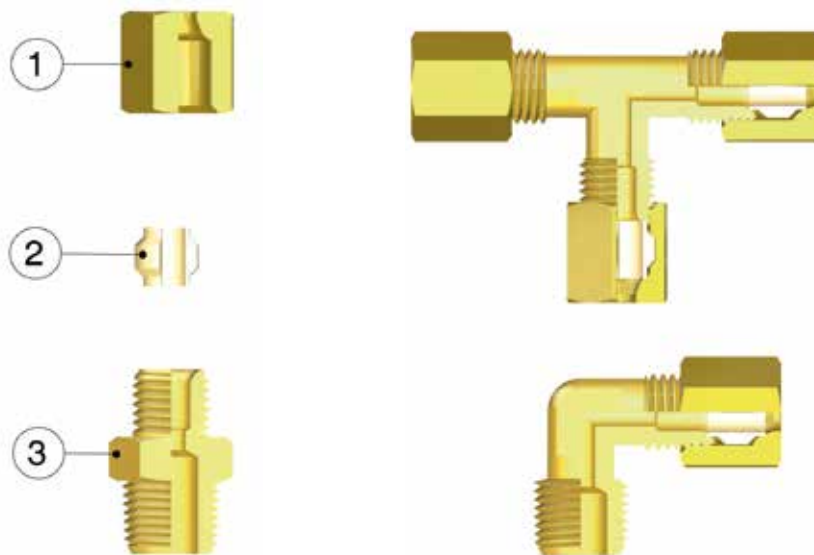
REACH ✓

2011/65/CE

RoHS ✓

 UNI EN 1254
2:2000

 PED
2014/68/UE

 SILICON
FREE

Materiali e Componenti

IT

- 1 Dado in Ottone
- 2 Ogiva in Ottone
- 3 Corpo in Ottone

Component Parts and Materials

GB

- 1 Brass Nut
- 2 Brass Olive
- 3 Brass Body

Komponenten und Materialien

DE

- 1 Übrwurfmutter Messing
- 2 Klemmring Messing
- 3 Körper Messing

Matériaux et Composants

FR

- 1 Ecrou: laiton
- 2 Bague: laiton
- 3 Corps: laiton

Materiales y Componentes

ES

- 1 Tuerca en Latón
- 2 Bicono en Latón
- 3 Cuerpo en Latón

Materiais e Componentes

PT

- 1 Porca em Latão
- 2 Bucha em Latão
- 3 Corpo em Latão


Tubi di Collegamento

IT

Tubi in rame, ferro, acciaio, alluminio, ottone, PA.

Connection Tubes

GB

Tubes made in copper, steel, iron, aluminium, brass, PA.

Geeignete Rohre

DE

Rohre in Kupfer, Eisen, Stahl, Aluminium, Messing, PA.

Tubes Conseillés

FR

Tubes en cuivre, acier, aluminium, laiton, PA.

Tubos de Conexión

ES

Tubos en cobre, hierro, acero, aluminio, latón, PA.

Tubos de Conexão

PT

Tubos de cobre, ferro, aço, alumínio, latão, PA.


Filettatura

IT

Gas conica conforme ISO 7.1, BS 21, DIN 2999.
Gas cilindrica conforme ISO 228 Classe A.
Metrica conforme ISO R/262.

Threads

GB

Tapered gas in conformity with ISO 7.1, BS 21, DIN 2999.
Parallel gas in conformity with ISO 228 Class A.
Metric in conformity with ISO R/262.

Gewindearten

DE

Konisches Gewinde nach Norm ISO 7.1, BS 21, DIN 2999.
Zylindrisches Gewinde nach Norm ISO 228 Classe A.
Metrisches Gewinde nach Norm ISO R/262.

Filetages

FR

Filetage conique conforme: ISO 7.1, BS 21, DIN 2999.
Filetage cylindrique conforme: ISO 228 Class A.
Filetage métrique conforme: ISO R/262.

Roscas

ES

Gas cónica conforme ISO 7.1, BS 21, DIN 2999.
Gas cilíndrica conforme ISO 228 Clase A.
Métrica conforme ISO R/262.

Roscas

PT

Gas cónica conforme ISO 7.1, BS 21, DIN 2999.
Gas paralela conforme ISO 228 Classe A.
Métrica conforme ISO R/262.


Pressioni e Temperature
IT

Pressioni e temperature vengono determinate dal tipo di tubo impiegato, pertanto tali valori sono da definirsi in base alle caratteristiche del tubo stesso.

Riportiamo di seguito i valori delle pressioni massime consigliate per l'utilizzo dei raccordi con tubi di rame dallo spessore di 1 mm a 20° C.

I valori delle pressioni consigliate, riportate in tabella, sono stati ottenuti dai valori di prova adottando un Coefficiente di Sicurezza 4.

Sono disponibili i certificati delle prove rilasciati dai vari laboratori che le hanno eseguite.

Pressures and Temperatures
GB

The working pressures and working temperatures depend on which type of tube is used, for this reason, the values must be determined in accordance with the tube's features.

Hereunder, we specify the values of the maximum pressure advised for the fittings at a temperature of 20° C connected with copper tube, which has a thickness of 1 mm.

The values of working pressures advised, specified in table have been obtained from the test values using a Safety Factor 4.

It is available the test report made by the external laboratory test.

Druckbereich und Temperatur
DE

Drücke und Temperaturen sind definiert durch die verwendete Ausführung der Leitung, d.h. die Werte der eingesetzten Rohre sind zu beachten.

Nachfolgend geben wir die Werte des maximalen Druckes für den Einsatz der Verschraubungen mit Kupferrohren an, deren Wandstärke min. 1 mm beträgt und bei einer Temperatur von 20° C.

Es muss berücksichtigt werden, dass die angegebenen Druckwerte in der Tabelle mit einem Sicherheitsfaktors von 4 berechnet wurden.

Es stehen Prüfberichte zur Verfügung, die von verschiedenen, externen Labors gemacht wurden.

Pressions et Températures
FR

type de tube utilisé. Pour cette raison, les valeurs doivent être déterminées en conformité avec les caractéristiques du tube. Ci-dessous, nous indiquons les valeurs de la pression maximale recommandée pour une connexion avec un tube en cuivre de 1 mm d'épaisseur à une température de 20° C.

Les pressions de service indiquées ont été calculées avec un coefficient de sécurité de 4.

Des rapports externes de tests sont disponibles sur demande pour attester ces valeurs.

Presiones y Temperaturas
ES

Presión y temperatura vienen determinadas según el tipo de tubo empleado, por lo tanto estos valores se definen en base a las características del mismo tubo. Representamos a continuación los valores de las presiones máximas aconsejadas para la utilización de los racores con tubo de cobre espesor 1 mm a 20° C.

Los valores de las presiones aconsejadas, representadas en la tabla, han sido obtenidas de valores de prueba adoptando un coeficiente de seguridad 4.

Están disponibles los certificados de las pruebas realizadas en distintos laboratorios especializados.

Pressões e Temperaturas
PT

Pressões e temperaturas dependem do tipo de tubo aplicado, portanto tais valores devem ser definidos com base nas características do tubo em questão.

A seguir apresentamos os valores das pressões máximas aconselhadas para a utilização das conexões com tubos de cobre de espessura de 1 mm a 20° C.

Os valores das pressões aconselhadas, reportados na tabela, foram obtidas dos valores de teste adotando-se um Coeficiente de Segurança 4.

Os certificados de teste executados por laboratórios externos estão disponíveis.


Temperature

Temperatures

Temperatur

Températures

Temperaturas

Temperaturas

- 60 °C

+ 300 °C

| Misura Size Größe Dimensions Tamaño Tamanho | Pressione massima consigliata - 20 °C Maximum pressure advised - 20 °C Maximal empfohlener Druck - 20 °C Pression maximum conseillée - 20 °C Presión máxima aconsejada - 20 °C Pressão máxima aconselhada - 20 °C |
|--|--|
| Ø | kg/cm ² bar |
| 4 | 150 148.4 |
| 6 | 150 148.4 |
| 8 | 135 133.6 |
| 10 | 95 94 |
| 12 | 75 74.2 |
| 14 | 100 99 |
| 15 | 95 94 |
| 16 | 95 94 |
| 18 | 70 69.3 |
| 22 | 70 69.3 |


Fluidi compatibili

Acqua / Olio / Aria compressa

Fluidi in genere per l'impiantistica idraulica, oleodinamica, idropneumatica, ecc.

Fluids

Water / Oils / Compressed air

Fluids in general for the hydraulic, pneumatic and oil dynamic plants etc.

Geeignete Medien

Wasser / Oel / Druckluft

Medien im Allgemeinen für hydraulische-, hydro-pneumatische- und pneumatische Anlagen, usw.

Fluides compatibles

Eau / Huile / Air comprimé

Fluides courants utilisés en hydraulique et pneumatique, etc.

Fluidos compatibles

Agua / Aceite / Aire comprimido

Fluidos en general para los campos hidráulicos, neumáticos y oleodinámicos, etc.

Fluidos compatíveis

Água / Oleo / Ar comprimido

Fluidos em geral para aplicações hidráulicas, oleodinâmicas, hidropneumáticas, etc.


Coppia di serraggio

Torque specifications

Angaben Drehmoment

Couple de serrage

Par de apriete

Especificações de Torque

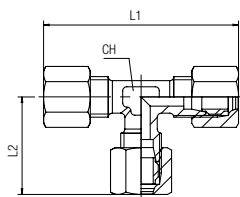
| COPPIE DI SERRAGGIO DADO SU OGIVA TORQUE FORCE ON OLIVE NUT ANZUGSDREHMOMENT ZWISCHEN MUTTER UND KLEMMRING COUPLE DE SERRAGE DE L'ECROU SUR LA BAGUE OLIVE PAR DE APRIETE DE LA TUERCA DE OJIVA TORQUE DE APERTO PARA PORCA EM BUCHA | | | |
|---|--|---|---|
| Ø | N° Giri chiave N° Key turns N° Schlüssel Umdrehungen N° de tours N° Giro de la tuerca N° Rotação da porca | Forza Force Drehmoment Couple Fuerza Força | Forza Force Drehmoment Couple Fuerza Força |
| mm | | Nm | kgf |
| 4 | 1 1/4 + 1/4 | 15 | 1.55 |
| 6 | 1 1/4 + 1/4 | 18 | 1.85 |
| 8 | 1 1/4 + 1/4 | 22 | 2.25 |
| 10 | 1 1/4 + 1/4 | 45 | 2.25 |
| 12 | 1 1/4 + 1/4 | 70 | 4.6 |
| 14 | 1 1/4 + 1/4 | 80 | 8.15 |
| 15 | 1 + 1/4 | 90 | 9.2 |
| 16 | 1 + 1/4 | 90 | 9.2 |
| 18 | 1 + 1/4 | 140 | 14.3 |
| 22 | 1 + 1/4 | 160 | 16.3 |

Forze di serraggio, minime consigliate, e n° di giri utili, per garantire un montaggio corretto.
Torque force, minimum recommended, and useful turn, to ensure a correct installation.
Empfohlenes Anzugsdrehmoment und mindest Umdrehungszahl für eine korrekte montage.
Couple de serrage minimum recommandé et nombre de tours pour assurer une installation correcte.
Par de apriete mínimo recomendado y n. giros necesarios para garantizar un montaje correcto.
Torque de aperto mínimo garantido, n. rotação necessário para garantir a correcta instalação.

13200

RACCORDO A T INTERMEDIO

TEE CONNECTOR
T-ANSCHLUSS
RACCORD TÉ
RACOR A T INTERMEDIO
CONEXÃO EM "T" TUBO-TUBO

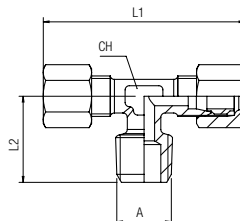


| Code | Tube | L1 | L2 | CH | Pack. |
|--------------|------|------|------|----|-------|
| 13200 00 001 | 4 | 44 | 22 | 8 | 10 |
| 13200 00 002 | 6 | 48 | 24 | 9 | 10 |
| 13200 00 003 | 8 | 57 | 28.5 | 12 | 10 |
| 13200 00 004 | 10 | 64 | 32 | 13 | 10 |
| 13200 00 005 | 12 | 69 | 35 | 14 | 10 |
| 13200 00 006 | 14 | 78 | 39 | 18 | 10 |
| 13200 00 007 | 15 | 77 | 38.5 | 18 | 10 |
| 13200 00 008 | 16 | 78.5 | 39.5 | 17 | 10 |
| 13200 00 009 | 18 | 83 | 41.5 | 20 | 10 |
| 13200 00 010 | 22 | 89 | 44.5 | 27 | 10 |

13220

RACCORDO A T MASCHIO CENTRALE

TEE MALE ADAPTOR CENTRE LEG
T-EINSCHRAUBVERSCHRAUBUNG KONISCH
TÉ À PIQUAGE MÂLE CENTRAL, CONIQUE
RACOR A T MACHO CENTRAL
CONEXÃO EM "T" COM ROSCA MACHO CENTRAL

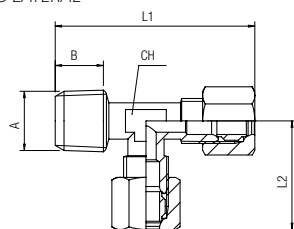


| Code | Tube | A | L1 | L2 | CH | Pack. |
|--------------|------|-----|------|------|----|-------|
| 13220 00 001 | 4 | 1/8 | 45 | 15 | 8 | 10 |
| 13220 00 002 | 6 | 1/8 | 48 | 16.5 | 9 | 10 |
| 13220 00 003 | 6 | 1/4 | 48 | 20.5 | 9 | 10 |
| 13220 00 004 | 8 | 1/8 | 57 | 16.5 | 12 | 10 |
| 13220 00 005 | 8 | 1/4 | 57 | 20.5 | 12 | 10 |
| 13220 00 006 | 8 | 3/8 | 61 | 23 | 13 | 10 |
| 13220 00 007 | 10 | 1/4 | 64 | 22.5 | 13 | 10 |
| 13220 00 008 | 10 | 3/8 | 64 | 23.5 | 13 | 10 |
| 13220 00 009 | 10 | 1/2 | 68 | 27 | 14 | 10 |
| 13220 00 010 | 12 | 1/4 | 69 | 24.5 | 14 | 10 |
| 13220 00 011 | 12 | 3/8 | 69 | 25 | 14 | 10 |
| 13220 00 012 | 12 | 1/2 | 69 | 26.5 | 14 | 10 |
| 13220 00 013 | 14 | 3/8 | 74 | 26 | 16 | 10 |
| 13220 00 014 | 14 | 1/2 | 77 | 31 | 18 | 10 |
| 13220 00 015 | 15 | 1/2 | 78 | 31 | 18 | 10 |
| 13220 00 016 | 16 | 1/2 | 78.5 | 29 | 17 | 10 |
| 13220 00 017 | 18 | 1/2 | 83 | 29.5 | 20 | 10 |
| 13220 00 018 | 18 | 3/4 | 83 | 32.5 | 20 | 10 |
| 13220 00 019 | 22 | 3/4 | 89 | 34 | 27 | 10 |

13230

RACCORDO A T MASCHIO LATERALE

TEE MALE ADAPTOR OFF SET LEG
L-EINSCHRAUBVERSCHRAUBUNG KONISCH
TÉ À PIQUAGE LATÉRAL, CONIQUE
RACOR A T MACHO LATERAL
CONEXÃO EM "T" COM ROSCA MACHO LATERAL

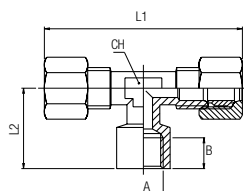


| Code | Tube | A | L1 | L2 | CH | Pack. |
|--------------|------|-----|------|------|----|-------|
| 13230 00 001 | 4 | 1/8 | 37.5 | 22.5 | 8 | 10 |
| 13230 00 002 | 6 | 1/8 | 40 | 25 | 9 | 10 |
| 13230 00 003 | 6 | 1/4 | 44 | 24 | 9 | 10 |
| 13230 00 004 | 8 | 1/8 | 45.5 | 28.5 | 12 | 10 |
| 13230 00 005 | 8 | 1/4 | 49 | 28.5 | 12 | 10 |
| 13230 00 006 | 8 | 3/8 | 52 | 28.5 | 13 | 10 |
| 13230 00 007 | 10 | 1/4 | 55 | 32 | 13 | 10 |
| 13230 00 008 | 10 | 3/8 | 55.5 | 32 | 13 | 10 |
| 13230 00 009 | 12 | 3/8 | 58.5 | 35 | 14 | 10 |
| 13230 00 010 | 12 | 1/2 | 60 | 35.5 | 15 | 10 |
| 13230 00 011 | 14 | 1/2 | 67 | 38.5 | 18 | 10 |

13240

RACCORDO A T FEMMINA CENTRALE

TEE FEMALE CENTRE LEG
T-EINSCHRAUBVERSCHRAUBUNG INNENGEWINDE
TÉ FEMELLE CENTRAL
RACOR A T HEMBRA CENTRAL
CONEXÃO EM "T" COM ROSCA FÊMEA CENTRAL

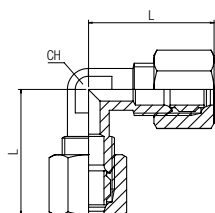


| Code | Tube | A | B | L1 | L2 | CH | Pack. |
|--------------|------|-----|------|------|------|----|-------|
| 13240 00 001 | 4 | 1/8 | 8.5 | 45 | 18 | 8 | 10 |
| 13240 00 002 | 6 | 1/8 | 8.5 | 47.5 | 19.5 | 9 | 10 |
| 13240 00 003 | 6 | 1/4 | 11 | 56 | 24.5 | 13 | 10 |
| 13240 00 004 | 8 | 1/8 | 8.5 | 57 | 19.5 | 12 | 10 |
| 13240 00 005 | 8 | 1/4 | 11 | 59 | 24.5 | 13 | 10 |
| 13240 00 007 | 10 | 1/4 | 11 | 64 | 24.5 | 13 | 10 |
| 13240 00 008 | 10 | 3/8 | 10.5 | 58 | 26 | 14 | 10 |
| 13240 00 009 | 10 | 1/2 | 10.5 | 69 | 26 | 15 | 10 |
| 13240 00 010 | 12 | 1/4 | 11 | 69 | 25.5 | 14 | 10 |
| 13240 00 011 | 12 | 3/8 | 10.5 | 69 | 26 | 14 | 10 |
| 13240 00 012 | 12 | 1/2 | 10.5 | 70 | 26 | 15 | 10 |
| 13240 00 013 | 14 | 1/2 | 10.5 | 77 | 30 | 18 | 10 |
| 13240 00 014 | 15 | 1/2 | 10.5 | 78 | 30 | 18 | 10 |
| 13240 00 015 | 16 | 1/2 | 10.5 | 77.5 | 28.5 | 17 | 10 |
| 13240 00 016 | 18 | 1/2 | 10.5 | 83 | 28 | 20 | 10 |
| 13240 00 017 | 18 | 3/4 | 14 | 83 | 34 | 20 | 10 |

13260

RACCORDO A L INTERMEDIO

ELBOW CONNECTOR
WINKELVERSCHRAUBUNG
RACCORD EQUERRE
RACOR A L INTERMEDIO
CONEXÃO EM "L" TUBO-TUBO

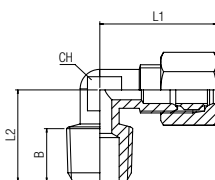


| Code | Tube | L | CH | Pack. |
|--------------|------|------|----|-------|
| 13260 00 001 | 4 | 21.5 | 8 | 10 |
| 13260 00 002 | 6 | 24 | 9 | 10 |
| 13260 00 003 | 8 | 30 | 11 | 10 |
| 13260 00 004 | 10 | 33 | 13 | 10 |
| 13260 00 005 | 12 | 36 | 14 | 10 |
| 13260 00 006 | 14 | 37 | 17 | 10 |
| 13260 00 007 | 15 | 38 | 17 | 10 |
| 13260 00 008 | 16 | 39.5 | 17 | 10 |
| 13260 00 009 | 18 | 41.5 | 20 | 10 |
| 13260 00 010 | 22 | 44.5 | 27 | 10 |

13280

RACCORDO A L MASCHIO

ELBOW MALE ADAPTOR
WINKELVERSCHRAUBUNG KONISCH
EQUERRE MÂLE, CONIQUE
RACOR A L MACHO
CONEXÃO EM "L" COM ROSCA MACHO

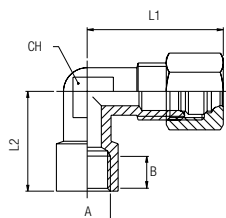


| Code | Tube | A | L1 | L2 | CH | Pack. |
|--------------|------|-----|------|------|----|-------|
| 13280 00 001 | 4 | 1/8 | 21.5 | 15 | 8 | 10 |
| 13280 00 002 | 6 | 1/8 | 24 | 17 | 9 | 10 |
| 13280 00 003 | 6 | 1/4 | 24 | 19 | 9 | 10 |
| 13280 00 004 | 8 | 1/8 | 30 | 18 | 11 | 10 |
| 13280 00 005 | 8 | 1/4 | 30 | 21.5 | 11 | 10 |
| 13280 00 006 | 8 | 3/8 | 30.5 | 24 | 13 | 10 |
| 13280 00 007 | 10 | 1/4 | 33 | 23.5 | 13 | 10 |
| 13280 00 008 | 10 | 3/8 | 33 | 24.5 | 13 | 10 |
| 13280 00 009 | 10 | 1/2 | 35 | 25 | 14 | 10 |
| 13280 00 010 | 12 | 1/4 | 36 | 24 | 14 | 10 |
| 13280 00 011 | 12 | 3/8 | 36 | 26 | 14 | 10 |
| 13280 00 012 | 12 | 1/2 | 36 | 25 | 14 | 10 |
| 13280 00 013 | 14 | 3/8 | 39 | 26 | 17 | 10 |
| 13280 00 014 | 14 | 1/2 | 39 | 28.5 | 17 | 10 |
| 13280 00 015 | 15 | 1/2 | 39 | 28.5 | 17 | 10 |
| 13280 00 016 | 16 | 1/2 | 40 | 28 | 17 | 10 |
| 13280 00 017 | 18 | 1/2 | 41.5 | 29.5 | 20 | 10 |
| 13280 00 018 | 18 | 3/4 | 41.5 | 32 | 20 | 10 |
| 13280 00 019 | 22 | 3/4 | 44.5 | 34 | 27 | 10 |

13290

RACCORDO A L FEMMINA

ELBOW FEMALE ADAPTOR
WINKELVERSCHRAUBUNG INNENGEWINDE
EQUERRE FEMELLE
RACOR A L HEMBRA
CONEXÃO EM "L" COM ROSCA FÊMEA



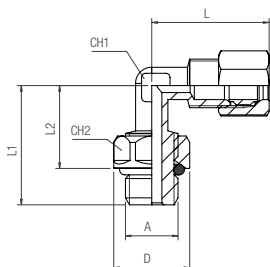
| Code | Tube | A | B | L1 | L2 | CH | Pack. |
|--------------|------|-----|------|------|------|----|-------|
| 13290 00 001 | 4 | 1/8 | 8.5 | 23 | 18 | 8 | 10 |
| 13290 00 002 | 6 | 1/8 | 8.5 | 24 | 18 | 9 | 10 |
| 13290 00 003 | 6 | 1/4 | 10.5 | 24.5 | 22.5 | 11 | 10 |
| 13290 00 004 | 8 | 1/8 | 8.5 | 30 | 21 | 11 | 10 |
| 13290 00 005 | 8 | 1/4 | 11 | 30.5 | 25.5 | 13 | 10 |
| 13290 00 006 | 8 | 3/8 | 10.5 | 31 | 25 | 14 | 10 |
| 13290 00 007 | 10 | 1/4 | 11 | 34 | 25 | 13 | 10 |
| 13290 00 008 | 10 | 3/8 | 10.5 | 34 | 25 | 14 | 10 |
| 13290 00 009 | 10 | 1/2 | 10.5 | 34 | 27 | 15 | 10 |
| 13290 00 010 | 12 | 1/4 | 11 | 36 | 26 | 14 | 10 |
| 13290 00 011 | 12 | 3/8 | 10.5 | 36 | 26 | 14 | 10 |
| 13290 00 012 | 12 | 1/2 | 10.5 | 36 | 27 | 15 | 10 |
| 13290 00 013 | 14 | 1/2 | 10.5 | 39 | 30 | 18 | 10 |
| 13290 00 014 | 15 | 1/2 | 10.5 | 39 | 30 | 18 | 10 |
| 13290 00 015 | 16 | 1/2 | 10.5 | 41.5 | 30 | 18 | 10 |
| 13290 00 016 | 18 | 1/2 | 10.5 | 41.5 | 29 | 20 | 10 |
| 13290 00 017 | 18 | 3/4 | 14 | 44.5 | 33.5 | 20 | 10 |

13300

RACCORDO A L ORIENTABILE MASCHIO

ORIENTING ELBOW MALE ADAPTOR
 WINKELVERSCHRAUBUNG (DREHBAR)
 EQUERRE ORIENTABLE MÂLE
 RACOR A L ORIENTABLE MACHO
 CONEXÃO MACHO EM "L" ORIENTÁVEL

New



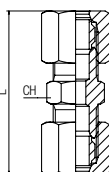
| Code | Tube | A | L | L1 | L2 | D | CH1 | CH2 | Pack. |
|--------------|------|-----|------|------|------|----|-----|-----|-------|
| 13300 00 001 | 4 | 1/8 | 23 | 22.5 | 15.5 | 15 | 9 | 14 | 10 |
| 13300 00 002 | 4 | 1/4 | 23 | 30 | 19 | 19 | 9 | 17 | 10 |
| 13300 00 003 | 6 | 1/8 | 24.5 | 23 | 15.5 | 15 | 9 | 14 | 10 |
| 13300 00 004 | 6 | 1/4 | 24 | 21 | 19 | 19 | 9 | 17 | 10 |
| 13300 00 005 | 8 | 1/8 | 29 | 23 | 15.5 | 15 | 9 | 14 | 10 |
| 13300 00 006 | 8 | 1/4 | 29 | 29.5 | 19 | 19 | 9 | 17 | 10 |
| 13300 00 007 | 8 | 3/8 | 29.5 | 30.5 | 19 | 22 | 13 | 20 | 10 |
| 13300 00 008 | 10 | 1/4 | 32.5 | 30 | 19 | 19 | 13 | 17 | 10 |
| 13300 00 009 | 10 | 3/8 | 32.5 | 30.5 | 19 | 22 | 13 | 20 | 10 |
| 13300 00 010 | 10 | 1/2 | 33.5 | 39 | 24 | 25 | 17 | 23 | 10 |
| 13300 00 011 | 14 | 3/8 | 38.5 | 33.5 | 19 | 22 | 17 | 20 | 10 |
| 13300 00 012 | 14 | 1/2 | 38.5 | 39 | 24 | 25 | 17 | 23 | 10 |
| 13300 00 013 | 18 | 1/2 | 41.5 | 39.5 | 24 | 25 | 20 | 23 | 10 |
| 13300 00 014 | 18 | 3/4 | 41.5 | 42 | 25.5 | 32 | 20 | 30 | 10 |
| 13300 00 015 | 22 | 3/4 | 44.5 | 50 | 25.5 | 32 | 20 | 30 | 10 |
| 13300 00 016 | 22 | 1" | 44.5 | 54 | 35 | 44 | 27 | 41 | 10 |

| | | |
|--|------------|------------|
| | min | max |
| | - 20 °C | + 80 °C |

13460

RACCORDO DIRITTO INTERMEDIO

STRAIGHT CONNECTOR
 VERBINDUNGSVERSCHRAUBUNG
 RACCORD UNION DOUBLE
 RACOR RECTO INTERMEDIO
 CONEXÃO RETA TUBO-TUBO

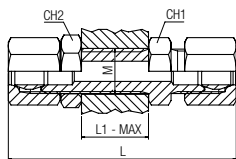


| Code | Tube | L | CH | Pack. |
|--------------|------|------|----|-------|
| 13460 00 001 | 4 | 33 | 10 | 10 |
| 13460 00 002 | 6 | 36 | 11 | 10 |
| 13460 00 003 | 8 | 40 | 13 | 10 |
| 13460 00 004 | 10 | 45.5 | 16 | 10 |
| 13460 00 005 | 12 | 47 | 18 | 10 |
| 13460 00 006 | 14 | 47.5 | 21 | 10 |
| 13460 00 007 | 15 | 52 | 21 | 10 |
| 13460 00 008 | 16 | 52.5 | 22 | 10 |
| 13460 00 009 | 18 | 56 | 26 | 10 |
| 13460 00 010 | 22 | 58.5 | 30 | 10 |

13465

RACCORDO INTERMEDIO DI ATTRAVERSAMENTO

BULKHEAD CONNECTOR
 SCHOTTVERSCHRAUBUNG
 RACCORD DROIT TRAVERSÉE DE CLOISON
 RACOR INTERMEDIO PASATABIQUES
 CONEXÃO PASSAMURO TUBO-TUBO

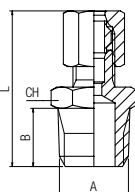


| Code | Tube | L | L max | CH1 | CH2 | M | Pack. |
|--------------|------|------|-------|-----|-----|---------|-------|
| 13465 00 001 | 4 | 49 | 12 | 10 | 13 | M8x1 | 10 |
| 13465 00 002 | 6 | 52.5 | 12.5 | 13 | 14 | M10x1 | 10 |
| 13465 00 003 | 8 | 56.5 | 12.5 | 14 | 17 | M12x1 | 10 |
| 13465 00 004 | 10 | 63.5 | 13 | 19 | 22 | M16x1,5 | 10 |
| 13465 00 005 | 12 | 70.5 | 17 | 22 | 22 | M18x1,5 | 10 |
| 13465 00 006 | 14 | 72.5 | 19 | 24 | 24 | M20x1,5 | 10 |

13480

RACCORDO DIRITTO MASCHIO CONICO

STRAIGHT MALE ADAPTOR (TAPER)
 GERADE EINSCHRAUBVERSCHRAUBUNG KONISCH
 RACCORD DROIT MÂLE CONIQUE
 RACOR RECTO MACHO CÔNICO
 CONEXÃO RETA COM ROSCA MACHO CÔNICA



| Code | Tube | A | L | CH | Pack. |
|--------------|------|-----|------|----|-------|
| 13480 00 001 | 4 | 1/8 | 26.5 | 11 | 10 |
| 13480 00 002 | 4 | 1/4 | 29.5 | 14 | 10 |
| 13480 00 003 | 6 | 1/8 | 28 | 11 | 10 |
| 13480 00 004 | 6 | 1/4 | 31.5 | 14 | 10 |
| 13480 00 005 | 6 | 3/8 | 32 | 17 | 10 |
| 13480 00 006 | 8 | 1/8 | 30 | 13 | 10 |
| 13480 00 007 | 8 | 1/4 | 33.5 | 14 | 10 |
| 13480 00 008 | 8 | 3/8 | 34 | 17 | 10 |
| 13480 00 009 | 10 | 1/4 | 36 | 16 | 10 |
| 13480 00 010 | 10 | 3/8 | 36.5 | 17 | 10 |
| 13480 00 011 | 10 | 1/2 | 38 | 21 | 10 |
| 13480 00 012 | 12 | 1/4 | 37 | 18 | 10 |
| 13480 00 013 | 12 | 3/8 | 37.5 | 18 | 10 |
| 13480 00 014 | 12 | 1/2 | 39 | 21 | 10 |
| 13480 00 015 | 14 | 3/8 | 37.5 | 20 | 10 |
| 13480 00 016 | 14 | 1/2 | 40 | 21 | 10 |
| 13480 00 017 | 15 | 1/2 | 40 | 21 | 10 |
| 13480 00 018 | 16 | 1/2 | 42.5 | 22 | 10 |
| 13480 00 019 | 16 | 3/4 | 44 | 27 | 10 |
| 13480 00 020 | 18 | 1/2 | 43.5 | 24 | 10 |
| 13480 00 021 | 18 | 3/4 | 45 | 27 | 10 |
| 13480 00 022 | 22 | 1/2 | 46 | 30 | 10 |
| 13480 00 023 | 22 | 3/4 | 47.5 | 30 | 10 |

13483

New

RACCORDO DIRITTO MASCHIO CILINDRICO CON OR

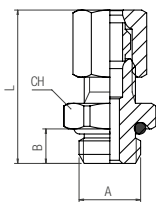
STRAIGHT MALE ADAPTOR WITH OR (PARALLEL)

EINSCHRAUBVERSCHRAUBUNG ZYLINDRISCH MIT OR

RACCORD DROIT AVEC JOINT TORIQUE MALE CYLINDRIQUE

RACOR RECTO MACHO CILÍNDRICO CON TÓRICA

CONEXÃO RETA COM ROSCA MACHO PARALELA COM O-RING



| Code | Tube | A | L | B | CH | Pack. |
|--------------|------|-----|------|-----|----|-------|
| 13483 00 001 | 4 | 1/8 | 24 | 5.5 | 13 | 10 |
| 13483 00 002 | 6 | 1/8 | 25 | 5.5 | 13 | 10 |
| 13483 00 003 | 6 | 1/4 | 27.5 | 8 | 16 | 10 |
| 13483 00 004 | 8 | 1/8 | 27 | 5.5 | 13 | 10 |
| 13483 00 005 | 8 | 1/4 | 29.5 | 8 | 16 | 10 |
| 13483 00 006 | 8 | 3/8 | 30.5 | 8 | 20 | 10 |
| 13483 00 007 | 10 | 1/4 | 32 | 8 | 16 | 10 |
| 13483 00 008 | 10 | 3/8 | 32.5 | 8 | 20 | 10 |
| 13483 00 027 | 12 | 1/4 | 33.5 | 8 | 18 | 10 |
| 13483 00 028 | 12 | 3/8 | 33 | 8 | 20 | 10 |
| 13483 00 029 | 12 | 1/2 | 36 | 9.5 | 25 | 10 |
| 13483 00 009 | 14 | 3/8 | 34 | 8 | 22 | 10 |
| 13483 00 010 | 14 | 1/2 | 36.5 | 9.5 | 25 | 10 |
| 13483 00 030 | 15 | 3/8 | 34 | 8 | 22 | 10 |
| 13483 00 025 | 15 | 1/2 | 37 | 9.5 | 25 | 10 |
| 13483 00 031 | 16 | 3/8 | 37 | 8 | 22 | 10 |
| 13483 00 032 | 16 | 1/2 | 39.5 | 9.5 | 25 | 10 |
| 13483 00 033 | 18 | 1/2 | 40.5 | 9.5 | 25 | 10 |
| 13483 00 034 | 18 | 3/4 | 45 | 11 | 34 | 10 |
| 13483 00 011 | 22 | 3/4 | 48 | 11 | 34 | 10 |
| 13483 00 012 | 22 | 1" | 48.5 | 12 | 40 | 10 |

| | min | max |
|-------------|---------|---------|
| Temperature | - 20 °C | + 80 °C |

13485

RACCORDO DIRITTO MASCHIO CILINDRICO

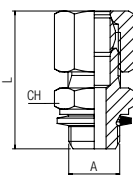
STRAIGHT MALE ADAPTOR (PARALLEL)

GERADE EINSCHRAUBVERSCHRAUBUNG ZYLINDRISCH

RACCORD DROIT MÂLE CYLINDRIQUE

RACOR RECTO MACHO CILÍNDRICO

CONEXÃO RETA COM ROSCA MACHO PARALELA



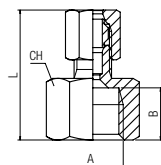
| Code | Tube | A | L | CH | Pack. |
|--------------|------|-----|------|----|-------|
| 13485 00 001 | 4 | 1/8 | 26 | 13 | 10 |
| 13485 00 002 | 6 | 1/8 | 27 | 13 | 10 |
| 13485 00 003 | 6 | 1/4 | 30.5 | 17 | 10 |
| 13485 00 004 | 8 | 1/8 | 30 | 13 | 10 |
| 13485 00 005 | 8 | 1/4 | 32.5 | 17 | 10 |
| 13485 00 006 | 8 | 3/8 | 36.5 | 22 | 10 |
| 13485 00 007 | 10 | 1/4 | 35 | 17 | 10 |
| 13485 00 008 | 10 | 3/8 | 39 | 22 | 10 |
| 13485 00 009 | 14 | 3/8 | 40 | 22 | 10 |
| 13485 00 010 | 14 | 1/2 | 42 | 27 | 10 |
| 13485 00 011 | 22 | 3/4 | 49 | 32 | 10 |
| 13485 00 012 | 22 | 1" | 52 | 40 | 10 |

| | min | max |
|-------------|---------|---------|
| Temperature | - 20 °C | + 80 °C |

13500

RACCORDO DIRITTO FEMMINA

STRAIGHT FEMALE ADAPTOR
 AUFSCHRAUBVERSCHRAUBUNG
 RACCORD DROIT TARAUEE
 RACOR RECTO HEMBRA
 CONEXÃO RETA COM ROSCA FÊMEA

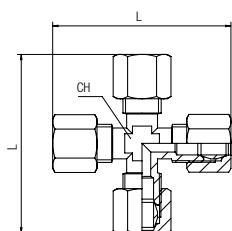


| Code | Tube | A | B | L | CH | Pack. |
|--------------|------|-----|------|------|----|-------|
| 13500 00 001 | 4 | 1/8 | 8.5 | 25 | 14 | 10 |
| 13500 00 002 | 4 | 1/4 | 11 | 27.5 | 17 | 10 |
| 13500 00 003 | 6 | 1/8 | 8.5 | 26 | 14 | 10 |
| 13500 00 004 | 6 | 1/4 | 11 | 28.5 | 17 | 10 |
| 13500 00 005 | 8 | 1/8 | 8.5 | 28 | 14 | 10 |
| 13500 00 006 | 8 | 1/4 | 11 | 30.5 | 17 | 10 |
| 13500 00 007 | 8 | 3/8 | 11.5 | 31.5 | 20 | 10 |
| 13500 00 008 | 10 | 1/4 | 11 | 33 | 17 | 10 |
| 13500 00 009 | 10 | 3/8 | 11.5 | 33.5 | 20 | 10 |
| 13500 00 010 | 10 | 1/2 | 13.5 | 35.5 | 24 | 10 |
| 13500 00 011 | 12 | 1/4 | 14.5 | 34 | 18 | 10 |
| 13500 00 012 | 12 | 3/8 | 11.5 | 34.5 | 20 | 10 |
| 13500 00 013 | 12 | 1/2 | 13.5 | 34 | 24 | 10 |
| 13500 00 014 | 14 | 3/8 | 11.5 | 36.5 | 20 | 10 |
| 13500 00 015 | 14 | 1/2 | 13.5 | 34 | 24 | 10 |
| 13500 00 016 | 15 | 1/2 | 13.5 | 36.5 | 24 | 10 |
| 13500 00 017 | 16 | 1/2 | 13.5 | 39 | 24 | 10 |
| 13500 00 018 | 16 | 3/4 | 14.5 | 40.5 | 30 | 10 |
| 13500 00 019 | 18 | 1/2 | 13.5 | 40 | 24 | 10 |
| 13500 00 020 | 18 | 3/4 | 14.5 | 41.5 | 30 | 10 |
| 13500 00 021 | 22 | 3/4 | 14.5 | 41.5 | 30 | 10 |

13510

RACCORDO A CROCE

EQUAL CROSS
 KREUZVERSCHRAUBUNG
 RACCORD EN CROIX
 RACOR A CRUZ
 CONEXÃO TIPO CRUZETA TUBO-TUBO

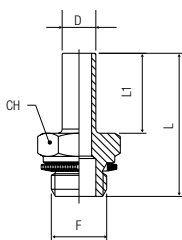


| Code | Tube | L | CH | Pack. |
|--------------|------|------|----|-------|
| 13510 00 001 | 4 | 47 | 8 | 10 |
| 13510 00 002 | 6 | 48 | 9 | 10 |
| 13510 00 003 | 8 | 58 | 11 | 10 |
| 13510 00 004 | 10 | 66 | 13 | 10 |
| 13510 00 005 | 12 | 74.5 | 17 | 10 |
| 13510 00 006 | 14 | 74.5 | 17 | 10 |

13530

ADATTATORE ORIENTABILE MASCHIO CILINDRICO

ORIENTING MALE ADAPTOR PARALLEL
 EINSCHRAUBSTECKVERSCHRAUBUNG ZYLINDRISCH
 ADAPTATEUR D'ORIENTATION CYLINDRIQUE
 ADAPTADOR ORIENTABLE MACHO CILÍNDRICO
 ADAPTADOR ORIENTÁVEL COM ROSCA MACHO PARALELA



| Code | D | F | L | L1 | CH | Pack. |
|--------------|----|-----|------|----|----|-------|
| 13530 00 001 | 6 | 1/8 | 27.5 | 16 | 13 | 10 |
| 13530 00 002 | 6 | 1/4 | 31 | 16 | 17 | 10 |
| 13530 00 003 | 8 | 1/8 | 31.5 | 19 | 13 | 10 |
| 13530 00 004 | 8 | 1/4 | 34 | 19 | 17 | 10 |
| 13530 00 005 | 8 | 3/8 | 38 | 19 | 22 | 10 |
| 13530 00 006 | 10 | 1/4 | 35 | 20 | 17 | 10 |
| 13530 00 007 | 10 | 3/8 | 39 | 20 | 22 | 10 |
| 13530 00 008 | 14 | 3/8 | 40 | 21 | 22 | 10 |
| 13530 00 009 | 14 | 1/2 | 42 | 21 | 27 | 10 |



Temperature

min

- 20 °C

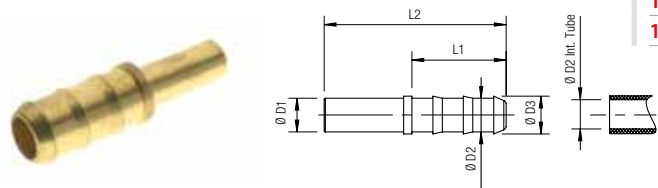
max

+ 80 °C

13540

MANICOTTO PORTAGOMMA PER TUBO CAUCCIÙ

SLEEVE HOSE ADAPTER FOR CAOUTCHOUC TUBES
 SCHLAUCHTÜLLE FÜR GUMMISCHLAUCH
 DOUILLE ANNELÉE POUR TUBE CAOUTCHOUC
 MANGUITO PORTAGOMA PARA TUBO DE CAUCHO
 ESPIGÃO PARA ENGATE DE MANGUEIRAS

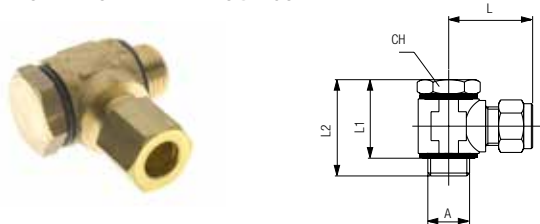


| Code | D1 | D2 | D3 | L1 | L | Pack. |
|-------------------|----|----|------|------|------|-------|
| 13540 00 01 GG 00 | 6 | 7 | 9 | 22.5 | 40.5 | 10 |
| 13540 00 01 GH 00 | 8 | 7 | 9 | 22.5 | 43.5 | 10 |
| 13540 00 01 GP 00 | 8 | 10 | 12 | 22.5 | 43.5 | 10 |
| 13540 00 01 GI 00 | 10 | 7 | 9 | 22.5 | 44.5 | 10 |
| 13540 00 01 FR 00 | 10 | 10 | 12 | 22.5 | 44.5 | 10 |
| 13540 00 01 FS 00 | 12 | 10 | 12 | 22.5 | 45 | 10 |
| 13540 00 01 GM 00 | 12 | 13 | 15.5 | 29.5 | 52 | 10 |
| 13540 00 01 GN 00 | 14 | 13 | 15.5 | 29.5 | 52.5 | 10 |

13550

RACCORDO ORIENTABILE A L CON VITE

SINGLE BANJO BODY WITH STEM
 WINKELSCHWENKVERSCHRAUBUNG (DREHBAR)
 EQUERRE MÂLE BANJO, ORIENTABLE
 RACOR ORIENTABLE A L CON TORNILLO
 CONEXÃO EM "L" ORIENTÁVEL TIPO BANJO



| Code | Tube | A | L | L2 | L1 | CH | Pack. |
|--------------|------|-----|------|----|------|----|-------|
| 13550 00 001 | 4 | 1/8 | 22.5 | 31 | 24.5 | 14 | 10 |
| 13550 00 002 | 6 | 1/8 | 23.5 | 31 | 24.5 | 14 | 10 |
| 13550 00 003 | 6 | 1/4 | 26.5 | 32 | 25 | 17 | 10 |
| 13550 00 004 | 8 | 1/8 | 28.5 | 31 | 24.5 | 14 | 10 |
| 13550 00 005 | 8 | 1/4 | 28.5 | 32 | 25 | 17 | 10 |
| 13550 00 006 | 8 | 3/8 | 30 | 36 | 27.5 | 19 | 10 |
| 13550 00 007 | 10 | 1/4 | 32.5 | 32 | 25 | 17 | 10 |
| 13550 00 008 | 10 | 3/8 | 32.5 | 36 | 27.5 | 19 | 10 |
| 13550 00 009 | 14 | 1/4 | 37 | 44 | 38 | 17 | 10 |
| 13550 00 010 | 14 | 3/8 | 37 | 46 | 38 | 22 | 10 |
| 13550 00 011 | 14 | 1/2 | 37 | 49 | 39.5 | 24 | 10 |
| 13550 00 012 | 22 | 3/4 | 47 | 64 | 55 | 32 | 10 |

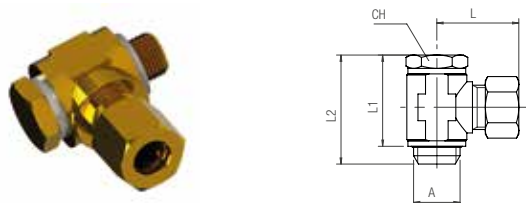
| | min | max |
|-------------|---------|---------|
| Temperature | - 20 °C | + 80 °C |

13550BI

New

RACCORDO ORIENTABILE A L CON VITE E RONDELLE BIMATERIALE (1613)

SINGLE BANJO BODY WITH STEM AND BIMATERIAL WASHER (1613)
 WINKELSCHWENKVERSCHRAUBUNG MIT BIMATERIAL UNTERLAGSSCHEIBE (1613)
 RACCORD BANJO MALE CYLINDRIQUE AVEC JOINT BI MATIÈRE (1613)
 RACOR ORIENTABLE A L CON TORNILLO Y ARANDELA BIMATERIAL (1613)
 CONEXÃO EM "L" ORIENTÁVEL COM PARAFUSOS E ARRUELA BI-MATERIAL (1613)



| Code | Tube | A | L | L2 | L1 | CH1 | Pack. |
|--------------|------|-----|------|----|------|-----|-------|
| 13550 BI 001 | 4 | 1/8 | 22.5 | 31 | 25 | 14 | 10 |
| 13550 BI 002 | 6 | 1/8 | 23.5 | 31 | 25 | 14 | 10 |
| 13550 BI 003 | 6 | 1/4 | 26.5 | 32 | 25.5 | 17 | 10 |
| 13550 BI 004 | 8 | 1/8 | 28.5 | 31 | 25 | 14 | 10 |
| 13550 BI 005 | 8 | 1/4 | 28.5 | 32 | 26.5 | 17 | 10 |
| 13550 BI 006 | 8 | 3/8 | 30 | 36 | 28.5 | 19 | 10 |
| 13550 BI 007 | 10 | 1/4 | 32.5 | 32 | 25.5 | 17 | 10 |
| 13550 BI 008 | 10 | 3/8 | 32.5 | 36 | 28.5 | 19 | 10 |
| 13550 BI 027 | 12 | 1/4 | 37 | 44 | 38.5 | 17 | 10 |
| 13550 BI 028 | 12 | 3/8 | 37 | 46 | 39 | 19 | 10 |
| 13550 BI 009 | 14 | 1/4 | 37 | 44 | 38.5 | 17 | 10 |
| 13550 BI 010 | 14 | 3/8 | 37 | 46 | 39 | 22 | 10 |
| 13550 BI 011 | 14 | 1/2 | 37 | 49 | 41 | 24 | 10 |
| 13550 BI 029 | 15 | 3/8 | 37 | 46 | 39 | 22 | 10 |
| 13550 BI 030 | 15 | 1/2 | 37 | 49 | 41 | 24 | 10 |
| 13550 BI 031 | 16 | 1/2 | 39 | 49 | 41 | 24 | 10 |
| 13550 BI 032 | 18 | 1/2 | 45.5 | 49 | 41 | 24 | 10 |
| 13550 BI 012 | 22 | 3/4 | 47 | 64 | 55 | 32 | 10 |

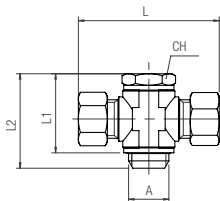
| | min | max |
|-------------|---------|----------|
| Temperature | - 30 °C | + 100 °C |

13570BI

New

RACCORDO ORIENTABILE A T CON VITE E RONDELLE BIMATERIALE (1613)

DOUBLE BANJO BODY WITH STEM AND BIMATERIAL WASHER (1613)
 DOPPELSCHWENKVERSCHRAUBUNG MIT BIMATERIAL UNTERLAGSSCHEIBE (1613)
 RACCORD BANJO DOUBLE MALE CYLINDRIQUE AVEC JOINT BI-MATIÈRE (1613)
 RACOR ORIENTABLE A T CON TORNILLO Y ARANDELA BIMATERIAL (1613)
 CONEXÃO EM "T" ORIENTÁVEL COM PARAFUSOS E ARRUELA BI-MATEIRAL (1613)



| Code | Tube | A | L | L2 | L1 | CH1 | Pack. |
|--------------|------|-----|----|----|------|-----|-------|
| 13570 BI 001 | 4 | 1/8 | 45 | 31 | 25 | 14 | 10 |
| 13570 BI 002 | 6 | 1/8 | 47 | 31 | 25 | 14 | 10 |
| 13570 BI 003 | 6 | 1/4 | 53 | 32 | 25.5 | 17 | 10 |
| 13570 BI 004 | 8 | 1/8 | 57 | 36 | 25 | 14 | 10 |
| 13570 BI 005 | 8 | 1/4 | 57 | 32 | 26.5 | 17 | 10 |
| 13570 BI 006 | 8 | 3/8 | 60 | 36 | 28.5 | 19 | 10 |
| 13570 BI 007 | 10 | 1/4 | 63 | 32 | 25.5 | 17 | 10 |
| 13570 BI 008 | 10 | 3/8 | 65 | 36 | 28.5 | 19 | 10 |
| 13570 BI 027 | 12 | 1/4 | 73 | 44 | 38.5 | 17 | 10 |
| 13570 BI 028 | 12 | 3/8 | 73 | 46 | 39 | 19 | 10 |
| 13570 BI 009 | 14 | 1/4 | 73 | 44 | 38.5 | 17 | 10 |
| 13570 BI 010 | 14 | 3/8 | 73 | 46 | 39 | 22 | 10 |
| 13570 BI 011 | 14 | 1/2 | 73 | 49 | 41 | 24 | 10 |
| 13570 BI 029 | 15 | 3/8 | 73 | 46 | 39 | 22 | 10 |
| 13570 BI 030 | 15 | 1/2 | 73 | 49 | 41 | 24 | 10 |
| 13570 BI 031 | 16 | 1/2 | 78 | 49 | 41 | 24 | 10 |
| 13570 BI 032 | 18 | 1/2 | 91 | 49 | 41 | 24 | 10 |
| 13570 BI 012 | 22 | 3/4 | 93 | 64 | 55 | 32 | 10 |

min max



Temperature

- 30 °C

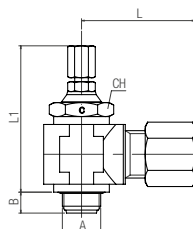
+ 100 °C

13958BI

New

REGOLATORE UNIDIREZIONALE ORIENTABILE PER CILINDRO

ORIENTING FLOW REGULATOR FOR CYLINDER
 DURCHFLOSSREGLER ABLUFTDROSSELUNG (DREHBAR)
 RÉGULEUR DE DÉBIT À L'ÉCHAPPEMENT FILETAGE (ORIENTABLE)
 REGULADOR UNIDIRECCIONAL ORIENTABLE PARA CILINDRO
 REGULADORA UNIDIRECCIONAL ORIENTÁVEL PARA CILINDRO



| Code | Tube | A | L | L1min | L1max | B | CH1 | Pack. |
|--------------|------|-----|------|-------|-------|-----|-----|-------|
| 13958 BI 001 | 8 | 1/8 | 28.5 | 36.5 | 42 | 4.5 | 14 | 10 |
| 13958 BI 002 | 10 | 1/4 | 32.5 | 40 | 45.5 | 6.5 | 17 | 10 |
| 13958 BI 003 | 14 | 3/8 | 36.5 | 50 | 57 | 6.5 | 20 | 10 |
| 13958 BI 004 | 18 | 1/2 | 46 | 54.5 | 62 | 7.5 | 24 | 10 |

Regolatore (8905) + Rondelle bimateriale (1613).
 Regulator (8905) + Bimaterial washer (1613).
 Regler (8905) + Bimaterial unterlagsscheibe (1613).
 Régulateur (8905) + Joint bi matière (1613).
 Regulador (8905) + Arandela bimaterial (1613).
 Reguladora (8905) + Arruela bi-material (1613).

min max



Temperature

- 20 °C

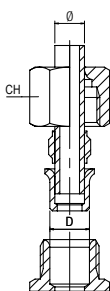
+ 80 °C



Regolazione manuale - Manual regulation - Einstellbar von hand
 À vis extérieur - regulación manual - regulagem manual

13600

RIDUZIONE
 REDUCTION
 REDUZIERUNG
 RÉDUCTION
 REDUCCIÓN
 REDUÇÃO

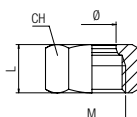


| Code | Tube | D | CH | Pack. |
|--------------|------|----|----|-------|
| 13600 00 001 | 4 | 6 | 13 | 10 |
| 13600 00 002 | 6 | 8 | 14 | 10 |
| 13600 00 003 | 8 | 10 | 19 | 10 |
| 13600 00 004 | 10 | 12 | 22 | 10 |
| 13600 00 005 | 12 | 14 | 24 | 10 |

Questo articolo è comprensivo di tre particolari quali: Dado, Ogiva, Riduzione.
 This article is comprehensive of 3 parts: Nut, Olive, Reduction.
 Dieser Artikel enthält drei wie insbesondere: Mutter, Spinner, Verringerung.
 Cet article comprend trois des détails tels que: Écrous, Spinner, Réduction.
 Este artículo incluye tres partes: Tuerca, Ojiva, Reducción.
 Este artigo inclui três especial, tais como: Nut, Girador, Redução.

13680

DADO
 NUT
 ÜBERWURFMUTTER
 ECROU
 TUERCA
 PORCA

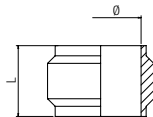


| Code | Tube | L | CH | M | Pack. |
|-------------------|------|------|----|----------|-------|
| 13680 00 01 X1 00 | 4 | 10.5 | 10 | M 8x1 | 50 |
| 13680 00 01 X4 00 | 6 | 10.5 | 13 | M 10x1 | 50 |
| 13680 00 01 X7 00 | 8 | 12.5 | 14 | M 12x1 | 50 |
| 13680 00 01 X9 00 | 10 | 15 | 19 | M 16x1.5 | 50 |
| 13680 00 01 Y1 00 | 12 | 15 | 22 | M 18x1.5 | 50 |
| 13680 00 01 Y3 00 | 14 | 15 | 24 | M 20x1.5 | 20 |
| 13680 00 01 Y4 00 | 15 | 15 | 24 | M 20x1.5 | 20 |
| 13680 00 01 Y5 00 | 16 | 17 | 27 | M 22x1.5 | 20 |
| 13680 00 01 Y7 00 | 18 | 18 | 30 | M 24x1.5 | 20 |
| 13680 00 01 J1 00 | 22 | 19 | 36 | M 30x1.5 | 10 |

13740

OGIVA OTTONE

BRASS OLIVE
KLEMMRING MESSING
OLIVE LAITON
BICONO LATÓN
BUCHA EM LATÃO

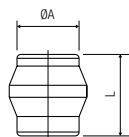


| Code | Tube | L | Pack. |
|-------------------|------|-----|-------|
| 13740 00 01 X1 00 | 4 | 6 | 50 |
| 13740 00 01 X4 00 | 6 | 6.5 | 50 |
| 13740 00 01 X7 00 | 8 | 7 | 50 |
| 13740 00 01 X9 00 | 10 | 8 | 50 |
| 13740 00 01 Y1 00 | 12 | 8.5 | 50 |
| 13740 00 01 Y3 00 | 14 | 8.5 | 20 |
| 13740 00 01 Y4 00 | 15 | 8.5 | 20 |
| 13740 00 01 Y5 00 | 16 | 9 | 20 |
| 13740 00 01 Y7 00 | 18 | 9.5 | 20 |
| 13740 00 01 J1 00 | 22 | 10 | 10 |

13780

TAPPO PER RACCORDI UNIVERSALI

PLUG FOR UNIVERSAL FITTINGS
STOPFEN FÜR DOPPELKEGEL VERSCHRAUBUNGEN
BOUCHON POUR RACCORDS UNIVERSELS
TAPÓN PARA RACORES UNIVERSALES
TAMPÃO PARA CONEXÃO UNIVERSAIS

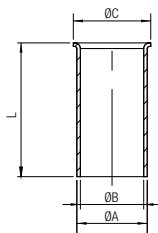


| Code | Tube | L | Pack. |
|-------------------|------|------|-------|
| 13780 00 01 X1 00 | 4 | 10 | 50 |
| 13780 00 01 X4 00 | 6 | 10.5 | 50 |
| 13780 00 01 X7 00 | 8 | 10.5 | 50 |
| 13780 00 01 X9 00 | 10 | 11.5 | 50 |
| 13780 00 01 Y1 00 | 12 | 12 | 50 |
| 13780 00 01 Y3 00 | 14 | 14 | 20 |
| 13780 00 01 Y4 00 | 15 | 14 | 20 |
| 13780 00 01 Y5 00 | 16 | 14 | 20 |
| 13780 00 01 Y7 00 | 18 | 16 | 20 |
| 13780 00 01 J1 00 | 22 | 15 | 20 |

10770

BUSSOLA DI RINFORZO

INTERNAL SUPPORT BUSH
STÜTZHÜLSE MESSING
FOURRURE INTÉRIEURE
REFUERZO
BUCHA DE REFORÇO INTERNA

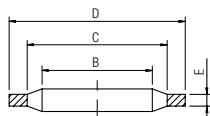


| Code | Tube | A | B | C | L | Pack. |
|-------------------|---------|------|------|------|------|-------|
| 10770 00 01 1D 00 | 4/2.7 | 2.7 | 2.1 | 3.7 | 13 | 10 |
| 10770 00 01 3D 00 | 6/4 | 4 | 3.2 | 5 | 13 | 10 |
| 10770 00 01 4D 00 | 8/6 | 6 | 5 | 7 | 16.5 | 10 |
| 10770 00 01 5D 00 | 10/8 | 8 | 7 | 9 | 17 | 10 |
| 10770 00 01 7D 00 | 12/9 | 9 | 8 | 11 | 19 | 10 |
| 10770 00 01 8D 00 | 12/10 | 10 | 9 | 11 | 19 | 10 |
| 10770 00 01 0E 00 | 14/12 | 12 | 11 | 13.5 | 21 | 10 |
| 10770 00 01 1E 00 | 15/12.5 | 12.5 | 11.6 | 14 | 21 | 10 |
| 10770 00 01 3E 00 | 16/13 | 13 | 12 | 15.5 | 22 | 10 |
| 10770 00 01 7E 00 | 18/15 | 15 | 14 | 17.5 | 23 | 10 |
| 10770 00 01 8E 00 | 18/16 | 16 | 15 | 17.5 | 23 | 10 |
| 10770 00 01 0F 00 | 22/18 | 18 | 17 | 21 | 25 | 10 |

1612

RONDELLA BIMATERIALE IN ACCIAIO E NBR

STEEL AND NBR BIMATERIAL WASHER
VERBUNDDICHTRINGE AUS STAHL UND NBR
RONDELLE-JOINT BI-MATIÈRE (NBR/ACIER)
ARANDELA BIMATERIAL EN ACERO Y NBR
ARRUELA BI-MATERIAL EM AÇO E NBR



| Code | Size | B | C | D | E | Pack. |
|--------------|------|-------|-------|------|------|-------|
| 01612 00 001 | 1/8 | 10.4 | 12 | 14.7 | 1.25 | 20 |
| 01612 00 002 | 1/4 | 13.85 | 15.75 | 18.7 | 1.25 | 20 |
| 01612 00 003 | 3/8 | 17.35 | 19.25 | 22.7 | 1.25 | 20 |
| 01612 00 004 | 1/2 | 21.65 | 23.55 | 26.7 | 1.25 | 20 |
| 01612 00 005 | 3/4 | 27.3 | 29.2 | 32.5 | 1.25 | 20 |
| 01612 00 006 | 1" | 34.2 | 36.1 | 39.5 | 2 | 20 |



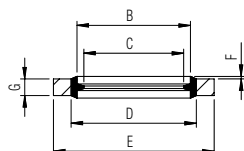
Temperature

min - 30 °C
max + 100 °C

1613

RONDELLA AUTOCENTRANTE BIMATERIALE IN ACCIAIO E NBR

STEEL AND NBR CENTERING BIMATERIAL WASHER
BI-MATERIAL STAHL SCHEIBE UND NBR
RONDELLE JOINT BI-MATIÈRE (NBR/ACIER)
ARANDELA BIMATERIAL EN ACERO Y NBR
ARRUELA BI-MATERIAL EM AÇO E NBR



| Code | Size | B | C | D | E | G | F | Pack. |
|--------------|------|-------|-------|-------|----|-----|-----|-------|
| 01613 00 001 | 1/8 | 10,37 | 8,56 | 11,84 | 14 | 2 | 0,3 | 20 |
| 01613 00 002 | 1/4 | 13,74 | 11,45 | 15,21 | 17 | 2 | 0,3 | 20 |
| 01613 00 003 | 3/8 | 17,28 | 14,96 | 18,75 | 22 | 2 | 0,3 | 20 |
| 01613 00 004 | 1/2 | 21,54 | 18,64 | 23,01 | 26 | 2,5 | 0,4 | 20 |
| 01613 00 005 | 3/4 | 27,05 | 24,13 | 28,53 | 32 | 2,5 | 0,4 | 20 |
| 01613 00 006 | 1" | 33,89 | 30,30 | 36,88 | 41 | 3,2 | 0,5 | 20 |



Temperature

min - 30 °C
max + 100 °C

RACCORDO PORTAGOMMA PER TUBO AUTOBLOCCANTE

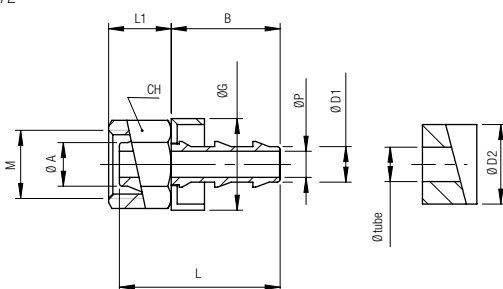
HOSE ADAPTER FOR LOCKING HOSE SELF
 EINSCHRAUBTÜLLE FÜR STECKSCHLÄUCHE
 DOUILLES ANNEÉES RAPIDES POUR TUYAUX AUTO-SERRANTS
 RACORDAJE PORTAGOMA PARA TUBO AUTOBLOCANTE
 CONEXÃO ESPIGAO PARA TUBO AUTOBLOCANTE

13800

RACCORDO PORTAGOMMA FEMMINA PER TUBO AUTOBLOCCANTE

FEMALE HOSE ADAPTER FOR LOCKING HOSE SELF
 SCHNELLSTECKTÜLLE FÜR UNIVERSAL VERSCHSCHRAUBUNG
 ÉCROU R.U. AVEC DOUILLE ANNEÉE POUR TUYAUX AUTO-SERRANTS
 RACORDAJE PORTAGOMA HEMBRA PARA TUBO AUTOBLOCANTE
 CONEXÃO ESPIGAO FÊMEA PARA TUBO AUTOBLOCANTE

Montaggio
 Assembling
 Montageanleitung
 Assemblage
 Montaje
 Montagem



| Code | Tube | M | Ø A | Ø D1 | Ø D2 | CH | Ø G | L | B | L1 | Ø P | Pack. |
|--------------|------|---------|-----|------|------|----|------|------|------|------|------|-------|
| 13800 00 001 | 1/4 | M10x1 | 6 | 6.5 | 13 | 12 | 16.7 | 32.5 | 20 | 11.5 | 4.8 | 10 |
| 13800 00 002 | 1/4 | M12X1 | 8 | 6.5 | 13 | 14 | 16.7 | 29.5 | 20 | 12.5 | 4.8 | 10 |
| 13800 00 003 | 1/4 | M16x1.5 | 10 | 6.5 | 13 | 19 | 16.7 | 30.5 | 24 | 14 | 4.8 | 10 |
| 13800 00 004 | 3/8 | M16x1.5 | 10 | 9.5 | 16 | 19 | 19.5 | 34.5 | 24 | 14 | 7.5 | 10 |
| 13800 00 005 | 3/8 | M20x1.5 | 14 | 9.5 | 16 | 24 | 19.5 | 36 | 28 | 15 | 7.5 | 10 |
| 13800 00 006 | 1/2 | M20x1.5 | 14 | 12.7 | 19 | 24 | 23.5 | 40 | 28 | 15 | 10 | 10 |
| 13800 00 007 | 1/2 | M24x1.5 | 18 | 12.7 | 19 | 30 | 23.5 | 40.5 | 36.5 | 17 | 10 | 10 |
| 13800 00 008 | 5/8 | M24x1.5 | 18 | 15.7 | 23 | 30 | 27.3 | 49 | 36.5 | 17 | 13.5 | 10 |
| 13800 00 009 | 3/4 | M30x1.5 | 22 | 18.8 | 27 | 36 | 30.8 | 57.5 | 43 | 17 | 16 | 10 |



IT

Su ogni articolo della serie 13000 è possibile sostituire dado e ogiva con 13800. Vedi "Ø A" come riferimento.

GB

For each item of the 13000 serie, you can remove the nut and the olive and connect with the art. 13800. See "Ø A" for nut size.

DE

Auf jedes Artikel der Serie 13000 kann man die Überwurfmutter und Klemmring mit dem Artikel 13800 ersetzen. Für die Auswahl Siehe "Ø A" Rohrdurchmesser.

FR

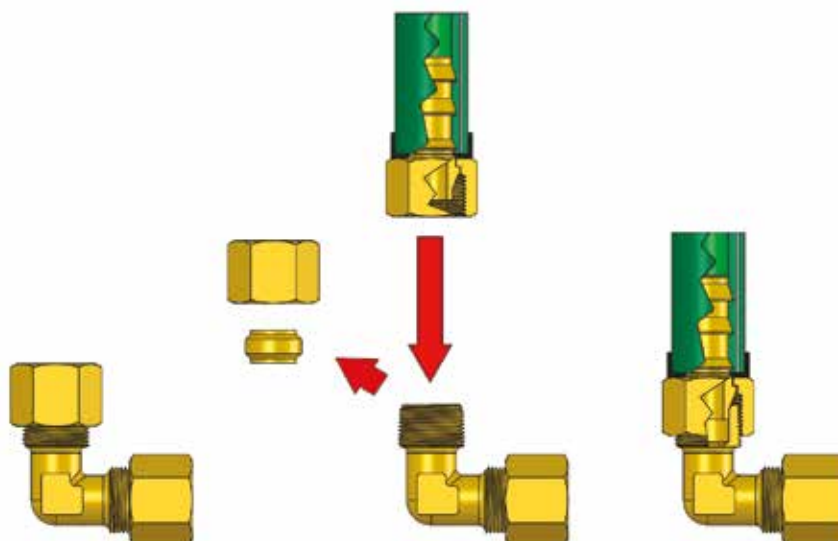
Pour chaque article de la série 13000, possibilité de substituer l'écrouet l'ogive avec le code 13800. Se reporter au "Ø A" pour diamètre écrou.

ES

Para cada artículo de la serie 13000 es posible de sustituir la tuerca y el bicono con 13800. Ver "Ø A" como referencia.

PT

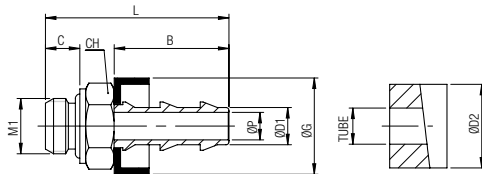
Para cada item da série 13000 é possível fazer a substituição da porca e da anilha pelo item 13800. Veja "Ø A" para referência.



13810

RACCORDO PORTAGOMMA MASCHIO PER TUBO AUTOBLOCCANTE

MALE HOSE ADAPTER FOR LOCKING HOSE SELF
 SCHNELLSTECKTÜLLE MIT AUSSENGEWINDE
 DOUILLE ANNELEE RAPIDE POUR TUYAUX AUTO-SERRANTS
 RACORDAJE PORTAGOMA MACHO PARA TUBO AUTOBLOCANTE
 CONEXÃO ESPIGÃO MACHO PARA TUBO AUTOBLOCANTE



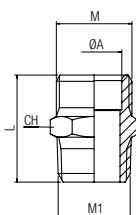
Montaggio
 Assembling
 Montageanleitung
 Assemblage
 Montaje
 Montagem

| Code | Tube | M1 | Ø D1 | Ø D2 | CH | Ø G | L | B | C | Ø P | Pack. |
|--------------|------|-----|------|------|----|------|------|------|----|------|-------|
| 13810 00 001 | 1/4 | 1/8 | 6.5 | 13 | 13 | 16.7 | 32 | 20 | 6 | 4.8 | 10 |
| 13810 00 002 | 1/4 | 1/4 | 6.5 | 13 | 17 | 16.7 | 35.5 | 20 | 8 | 4.8 | 10 |
| 13810 00 003 | 3/8 | 1/4 | 9.5 | 16 | 17 | 19.5 | 39.5 | 24 | 8 | 7.5 | 10 |
| 13810 00 004 | 3/8 | 3/8 | 9.5 | 16 | 22 | 19.5 | 41 | 24 | 9 | 7.5 | 10 |
| 13810 00 005 | 1/2 | 3/8 | 12.7 | 19 | 22 | 23.5 | 45 | 28 | 9 | 10 | 10 |
| 13810 00 006 | 1/2 | 1/2 | 12.7 | 19 | 27 | 23.5 | 47 | 28 | 10 | 10 | 10 |
| 13810 00 007 | 5/8 | 1/2 | 15.7 | 23 | 27 | 27.3 | 55 | 36.5 | 10 | 13.5 | 10 |
| 13810 00 008 | 5/8 | 3/4 | 15.7 | 23 | 32 | 27.3 | 58.5 | 36.5 | 12 | 13.5 | 10 |
| 13810 00 009 | 3/4 | 3/4 | 18.8 | 27 | 32 | 30.8 | 65 | 43 | 12 | 16 | 10 |

13820

NIPPLO

NIPPLE
 DOPPELNIPPEL
 MAMELON
 MACHÓN
 NIPLE



Montaggio
 Assembling
 Montageanleitung
 Assemblage
 Montaje
 Montagem

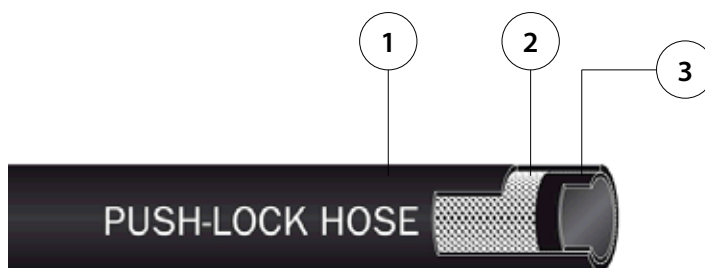
| Code | M | M1 | Ø A | L | CH | Pack. |
|--------------|---------|-----|-----|------|----|-------|
| 13820 00 001 | M10x1 | 1/8 | 6 | 20 | 11 | 10 |
| 13820 00 002 | M10x1 | 1/4 | 6 | 23,5 | 14 | 10 |
| 13820 00 003 | M10x1 | 3/8 | 6 | 24 | 17 | 10 |
| 13820 00 004 | M12x1 | 1/8 | 8 | 20,5 | 13 | 10 |
| 13820 00 005 | M12x1 | 1/4 | 8 | 24 | 14 | 10 |
| 13820 00 006 | M12x1 | 3/8 | 8 | 24,5 | 17 | 10 |
| 13820 00 007 | M16x1,5 | 1/4 | 10 | 26 | 16 | 10 |
| 13820 00 008 | M16x1,5 | 3/8 | 10 | 26,5 | 17 | 10 |
| 13820 00 009 | M16x1,5 | 1/2 | 10 | 28 | 21 | 10 |
| 13820 00 010 | M20x1,5 | 3/8 | 14 | 26,5 | 20 | 10 |
| 13820 00 011 | M20x1,5 | 1/2 | 14 | 29 | 21 | 10 |
| 13820 00 012 | M24x1,5 | 1/2 | 18 | 31 | 24 | 10 |
| 13820 00 013 | M24x1,5 | 3/4 | 18 | 32,5 | 27 | 10 |
| 13820 00 014 | M30x1,5 | 3/4 | 22 | 33,5 | 30 | 10 |
| 13820 00 015 | M30x1,5 | 1/2 | 22 | 32 | 30 | 10 |

TUBO AUTOBLOCCANTE

PUSH-LOCK HOSE
SCHNELLSTECKSCHLÄUCHE
TUYAUX AUTO-SERRANTS
TUBERÍA AUTOBLOCANTE
TUBO PUSH-LOCK



CARATTERISTICHE TECNICHE
TECHNICAL CHARACTERISTICS
TECHNISCHE ANGABEN
CARACTÉRISTIQUES TECHNIQUES
CARACTERÍSTICAS TÉCNICAS
CARACTERÍSTICAS TÉCNICAS



| Materiali | IT | Materials | GB | Materialien | DE |
|--|----|--|----|--|----|
| 1 Sottostrato: NBR/ACCIAIO liscio resistente agli oli. | | 1 Sublayer: NBR/STEEL smooth, oil resistant. | | 1 Innenrohr: NBR/STAHL glatt, Öl. | |
| 2 Armatura: Tela Tessile. | | 2 Armor: Cloth Textiles. | | 2 Gewebeeinlage: Synthetische Textilfasern. | |
| 3 Rivestimento: NBR/ACCIAIO liscio resistente alle abrasioni, agli oli e agli agenti atmosferici. | | 3 Finish: NBR/STEEL smooth, abrasion, oil and weather resistant. | | 3 Aussenschicht: NBR/STAHL glatt, Abriebfest, Öl- und Witterungsbeständig. | |
| Matériaux | FR | Materiales | ES | Materiais | PT |
| 1 Tube: NBR/ACIER lisse, résistant aux huiles. | | 1 Tubo interior: NBR/ACERO liso resistente a los aceites. | | 1 Tubo interior: NBR/AÇO suave resistente a óleos. | |
| 2 Armature: Fibres textiles. | | 2 Armadura: Trenza Textil | | 2 Armadura: Trançado Têxtil | |
| 3 Revêtement extérieur: NBR/ACIER lisse, résistant à l'abrasion, aux huiles et aux intempéries. | | 3 Tubo exterior: NBR/ACERO liso resistente a la abrasión, a los aceites y a los agentes atmosféricos. | | 3 Tubo exterior: NBR/AÇO suave resistência a abrasão, a óleos, a agentes atmosférico. | |

COLORI STANDARD
STANDARD COLORS
STANDARD FARBEN
COULEURS STANDARDS
CORES PADRÃO

| | | |
|--|-----------|---|
| | RO | ROSSO RED ROT ROUGE ROJO VERMELHO |
| | BL | AZZURRO LIGHT BLUE HELLBLAU BLEU CLAIR AZUL AZUL CLARO |
| | VE | VERDE GREEN GRÜN VERT VERDE VERDE |
| | NE | NERO BLACK SCHWARZ NOIR NEGRO PRETO |



| | | |
|--|--------------|--|
| Temperatura con aria compressa Temperature with compressed air Mit Druckluft Avec de l'air comprimé Con aire comprimido Com ar comprimido | -20°C | +110°C con picchi di 125°C peak +125°C Kurzfristig +125°C Pic à +125°C con picos de +125 °C com picos de + 125 °C |
| Temperatura con acqua Temperature with water Mit Wasser Avec de l'eau Con Agua Com Água | 0°C | +100°C con picchi di 110°C peak +110°C Kurzfristig +110°C Pic à +110°C con picos de +110 °C com picos de + 110 °C |
| Temperatura con olio idraulico Temperature with hydraulic oil Mit Hydrauliköl Avec de l'huile hydraulique Con aceites hidráulicos Com óleos hidráulicos | -20°C | +70°C con picchi di 90°C peak +90°C Kurzfristig +90°C Pic à +90°C con picos de +90 °C com picos de + 90 °C |
| Temperatura con Acqua Glicole Temperature with Water Glycol Mit Glykolwasser Avec de l'eau glycolé Con Agua Glicol Com Água e Glicol | -20°C | +70°C con picchi di 90°C peak +90°C Kurzfristig +90°C Pic à +90°C con picos de +90 °C com picos de + 90 °C |



Pressioni

Pressures

Druckbereich

Pressions

Presiones

Pressões

16 bar (1.6 MPa)



Fluidi compatibili

Aria compressa / Acqua / Olio Idraulico / Acqua Glicole / Gasolio / Benzina

Fluids

Compressed air / Water / Hydraulic Oil / Water Glycol / Diesel Fuel / Petrol

Geeignete Medien

Druckluft / Wasser / Hydrauliköl / Glykolwasser / Dieselkraftstoff / Benzin

Fluides compatibles

Air comprimé / Eau / Huile Hydraulique / Eau glycolé / Carburant diesel / Essence

Fluidos compatibles

Aire comprimido / Agua / Aceite hidráulico / Agua Glicol / Combustible Diesel / Gasolina

Fluidos compatíveis

Ar comprimido / Água / Óleo hidráulico / Água e Glicol / Combustível Diesel / Gasolina

TBPL

TUBO AUTOBLOCCANTE

PUSH-LOCK HOSE

SCHNELLSTECKSCHLÄUCHE

TUYAUX AUTO-SERRANTS

TUBERÍA AUTOBLOCANTE

TUBO PUSH-LOCK



| Code | Code | Code | Code | Int. | Int. | Est. | Raggio di curvatura Bending Radius Biegeradius Rayon de Courbure Radio Curvatura Raio de Curvatura | Pressione d'esercizio | Pressione di scoppio | Pack. |
|-------------------|-------------------|-------------------|-------------------|------|------|------|---|---|--|-------|
| | | | | | | | | Working Pressure Betriebsdruck Pression de Travail Presión de Ejercicio Pressão de Trabalho | Burst Pressure Berstdruck Pression d'Éclatement Presión de Rotura Pressão de Ruptura | |
| | | | | | | | | a/at 23°C | a/at 23°C | |
| | | | | inch | mm | mm | mm | bar | bar | Mt |
| TBPL 1/4 0 RO 100 | TBPL 1/4 0 BL 100 | TBPL 1/4 0 VE 100 | TBPL 1/4 0 NE 100 | 1/4 | 6.3 | 12.4 | 45 | 16 | 64 | 100 |
| TBPL 3/8 0 RO 100 | TBPL 3/8 0 BL 100 | TBPL 3/8 0 VE 100 | TBPL 3/8 0 NE 100 | 3/8 | 9.6 | 15.5 | 75 | 16 | 64 | 100 |
| TBPL 1/2 0 RO 100 | TBPL 1/2 0 BL 100 | TBPL 1/2 0 VE 100 | TBPL 1/2 0 NE 100 | 1/2 | 12.7 | 18.7 | 90 | 16 | 64 | 100 |
| TBPL 5/8 0 RO 080 | TBPL 5/8 0 BL 080 | TBPL 5/8 0 VE 080 | TBPL 5/8 0 NE 080 | 5/8 | 16 | 22.9 | 115 | 16 | 64 | 80 |
| TBPL 3/4 0 RO 080 | TBPL 3/4 0 BL 080 | TBPL 3/4 0 VE 080 | TBPL 3/4 0 NE 080 | 3/4 | 19.2 | 26.5 | 135 | 16 | 64 | 80 |