

Cylinder Kits

Ordering Code Example: XNC-63



Ordering Code

XNC

—

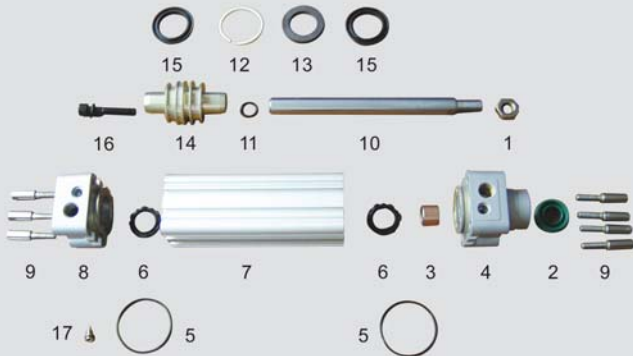
63

Model
XNC: ISO6431 VDMA24562(ISO15552)

Bore Size
32:32mm
40:40mm
50:50mm
63:63mm
80:80mm
100:100mm
125:125mm

Complete cylinder kits include front end cap, rear end cap, piston all seals, all screws, magnetic ring, PTFE-ring and ect.

Illustration



Part No.			
1	Nut	10	Piston rod
2	Gasket	11	O-ring seal
3	Bearing	12	PFTE-ring
4	Front end cap	13	Magnet ring
5	O-ring seal	14	Piston
6	Seal	15	Y-type seal
7	Tube	16	Screw
8	Rear end cap	17	Buffer adjustable screw
9	Screw		

Cylinder Kits

Ordering Code Example: SI-63



Ordering Code

SI

—

63

Model
SI: ISO6431

Bore Size
32:32mm
40:40mm
50:50mm
63:63mm
80:80mm
100:100mm
125:125mm
160:160mm
200:200mm

Cylinder Kits

Ordering Code Example: XNU-20



Ordering Code

XNU

—

25

Model
XNU: ISO6432

Bore Size
8:8mm
10:10mm
12:12mm
16:16mm
20:20mm
25:25mm

Complete cylinder kits include front end cap, rear end cap, piston all seals, all screws, magnetic ring and ect.

XNU系列ISO6432标准气缸

XNU Series ISO6432 Standard Cylinder

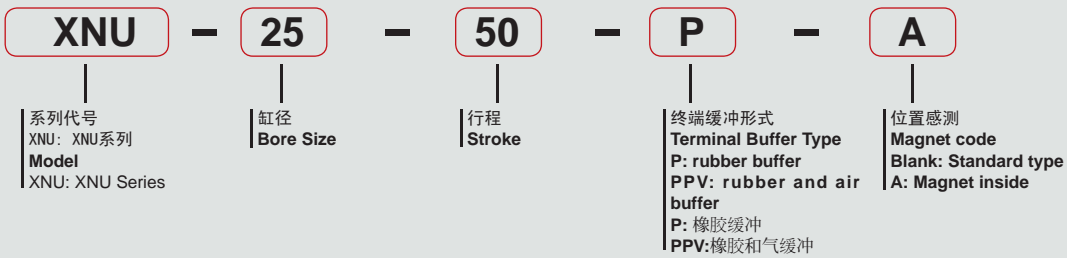


特征 | Character

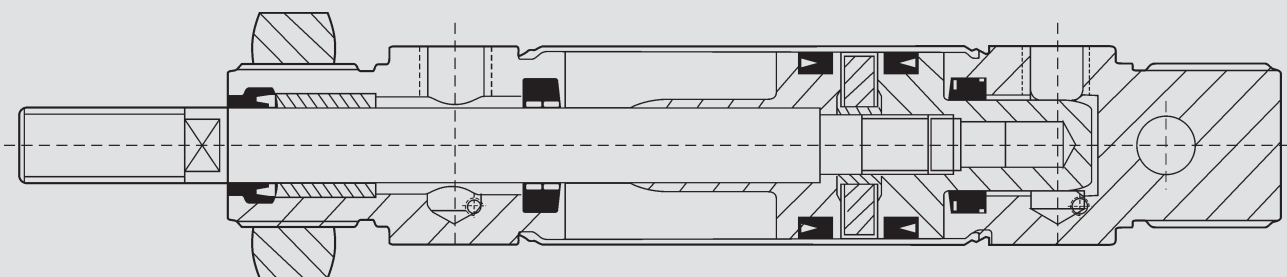
非接触感测

符合ISO 6432标准, 缸径 $\phi 8 \sim \phi 25\text{mm}$

订购码 | Ordering Code

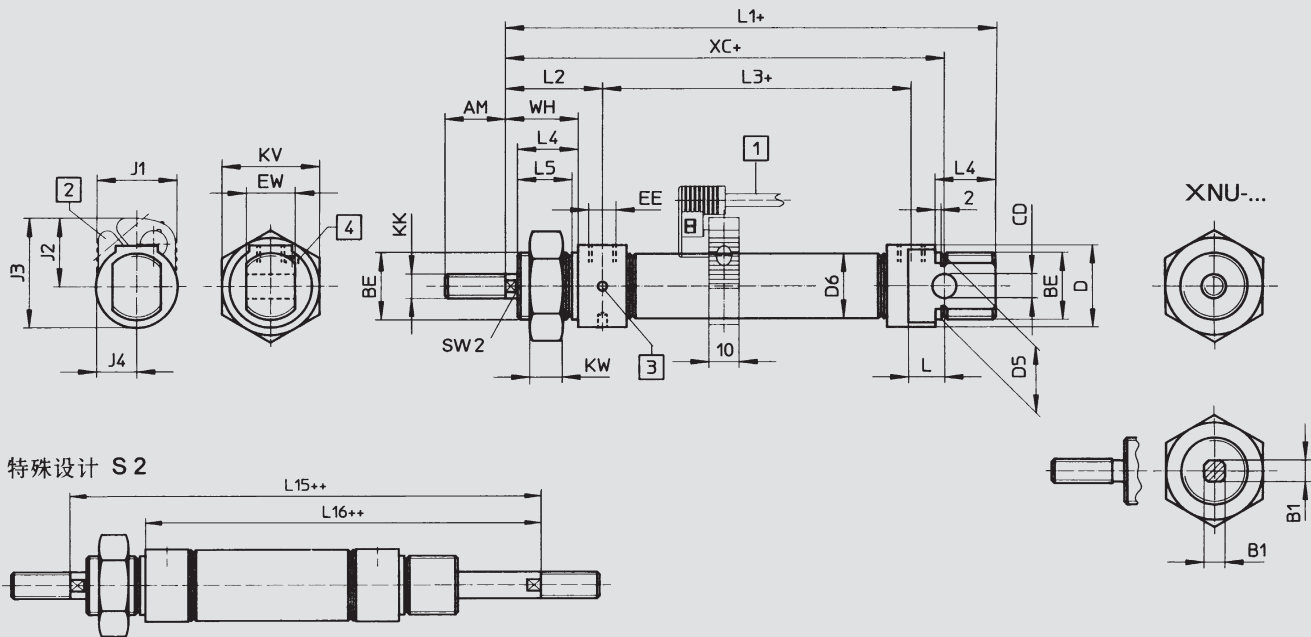


结构图 | Structure Drawing



XNU系列ISO6432标准气缸 XNU Series ISO6432 Standard Cylinder

外形尺寸 | Overall Dimension



- 1 行程开关, 型号: SMEO/SMTO-4U...
2 安装附件, 型号: SMBR-...
3 钩形板手定位孔
4 XNU-...-PPV-A型气缸终端缓冲调节螺钉

+ 表示加行程
++ 表示加两倍行程

尺寸表 | Dimension Sheet

缸径/符号 Bore / Symbol	AM	B1 f8	BE	φ CD	φ D h9	φ D5	φ D6	EE	EW	J1	J2	J3	J4
8	12	-	M12×1.25	4	15	12	9.3	M5	8	20.4	16.5	23.2	13.9
10	12	-	M12×1.25	4	15	12	11.3	M5	8	22	18.2	25.9	13.8
12	16	5.5	M16×1.5	6	20	16	13.3	M5	12	22	20	28.6	11
16	16	5.5	M16×1.5	6	20	16	17.3	M5	12	22.5	22.5	33.2	11
20	20	7	M22×1.5	8	27	22	21.3	G1/8	16	26.5	22.5	35.3	13
25	22	9	M22×1.5	8	27	22	26.5	G1/8	16	31.5	25	40.2	16

缸径/符号 Bore / Symbol	KK	KV	KW	L	L1	L2	L3	L4	L5	L15	L16	SW2	WH	XC
8	M4	19	6	6	78	22	34	12	10	78	62	-	16	64
10	M4	19	6	6	78	22	34	12	10	78	62	-	16	64
12	M6	24	8	9	89	28	38	17	15	94	72	5	22	75
16	M6	24	8	9	95	28	44	17	15	100	78	5	22	82
20	M8	32	11	12	112	32	51.6	20	18	116	92	7	24	95
25	M10×1.25	32	11	12	119.5	36	53.1	22	20	125.5	97.5	9	28	104

XNU系列ISO6432标准气缸

XNU Series ISO6432 Standard Cylinder



L



U



F



N

订购码 | Ordering Code

XNU

Model
XNU

-

50

缸径
Bore Size

X

F

附件代号
Mounting code

MA 不锈钢迷你缸 MA Stainless Steel Mini Cylinder



订购码 | Ordering Code

MA	-	CA	50	X	50	-	25	-	S	-	LB
型号 MA: 复动型 MSA: 单动型 MAD: 双轴复动型 MAJ: 双轴可调型 Model MA: Double Action MSA: Single Action MAD: Double-shaft Double Action MAJ: Double-shaft and adjustable stroke type		后盖型式 CA: 摆尾型 CM: 圆尾型 U: 平尾型 Back Cover Type CA: Fishtail type CM: Rounded type U: Horizontal type	缸径 Bore Size		行程 Stroke		MAJ可调行程 MAJ adjustable stroke type		磁石代号 S: 附磁石 空白: 不附磁石 Magnet Code S: Magnet inside Blank: Standard		固定型式 空白: 基本型 LB: 前后固定型 FA: 前盖固定型 SDB: 后盖摇摆式 Fixed Type Blank: basic type LB: axial foot FA: front flange SDB: back cover swinging type

规格 | Specification

内径 Bore (mm)	16	20	25	32	40
动作形式 Motion Pattern	复动型或单动型 Double Action or Single Action				
工作介质 Working Medium	空气 Air				
固定型式 Fixed Type	基本型 Basic type FA型 type LB型 type SDB型 type				
使用压力范围 Operating Voltage Range	1.0~9.0 Kg/cm ²				
保证耐压力 Ensured Pressure Resistance	13.5 Kg/cm ²				
使用温度范围 Operating Temperature Range	0~70℃				
使用速度范围 Operating Speed Range	50~800 mm/s				
缓冲型式 Buffer Type	缓冲垫片 Buffer Spacer				
接管口径 Joint Pipe Bore	M5×0.8	G1/8"			

MA 不锈钢迷你缸

MA Stainless Steel Mini Cylinder

行程 | Stroke

内径 Bore (mm)	标准行程 Standard Stroke													最大行程 Max. Stroke	容许行程 Permissible Stroke						
16	25	50	75	80	100	125	150	160	175	200				300	500						
20	25	50	75	80	100	125	150	160	175	200	250	300				500	650				
25	25	50	75	80	100	125	150	160	175	200	250	300	350	400	450	500				500	650
32	25	50	75	80	100	125	150	160	175	200	250	300	350	400	450	500				500	650
40	25	50	75	80	100	125	150	160	175	200	250	300	350	400	450	500				500	650

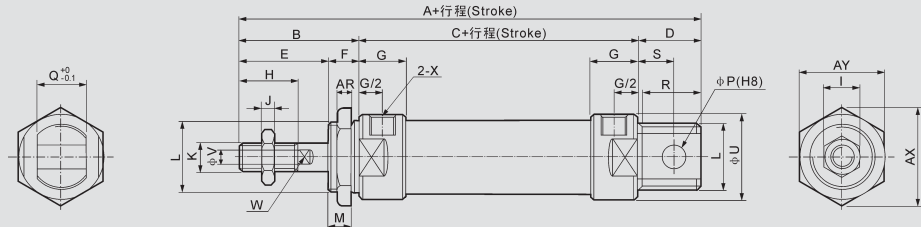
气缸理论出力表 | Cylinder theory output sheet

气缸内径 Cylinder Inside Diameter	16			20			25			32			40			
活塞杆外径 External Diameter of Piston Rod	6			8			10			12			16			
动作型式 Motion Pattern	伸出 Single-action	复动型 Double Action		伸出 Single-action	复动型 Double Action		伸出 Single-action	复动型 Double Action		伸出 Single-action	复动型 Double Action		伸出 Single-action	复动型 Double Action		
		伸侧 Extrusion Side	拉侧 Pull Side		伸侧 Extrusion Side	拉侧 Pull Side		伸侧 Extrusion Side	拉侧 Pull Side		伸侧 Extrusion Side	拉侧 Pull Side		伸侧 Extrusion Side	拉侧 Pull Side	
受压面积 (cm ²) Compression Area	2.01	2.01	1.81	3.14	3.14	2.64	4.90	4.90	4.12	8.04	8.04	6.90	12.56	12.56	10.55	
空气压力 Air Pressure (Kgf/cm ²)	1	-	2.01	1.81	-	3.14	2.64	-	4.90	4.12	-	8.04	6.90	-	12.56	10.55
	2	-	4.02	3.62	1.57	6.28	5.28	2.45	9.80	8.24	4.02	16.08	13.80	6.28	25.12	21.10
	3	2.01	6.03	5.43	4.71	9.42	7.92	7.35	14.70	12.36	12.06	24.12	20.70	18.84	37.68	31.65
	4	4.02	8.04	7.24	7.85	12.56	10.56	12.25	19.60	16.48	20.10	32.16	27.60	31.40	50.24	42.20
	5	6.03	10.05	9.05	10.99	15.70	13.20	17.15	24.50	20.60	28.14	40.20	34.50	43.96	62.80	52.75
	6	8.04	12.06	10.86	14.13	18.84	25.84	22.05	29.40	24.72	36.18	48.24	41.40	56.52	75.36	63.30
	7	10.04	14.07	12.67	17.27	21.98	18.48	26.95	34.30	28.84	44.22	56.28	48.30	69.08	87.92	73.85
	8	-	-	-	20.41	25.12	21.12	31.85	39.20	32.96	52.26	64.32	55.20	81.64	100.48	84.40
	9	-	-	-	23.55	28.26	23.76	36.75	44.10	37.08	60.30	72.36	62.10	94.20	113.04	94.95

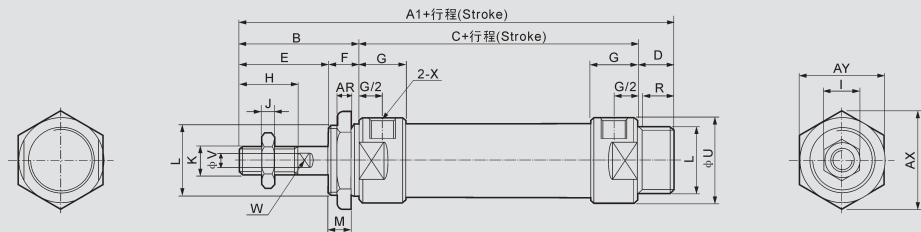
MA 不锈钢迷你缸 MA Stainless Steel Mini Cylinder

外形尺寸 | Overall Dimension

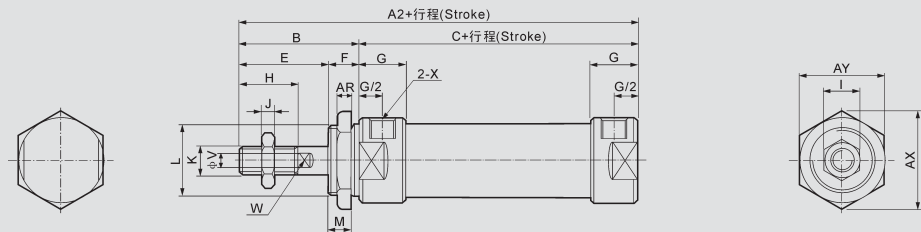
MA-CA



MA-CM



MA-U



尺寸表 | Dimension Sheet

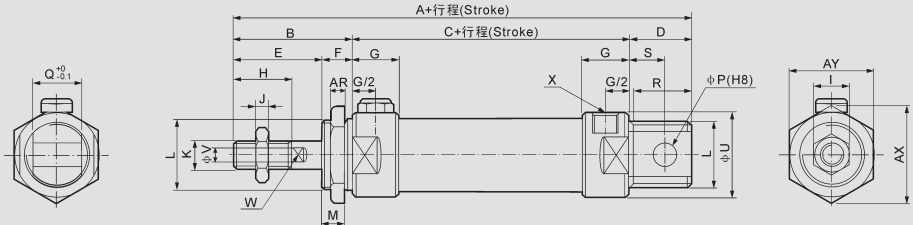
内径 / 符号 Inside Diameter/Symbol	A	A1	A2	B	C	D	D1	E	F	G	H	I	J	K	
16	114	114	98	38	60	15	15	22	16	10	16	10	5	M6×1	
20	137	128	116	40	76	21	12	28	12	16	20	12	6	M8×1.25	
25	141	134	120	44	76	21	14	30	14	16	22	17	6	M10×1.25	
32	147	134	120	44	76	27	14	30	14	16	22	17	6	M10×1.25	
40	149	136	122	46	76	27	14	32	14	16.7	24	17	7	M12×1.25	
内径 / 符号 Inside Diameter/Symbol	L		M	P	Q	R	R1	S	U	V	W	X	AR	AX	AY
16	M16×1.5		14	6	12	14	14	9	21	6	5	M5	6	24	27.5
20	M22×1.5		10	8	16	19	12	12	27	8	6	G1/8	7	33	29
25	M22×1.5		12	8	16	19	14	12	30	10	8	G1/8	7	33	29
32	M24×2.0		12	10	16	25	14	15	35	12	10	G1/8	8	37	32
40	M30×2.0		12	12	20	25	14	15	41.6	16	14	G1/8	9	47	41

MA 不锈钢迷你缸

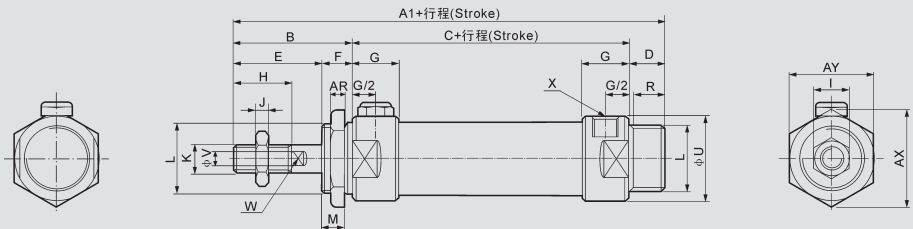
MA Stainless Steel Mini Cylinder

外形尺寸 | Overall Dimension

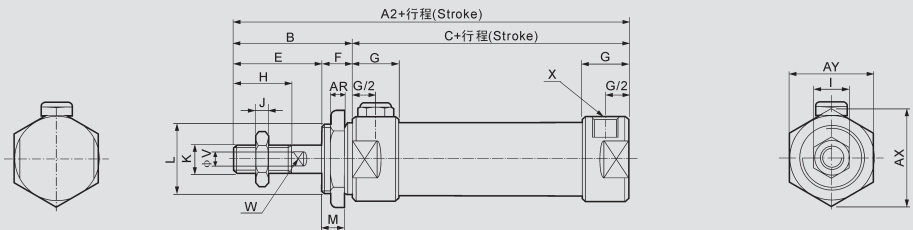
MSA-CA



MSA-CM



MSA-U

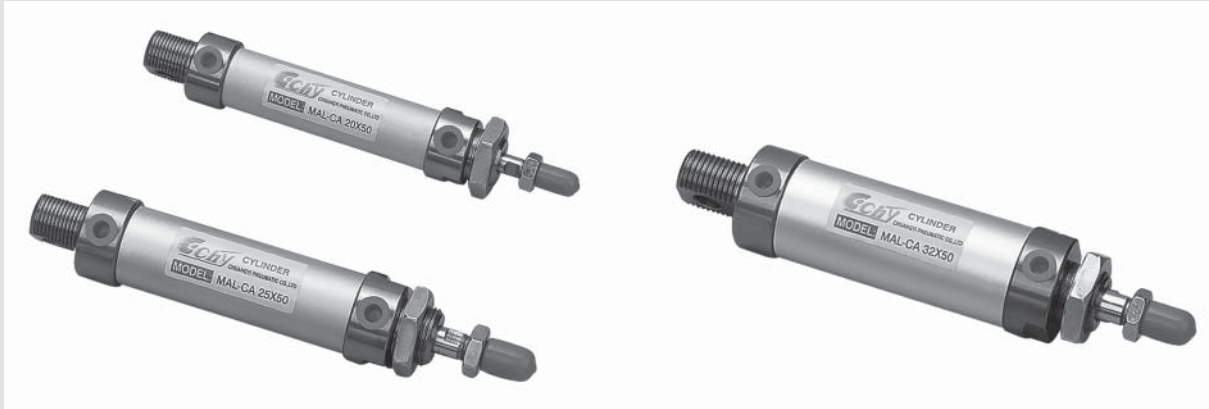


尺寸表 | Dimension Sheet

符号 Symbol	A		A1		A2		B	C		D	D1	E	F	G	H	I	J
	0-50	51-100	0-50	51-100	0-50	51-100		0-50	51-100								
内径/行程 Bore / Stroke																	
20	137	162	128	153	116	141	40	76	101	21	12	28	12	16	20	12	6
25	141	166	134	159	120	145	44	76	101	21	14	30	14	16	22	17	6
32	147	172	134	159	120	145	44	76	101	27	14	30	14	16	22	17	6
40	149	174	136	161	122	147	46	76	101	27	14	32	14	22	24	17	7
内径 / 符号 Inside Diameter/Symbol	K		L		M	P	Q	R	R1	S	U	V	W	X	AR	AX	AY
20	M8×1.25		M22×1.5		10	8	16	19	12	12	27	8	6	G1/8	7	33	29
25	M10×1.25		M22×1.5		12	8	16	19	14	12	30	10	8	G1/8	7	33	29
32	M10×1.25		M24×2.0		12	10	16	25	14	15	35	12	10	G1/8	8	37	32
40	M12×1.25		M30×2.0		12	12	20	25	14	15	41.6	16	14	G1/8	9	47	41

MAL 铝合金迷你缸

MAL Aluminum alloy Mini Cylinder



订购码 | Ordering Code

MAL	-	CA	-	50	X	50	-	25	-	S	-	LB
型号 MAL: 复动型 MSAL: 单动型 MALD: 双轴复动型 MALJ: 双轴可调型 Model MAL: Double Action MSAL: Single Action MALD: Double-shaft Double Action MALJ: Double-shaft and adjustable stroke type		后盖型式 CA: 摆尾型 CM: 圆尾型 U: 平尾型 Back Cover Type CA: Fishtail type CM: Rounded type U: Horizontal type		缸径 Bore Size		行程 Stroke		MALJ可调行程 MALJ adjustable stroke type		磁石代号 S: 附磁石 空白: 不附磁石 Magnet Code S: Magnet inside Blank: Standard		固定型式 空白: 基本型 LB: 前后固定型 FA: 前盖固定型 SDB: 后盖摇摆式 Fixed Type Blank: basic type LB: axial foot FA: front flange SDB: back cover swinging type

规格 | Specification

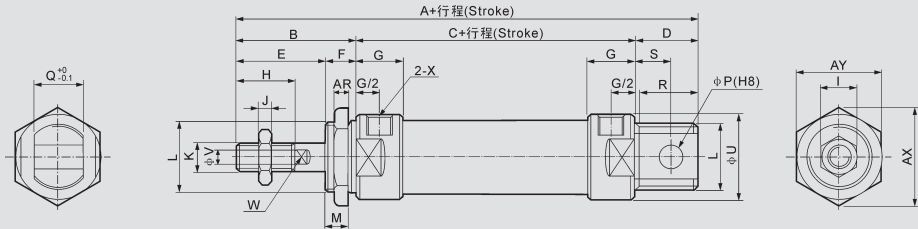
内径 Bore (mm)	16	20	25	32	40
动作形式 Motion Pattern	复动型或单动型 Double Action or Single Action				
工作介质 Working Medium	空气 Air				
固定型式 Fixed Type	基本型 Basic type FA型 type LB型 type SDB型 type				
使用压力范围 Operating Voltage Range	1.0~9.0 Kg/cm ²				
保证耐压力 Ensured Pressure Resistance	13.5 Kg/cm ²				
使用温度范围 Operating Temperature Range	0~70℃				
使用速度范围 Operating Speed Range	50~800 mm/s				
缓冲型式 Buffer Type	缓冲垫片 Buffer Spacer				
接管口径 Joint Pipe Bore	M5×0.8		G1/8"		

MAL 铝合金迷你缸

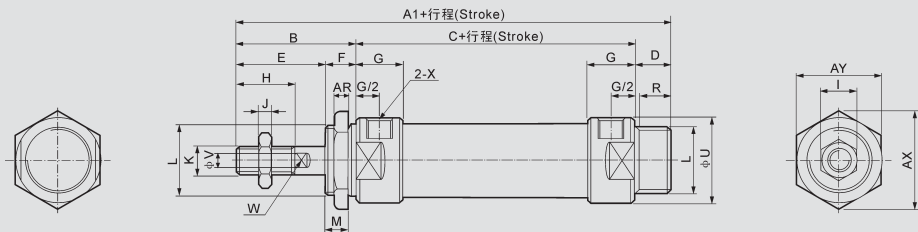
MAL Aluminum alloy Mini Cylinder

外形尺寸 | Overall Dimension

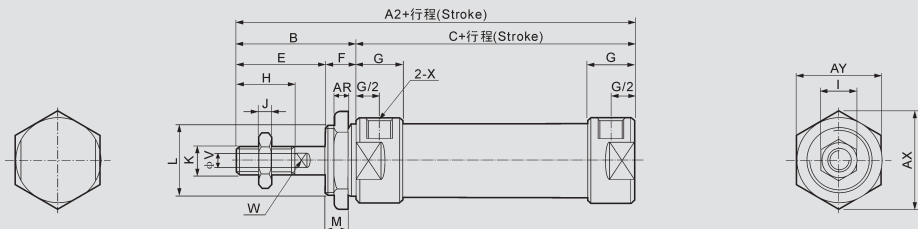
MAL-CA



MAL-CM



MAL-U



尺寸表 | Dimension Sheet

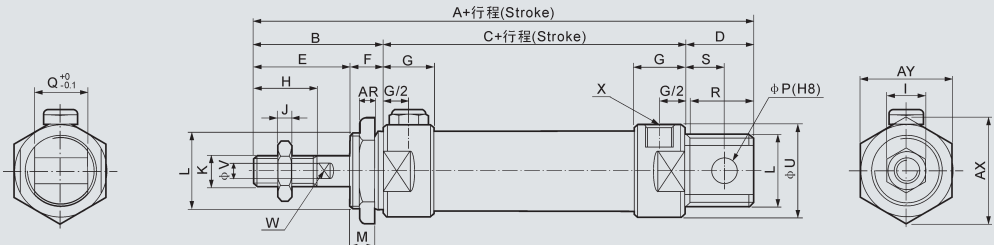
内径 / 符号 Inside Diameter/Symbol	A	A1	A2	B	C	D	D1	E	F	G	H	I	J	K
16	104	104	90	38	52	15	15	24	14	11	16	10	5	M6×1
20	131	122	110	40	70	21	12	28	12	16	20	12	6	M8×1.25
25	135	128	114	44	70	21	14	30	14	16	22	17	6	M10×1.25
32	141	128	114	44	70	27	14	30	14	16	22	17	6	M10×1.25
40	165	152	138	46	92	27	14	32	14	22	24	17	7	M12×1.25
内径 / 符号 Inside Diameter/Symbol	L	M	P	Q	R	R1	S	U	V	W	X	AR	AX	AY
16	M16×1.5	8	6	12	13	13	6	20	6	/	M5	7	24	27.5
20	M22×1.5	10	8	16	19	12	12	29	8	6	G1/8	7	33	29
25	M22×1.5	12	8	16	19	14	12	34	10	8	G1/8	7	33	29
32	M24×2.0	12	10	16	25	14	15	39.5	12	10	G1/8	8	37	32
40	M30×2.0	12	12	20	25	14	15	49.5	16	14	G1/4	9	47	41

MAL 铝合金迷你缸

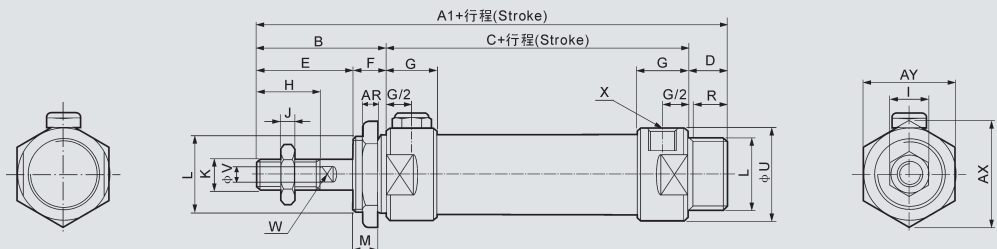
MAL Aluminum alloy Mini Cylinder

外形尺寸 | Overall Dimension

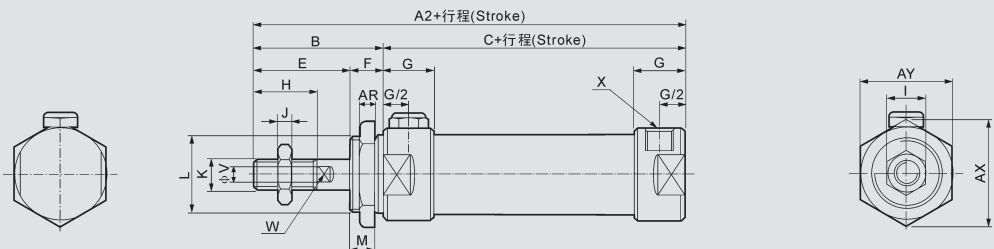
MSAL-CA



MSAL-CM



MSAL-U



尺寸表 | Dimension Sheet

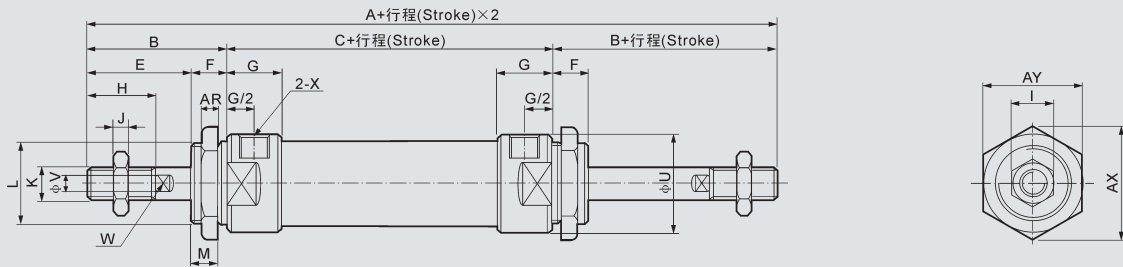
符号 Symbol	A		A1		A2		B	C		D	D1	E	F	G	H	I	J
	0-50	51-100	51-100	0-50	51-00	0-50		51-100									
20	131	156	122	147	110	135	40	70	95	21	12	28	12	16	20	12	6
25	135	160	128	153	114	139	44	70	95	21	14	30	14	16	22	17	6
32	141	166	128	153	114	139	44	70	95	27	14	30	14	16	22	17	6
40	165	190	152	177	138	163	46	92	117	27	14	32	14	22	24	17	7
内径 / 符号 Inside Diameter/Symbol	K		L		M	P	Q	R	R1	S	U	V	W	X	AR	AX	AY
20	M8×1.25		M22×1.5		10	8	16	19	12	12	29	8	6	G1/8	7	33	29
25	M10×1.25		M22×1.5		12	8	16	19	14	12	34	10	8	G1/8	7	33	29
32	M10×1.25		M24×2.0		12	10	16	25	14	15	39.5	12	10	G1/8	8	37	32
40	M12×1.25		M30×2.0		12	12	20	25	14	15	49.5	16	14	G1/4	9	47	41

MAL 铝合金迷你缸

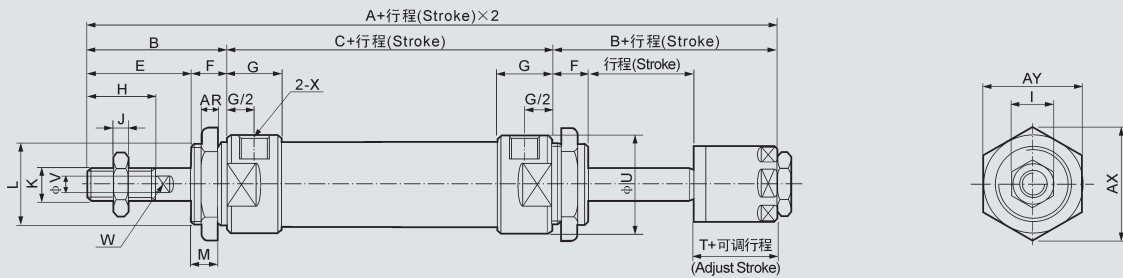
MAL Aluminum alloy Mini Cylinder

外形尺寸 | Overall Dimension

MALD



MALJ



尺寸表 | Dimension Sheet

内径 / 符号 Inside Diameter/Symbol	A	A1	B	C	E	F	G	H	I	J	K
20	131	122	40	70	28	12	16	20	12	6	M8×1.25
25	135	128	44	70	30	14	16	22	17	6	M10×1.25
32	141	128	44	70	30	14	16	22	17	6	M10×1.25
40	165	152	46	92	32	14	22	24	17	7	M12×1.25
内径 / 符号 Inside Diameter/Symbol	L		M	U	V	W	X	AR	AX	AY	T
20	M22×1.5		10	29	8	6	G1/8	7	33	29	19
25	M22×1.5		12	34	10	8	G1/8	7	33	29	21
32	M24×1.5		12	39.5	12	10	G1/8	8	37	32	21
40	M30×2.0		12	49.5	16	14	G1/4	9	47	41	21

XNC系列ISO6431 标准气缸

XNC Series ISO6431 Standard Cylinder



订购码 | Ordering Code

XNC	-	63	X	50		PPV	-	A	-	S2
型号 XNC: 基本型 Model XNC: Basic Type		缸径 Bore Size		行程 Stroke		缓冲 空白: 无缓冲 PPV: 带缓冲 Buffer Blank: Non Buffer PPV: Attach Buffer		磁石代号 空白: 标准型 A: 内置磁环 Magnet Code Blank: Standard type A: Magnet inside		S2: 双活塞杆 S2: Double Piston Rod

规格 | Specification

内径 Bore (mm)	32	40	50	63	80	100
工作介质 Motion Pattern	经过滤的空气 Filtered Air					
动作形式 Working Medium	双动 Double Action					
耐压实验压力 Compression Pressure	1.5MPa					
最高使用压力 Max. Operating Pressure	1.0MPa					
最低工作压力 Min. Operating Pressure	0.1MPa					
缓冲 Buffer	气缓冲 (标准) Air Buffer(Standard)					
环境温度 Condition Temperature	5~60℃					
使用速度 Operating Speed	50~500mm/s					
行程误差 Margin of Stroke Error (mm)	0~250 ^{+1.0} ₀		251~1000 ^{+1.5} ₀		1001~1500 ^{+2.0} ₀	
使用寿命 Operating Life	不低于 Not less than 4000Km					
润滑 Lubricate	不需要 Not Necessary+1.0					
接管口径 Joint Pipe Bore	1/8"	1/4"		3/8"		1/2"

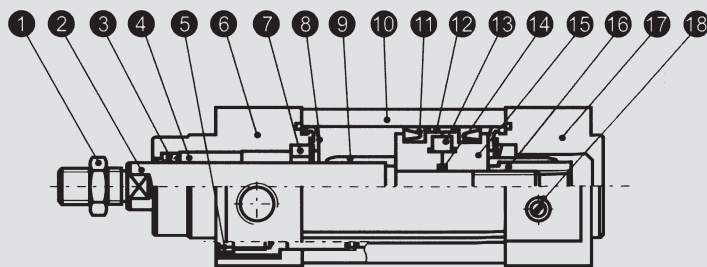
XNC系列ISO6431 标准气缸

XNC Series ISO6431 Standard Cylinder

行程| Stroke

内径 Bore	标准行程Stan- dard Stroke	缓冲行程 Buffer Stroke	最大行程范围 Max.Stroke Range	内径 Bore	磁性开关最小行程 Magnetism Switch Min.Stroke	磁性开关型号Magne- tism Switch Type
32	25 40 50 80	20	10~2000	32	32	KCK2400C (埋入式) Embedding Type
40				40		
50	100 125 160	22		50	50	
63	200 250 320			63	63	
80	400 500	32		80	80	
100				100	100	

结构图| Structure Drawing



零件表| Part Sheet

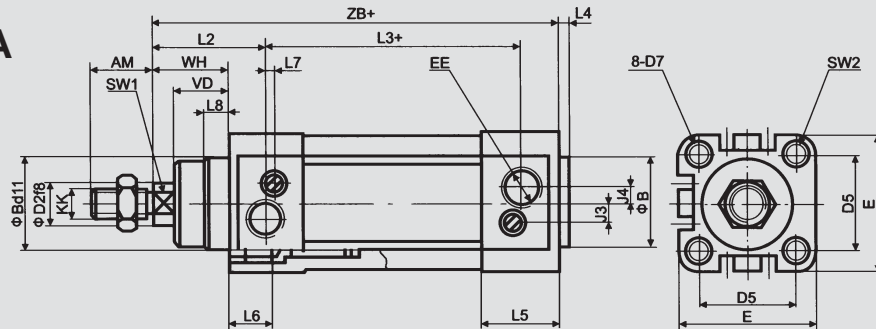
序号 No	名称 Name	材料 Material	序号 No	名称 Name	材料 Material
1	螺母 Nut	35	12	衬圈 Washer	F4
2	活塞杆 Piston Pot	45	13	磁环 Magnetic ring	磁塑 Magnetic Plastic
3	轴封 Axes Envelop	PU	14	“O”形圈 “O”Ring	NBR
4	导封 Guide Envelop	含油轴承 Oiliness Bearing	15	前后活塞 Front and Back Piston	LY12
5	连杆螺栓 Pot Bolt	35	16	压紧螺母 Compaction Nut	LY12
6	前端盖 Front Cover	ZZnAl4-1	17	后端盖 Back Cover	ZZnAl4-1
7	缓冲密封圈 Buffer Airproof Loop	PU	18	调节阀针 Adjust Valve Pin	HPb59-1
8	缓冲密封垫 Buffer Airproof Spacer	PU			
9	缓冲活塞 Buffer Piston	POM			
10	缸筒 Sylinder Canister	A6063-TS			
11	“Y”形圈 “Y”Ring	NBR			

XNC系列ISO6431 标准气缸 DNC Series ISO6431 Standard Cylinder

基本型 Basic Type

外形尺寸 | Overall Dimension

XNC...PPV-A



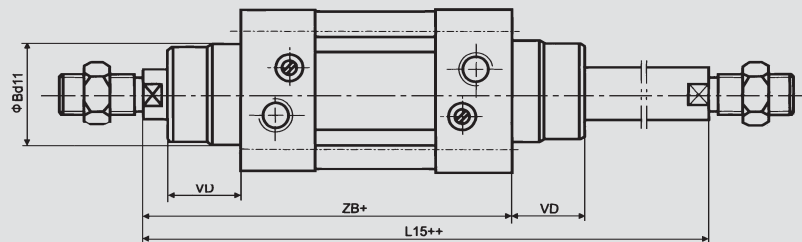
尺寸表 | Dimension Sheet

缸径 Bore	AM	B	D2	D5	D7	E	EE(G)	J3	J4	KK	L2	L3	L4	L5	L6	L7	L8	SW1	SW2	VD	WH	ZB
32	22	30	12	32.5	M6	45	1/8	6	5.2	M10×1.25	41.6	62.8	4	25.1	16	3.3	10	10	6	18	26	120
40	24	35	16	38	M6	54	1/4	8	6	M12×1.25	44	77	4	29.6	16	3.6	10.5	13	6	21.5	30	135
50	32	40	20	46.5	M8	64	1/4	10	8.5	M16×1.5	51	78	4	29.6	17	5.1	11.5	17	8	28	37	143
63	32	45	20	56.5	M8	75	3/8	12.4	10	M16×1.5	54	87	4	35.6	17	6.6	15	17	8	28.5	37	158
80	40	45	25	72	M10	93	3/8	12.5	8	M20×1.5	62.4	95.2	4	35.9	17	10.5	15.7	22	10	34.7	46	174
100	40	55	25	89	M10	110	1/2	11.8	10	M20×1.5	69.8	100.4	4	38.8	17	8	19.2	22	10	38.2	51	189

双活塞杆型 Double Piston Type

外形尺寸 | Overall Dimension

XNC...PPV-A-S2



缸径 Bore	B	L15	VD	ZB
32	30	46	18	120
40	35	165	21.5	135
50	40	180	28	143
63	45	195	28.5	158
80	45	220	34.7	174
100	55	240	38.2	189

SI系列ISO6431标准气缸

SI Series ISO6431 Standard Cylinder



订购码 | Ordering Code

SI - **50** X **50** - **S**

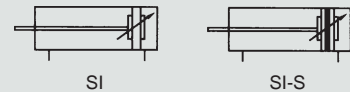
系列代号
SI: ISO6431标准复动型
Model
SI:ISO6431

缸径
Bore Size

行程
Stroke

磁石代号
空白: 不附磁
S: 附磁石
Magnet Code
Blank: Standard type
S:Magnet inside

图形符号 | Graphic Symbol



气缸理论出力表 | Cylinder theory output

气缸内径 Cylinder Inside Diameter	活塞杆外径 External Diameter of Piston Rod	动作型式 Motion Pattern	受压面积 (cm ²) Compression Area	空气压力 Air Pressure (Kg/cm ²)									
				1	2	3	4	5	6	7	8	9	
32	12	复动型 Double Action	压侧 Press Side	8.04	8.04	16.08	24.12	32.16	40.20	48.24	56.28	64.32	72.36
			拉侧 Pull Side	6.90	6.90	13.80	20.70	27.60	34.50	41.40	48.30	55.20	62.10
40	16	复动型 Double Action	压侧 Press Side	12.56	12.56	25.12	37.68	50.24	62.80	75.36	87.92	100.24	113.04
			拉侧 Pull Side	10.55	10.55	21.10	31.65	42.20	52.75	63.30	73.85	84.40	94.95
50	20	复动型 Double Action	压侧 Press Side	19.63	19.63	39.26	58.89	78.52	98.15	117.78	137.41	157.04	176.67
			拉侧 Pull Side	16.49	16.49	32.98	49.47	65.96	82.45	98.94	115.43	139.92	148.41
63	20	复动型 Double Action	压侧 Press Side	31.17	31.17	62.34	93.51	124.68	155.85	187.02	218.19	249.36	280.53
			拉侧 Pull Side	28.03	28.03	56.06	84.09	112.12	140.15	168.18	196.21	224.24	252.27
80	25	复动型 Double Action	压侧 Press Side	50.26	50.26	100.52	150.78	201.04	251.30	301.56	351.82	402.08	452.34
			拉侧 Pull Side	45.36	45.36	90.72	136.08	181.44	226.80	272.16	317.52	362.88	408.24
100	25	复动型 Double Action	压侧 Press Side	78.53	78.53	157.06	235.59	314.12	392.65	471.18	549.71	628.24	706.77
			拉侧 Pull Side	71.47	71.47	142.94	214.41	285.88	357.35	428.82	500.29	571.76	643.23
125	32	复动型 Double Action	压侧 Press Side	122.72	122.72	245.44	368.16	490.88	613.60	736.32	859.04	981.76	1104.48
			拉侧 Pull Side	114.68	114.68	229.36	344.04	458.72	573.40	688.08	802.76	917.44	1032.12
160	40	复动型 Double Action	压侧 Press Side	201.06	201.06	402.12	603.18	804.24	1005.30	1206.36	1407.42	1608.48	1809.54
			拉侧 Pull Side	188.49	188.49	376.98	565.47	753.96	942.45	1130.94	1319.43	1507.92	1696.41
200	40	复动型 Double Action	压侧 Press Side	314.16	314.16	628.32	942.48	1256.64	1570.80	1884.96	2199.12	2513.28	2827.44
			拉侧 Pull Side	301.57	301.57	603.14	904.71	1206.28	1507.85	1809.42	2110.99	2412.56	2714.13

SI系列ISO6431标准气缸 SI Series ISO6431 Standard Cylinder

规格 | Specification

内径 Bore (mm)	32	40	50	63	80	100	125	160	200
动作型式 Motion Pattern	复动型 Double Action Type								
工作介质 Working Medium	空气 Air								
固定型式 Fixed Type	基本型/Basic Type, FA型/Type, FB型/Type, CA型/Type, CB型/Type, CR型/Type, LB型/Type, TC型/Type, TC-M型/Type								
使用压力范围 Working Pressure Range	0.1~0.9MPa								
保证耐压力 N. Proof Pressure	1.35MPa								
使用温度范围℃ Operating Temperature Range	0~70℃								
使用速度范围 Operating Speed Range	50~800 mm/s								
缓冲型式 Buffer Type	可调缓冲 Adjust Buffer								
缓冲行程 Buffer Stroke	24						32		
接管口径 Joint Pipe Bore	G1/8 "	G1/4 "		G3/8 "		G1/2 "		G3/4 "	

行程 | Stroke

内径 Bore (mm)	标准行程 Standard Stroke	最大行程 Max. Stroke	容许行程 Permissible Stroke
32	25 50 75 80 100 125 150 160 175 200 250 300 350 400 450 500	1000	2000
40	25 50 75 80 100 125 150 160 175 200 250 300 350 400 450 500 600 700 800	1200	2000
50	25 50 75 80 100 125 150 160 175 200 250 300 350 400 450 500 600 700 800 900 1000	1200	2000
63	25 50 75 80 100 125 150 160 175 200 250 300 350 400 450 500 600 700 800 900 1000	1500	2000
80	25 50 75 80 100 125 150 160 175 200 250 300 350 400 450 500 600 700 800 900 1000	1500	2000
100	25 50 75 80 100 125 150 160 175 200 250 300 350 400 450 500 600 700 800 900 1000	1500	2000
125	25 50 75 80 100 125 150 160 175 200 250 300 350 400 450 500 600 700 800 900 1000	1500	2000
160	25 50 75 80 100 125 150 160 175 200 250 300 350 400 450 500 600 700 800 900 1000	1500	2000
200	25 50 75 80 100 125 150 160 175 200 250 300 350 400 450 500 600 700 800 900 1000	1500	2000

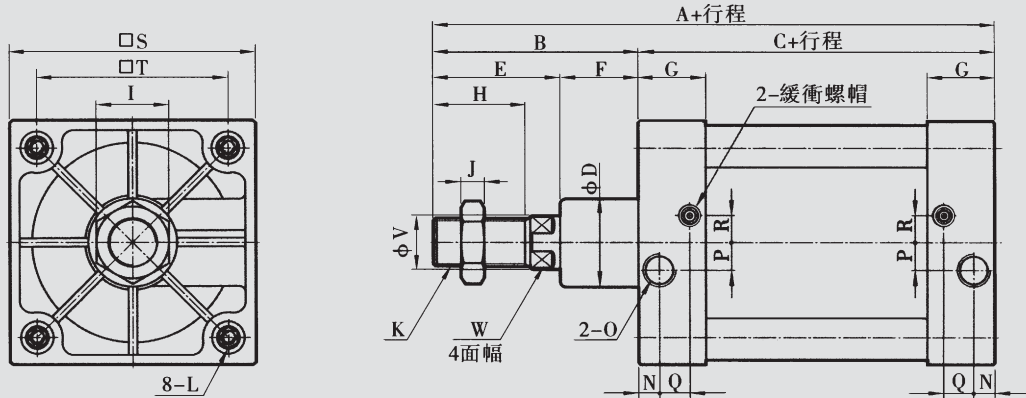
特殊行程请与本公司联系。

SI系列ISO6431标准气缸

SI Series ISO6431 Standard Cylinder

外形尺寸 | Overall Dimension

φ 32~ φ 200

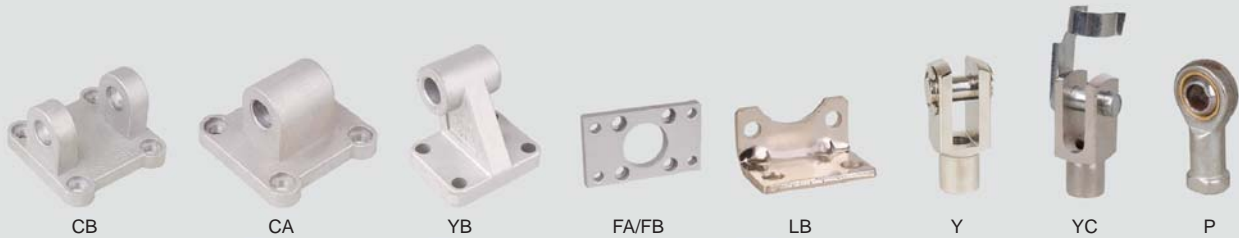


缸径/符号 Bore/ Symbol	A	B	C	D	E	F	G	H	I	J	K	L
32	142	48	94	30	32	16	28	22	17	6	M10×1.25	M6
40	159	54	105	35	36	18	29	24	19	7	M12×1.25	M6
50	175	69	106	40	44	25	31	32	24	8	M16×1.5	M8
63	190	69	121	45	44	25	32	32	24	8	M16×1.5	M8
80	214	86	128	45	56	30	35	40	30	10	M20×1.5	M10
100	229	91	138	55	59	32	36	40	30	10	M20×1.5	M10
125	279	119	160	60	74	45	46	54	41	13.5	M27×2	M12
160	332	152	180	65	94	58	50	72	55	18	M36×2	M16
200	347	167	180	75	107	60	50	72	55	18	M36×2	M16

缸径/符号 Bore/ Symbol	N	O	P	Q	R	S	T	V	W
32	13.5	1/8	4	7.5	7	47	32.5	12	10
40	16	1/4	6	9.5	9	53	38	16	13
50	18.5	1/4	8.5	6.7	9	65	46.5	20	17
63	19	3/8	6	7.7	9	75	56.5	20	17
80	19	3/8	10	5	13.5	95	72	25	22
100	18	1/2	12.5	10	14.5	115	89	25	22
125	23	1/2	14	12	14	140	110	32	27
160	25	3/4	15	12	20	180	140	40	36
200	25	3/4	15	12	20	220	175	40	36

ISO6431 标准气缸安装附件

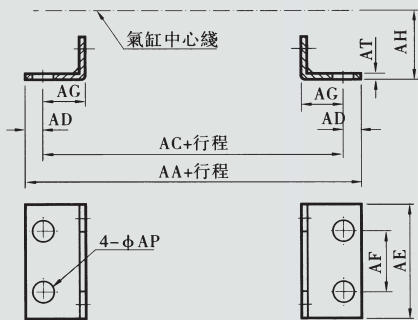
Mounting and Accessories for ISO6431 Standard Cylinder



订购码 | Ordering Code

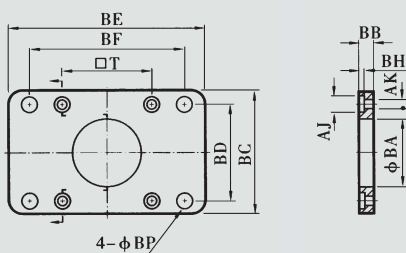


LB型 Type



符号 / 缸径 Symbol / Bore	32	40	50	63	80	100	125	160	200
AA	158	179	190	209	248	258	290	340	380
AC	142	161	170	185	210	220	250	300	320
AD	8	9	10	12	19	19	20	20	30
AE	47	53	63	75	95	115	140	180	220
AF	32	36	45	50	63	75	90	115	135
AG	24	28	32	32	41	45	45	60	70
AH	32	36	45	50	63	71	90	115	135
AP	7	9	9	9	12.5	14.5	16.5	18.5	24
AT	3	3	3	3	4	4	8	8	9

FA型 Type

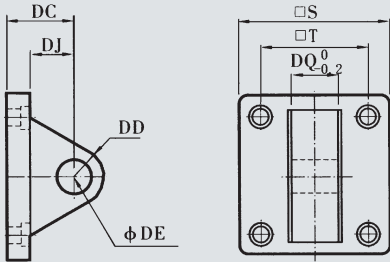


符号 / 缸径 Symbol / Bore	32	40	50	63	80	100	125	160	200
AJ	11	11	13	13	17	17	19	24.5	25
AK	7	7	9	9	11	11	13	16.75	17
BA	30.5	35.5	40.5	45.5	45.5	55.5	60.5	65.5	75.5
BB	10	10	12	12	16	16	20	20	25
BC	47	53	65	75	95	115	140	180	220
BD	32	36	45	50	63	75	90	115	135
BE	80	90	110	125	154	186	224	280	320
BF	64	72	90	100	126	150	180	230	270
BH	4	4	6	4	6	6	8	8	12
BP	7	9	9	9	12.5	14.5	16.5	18.5	24
T	32.5	38	46.5	56.5	72	89	110	140	175

ISO6431 标准气缸安装附件

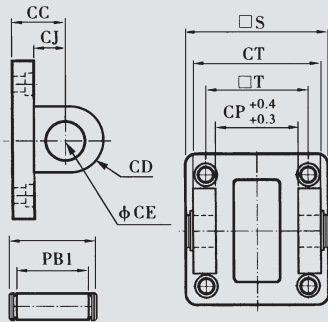
ISO6431 Standard Cylinder Mounting and Accessories

CA型 Type



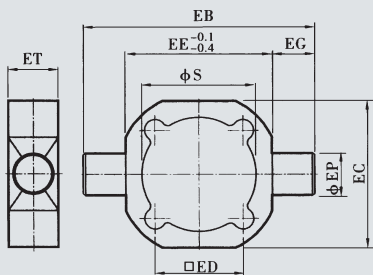
符号 / 缸径 Symbol / Bore	32	40	50	63	80	100	125	160	200
S	47	53	65	75	95	115	140	180	220
T	32.5	38	46.5	56.5	72	89	110	140	175
DC	22	25	27	32	36	41	50	55	60
DD	9	12	12	15	15	20	25	30	30
DE	10	12	12	16	16	20	25	30	30
DJ	13	16	17	22	22	27	33	35.5	36
DQ	25.8	27.8	31.7	39.7	49.7	59.7	69.7	89.7	89.7

CB型 Type



符号 / 缸径 Symbol / Bore	32	40	50	63	80	100	125	160	200
CC	22	25	27	32	36	41	50	55	60
CD	9	12	12	15	15	20	25	30	30
CE	10	12	12	16	16	20	25	30	30
CJ	13	16	17	22	22	27	31	35.5	36
CP	26	28	32	40	50	60	70	90	90
CT	45	52	60	70	90	110	130	170	170
PAI	51	59	67	77	97	119	139	181	181
PBI	45.5	52.5	60.5	70.5	90.5	110.5	130.5	170.5	170.5
S	47	53	65	75	95	115	140	180	220
T	32.5	38	46.5	56.5	72	89	110	140	175

TC型 Type

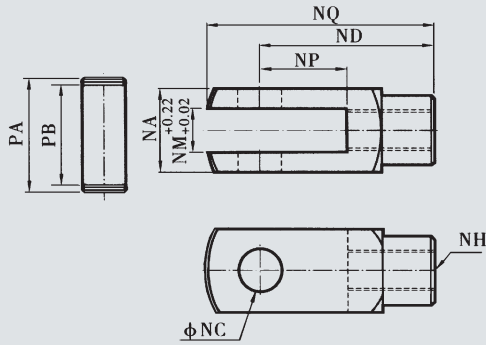


符号 / 缸径 Symbol / Bore	32	40	50	63	80	100	125	160	200
EB	100	113	125	140	160	182	-	-	-
EC	50	58	70	80	100	126	-	-	-
ED	32.5	38	46.5	56.5	72	89	-	-	-
EE	50	63	75	90	110	132	-	-	-
EG	25	25	25	25	25	25	-	-	-
EP	12	16	16	20	20	25	-	-	-
ET	20	24	28	28	28	28	-	-	-
S	36	45	55	68	86	106	-	-	-

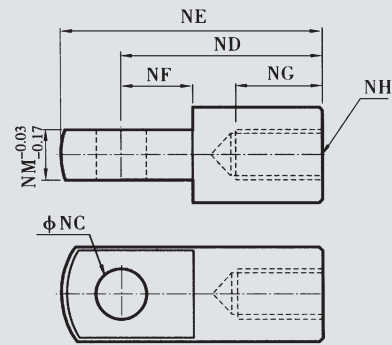
ISO6431 标准气缸安装附件

ISO6431 Standard Cylinder Mounting and Accessories

Y接头 Tie-in

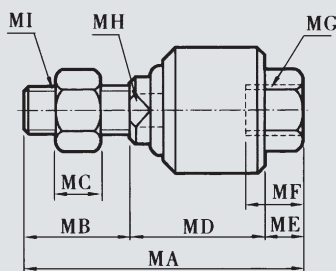


I接头 Tie-in



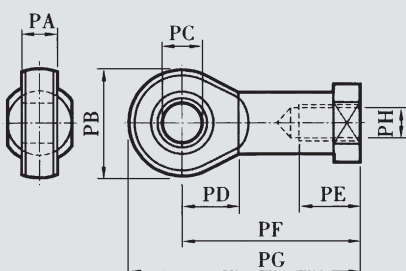
缸径 / 符号 Bore / Symbol	NA	NC	ND	NE	NF	NG	NH	NM	NP	NQ	PA	PB
32	19	10	40	52	15	20	M10×1.25	10	20	52	26.2	20
40	25.4	12	48	67	24	20	M12×1.25	12	24	62	32.8	26.5
50	32	16	64	89	32	23	M16×1.5	16	32	83	39.3	33
63	32	16	64	89	32	23	M16×1.5	16	32	83	39.3	33
80	44.4	20	80	112	40	30	M20×1.5	20	40	105	53.3	45
100	44.4	20	80	112	40	30	M20×1.5	20	40	105	53.3	45
125	55	30	110	155	50	56	M27×2.0	30	54	148	64	55.6
160	70	35	144	201	50	72	M36×2.0	35	72	191	80	70.6
200	70	35	144	201	55	72	M36×2.0	3	72	191	80	70.6

浮动接头 / Float Joint



缸径 / 符号 Bore / Symbol	MA	MB	MC	MD	ME	MF	MG	MH	MI
32	73	20	6	45	8	26	M10×1.25	12	M10×1.25
40	77	24	7	46	7	26	M12×1.25	12	M12×1.25
50	106	32	8	62	12	34	M16×1.5	19	M16×1.5
63	106	32	8	62	12	34	M16×1.5	19	M16×1.5
80	122	40	10	68	14	42	M20×1.5	19	M20×1.5
100	122	40	10	68	14	42	M20×1.5	19	M20×1.5
125	147	54	13.5	77	16	40	M27×2.0	24	M27×2.0
160	251	72	18	161	18	78	M36×2.0	36	M36×2.0
200	251	72	18	161	18	78	M36×2.0	36	M36×2.0

鱼眼接头 / Fisheye Joint



缸径 / 符号 Bore / Symbol	PA	PB	PC	PD	PE	PF	PG	PH
32	14	28	10	15	20	43	57	M10×1.25
40	16	32	12	17	22	50	66	M12×1.25
50	21	42	16	22	28	64	85	M16×1.5
63	21	42	16	22	28	64	85	M16×1.5
80	25	50	20	26	33	77	102	M20×1.5
100	25	50	20	26	33	77	102	M20×1.5
125	37	70	30	36	51	110	145	M27×2.0
160	43	80	35	41	56	125	165	M36×2.0
200	43	50	35	41	56	125	165	M36×2.0

SC系列标准气缸

SC Series Standard Cylinder



订购码 | Ordering Code

SC	D	-	50	X	50	-	25	-	S	-	LB
型号 SC: 拉杆式 SU: 拉杆内藏式 Model SC: Tie rod SU: Mickey mouse	空白: 标准复动型 D: 双轴复动型 J: 双轴可调行程型 Action Blank: Standard Double D: Double-shaft Double J: Double-shaft and adjustable stroke type		缸径 Bore Size		行程 Stroke		SCJ可调行程 SUJ可调行程 SCJ adjustable stroke type SUJ adjustable stroke type		磁石代号 S: 附磁石 空白: 不附磁石 Magnet Code S: Magnet inside Blank: Standard		固定型式 空白: 基本型 LB: 前后固定型 FA: 前盖固定型(前法兰) FB: 后盖固定型(后法兰) CA: 后盖固定型(单耳环) CB: 后盖固定型(双耳环) TC: 中间摇摆式 TC-M: 摇摆式附脚座 Fixed Type Blank: basic type LB: axial foot FA: front flange FB: rear flange CA: single clevis CB: double clevis TC: center trunion TC-M: center trunion with mounting

规格 | Specification

内径 Bore (mm)	32	40	50	63	80	100	125	160	200
动作形式 Motion Pattern	复动型 Double Action								
工作介质 Working Medium	空气 Air								
* 固定型式 Fixed Type	基本型 Basic type FA型 type FB型 type CA型 type CB型 type LB型 type TC型 type TC-M型 type								
使用压力范围 Operating Voltage Range	1.0~9.0 Kg/cm ²								
保证耐压力 Ensured Pressure Resistance	13.5 Kg/cm ²								
使用温度范围 Operating Temperature Range	0~70℃								
使用速度范围 Operating Speed Range	50~800 mm/s								
缓冲型式 Buffer Type	可调缓冲 Adjustable Buffer								
缓冲行程 Buffer Stroke	20				26				45
接管口径 Joint Pipe Bore	G1/8"	G1/4"		G3/8"		G1/2"		G3/4"	

*SCD、SCJ的固定型式为：FA、FB、LB、TC和TC-M型。 SCD,SCJ Fixed Type: FA,FB,LB,TC & TC-M type.

SC系列标准气缸 SC Series Standard Cylinder

行程 | Stroke

内径 Bore (mm)	标准行程 Standard Stroke																最大行程 Max. Stroke	容许行程 Permissible Stroke					
32	25	50	75	80	100	125	150	160	175	200	250	300	350	400	450	500	1000	2000					
40	25	50	75	80	100	125	150	160	175	200	250	300	350	400	450	500	600	700	800	1200	2000		
50	25	50	75	80	100	125	150	160	175	200	250	300	350	400	450	500	600	700	800	900	1000	1200	2000
63	25	50	75	80	100	125	150	160	175	200	250	300	350	400	450	500	600	700	800	900	1000	1500	2000
80	25	50	75	80	100	125	150	160	175	200	250	300	350	400	450	500	600	700	800	900	1000	1500	2000
100	25	50	75	80	100	125	150	160	175	200	250	300	350	400	450	500	600	700	800	900	1000	1500	2000
125	25	50	75	80	100	125	150	160	175	200	250	300	350	400	450	500	600	700	800	900	1000	1500	2000
160	25	50	75	80	100	125	150	160	175	200	250	300	350	400	450	500	600	700	800	900	1000	1500	2000
200	25	50	75	80	100	125	150	160	175	200	250	300	350	400	450	500	600	700	800	900	1000	1500	2000

气缸理论出力表 | Cylinder theory output Sheet

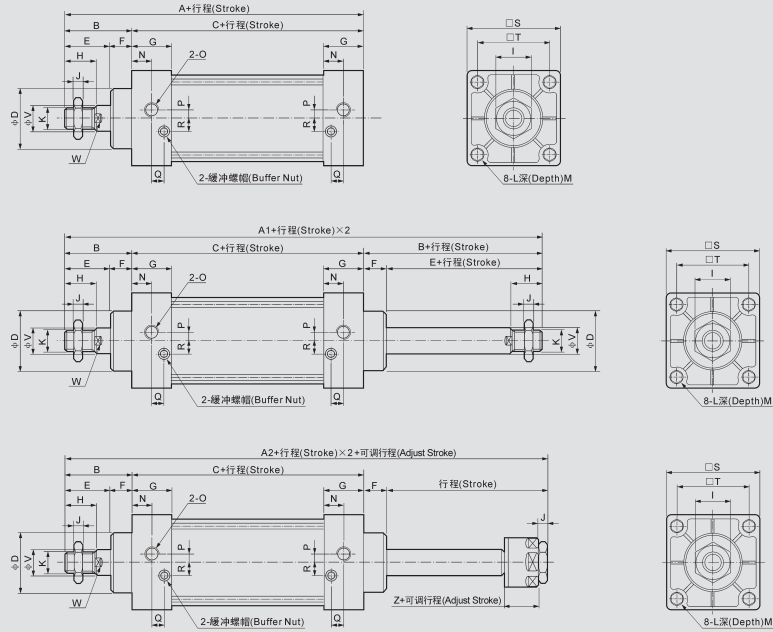
气缸内径 Cylinder Inside Diameter	32	40	50	63	80	100	125	160	200										
活塞杆外径 External Diameter of Piston Rod	12	16	20	20	25	25	32	40	40										
动作型式 Motion Pattern	复动型 Double Action		复动型 Double Action		复动型 Double Action		复动型 Double Action		复动型 Double Action		复动型 Double Action		复动型 Double Action		复动型 Double Action		复动型 Double Action		
	压侧 Pressure Side	拉侧 Pull Side	压侧 Pressure Side	拉侧 Pull Side	压侧 Pressure Side	拉侧 Pull Side	压侧 Pressure Side	拉侧 Pull Side	压侧 Pressure Side	拉侧 Pull Side	压侧 Pressure Side	拉侧 Pull Side	压侧 Pressure Side	拉侧 Pull Side	压侧 Pressure Side	拉侧 Pull Side	压侧 Pressure Side	拉侧 Pull Side	
受压面积 (cm ²) Compression Area	8.04	6.90	12.56	10.55	19.63	16.49	31.17	28.03	50.26	45.36	78.53	73.62	122.70	114.60	201.00	188.40	314.20	301.40	
空气压力 Air Pressure (Kgf/cm ²)	1	8.04	6.90	12.56	10.55	19.63	16.49	31.17	28.03	50.26	45.36	78.53	73.62	122.70	114.60	201.00	188.40	314.20	301.40
	2	16.08	13.80	25.12	21.10	39.26	32.98	62.34	56.06	100.52	90.72	157.06	147.24	245.40	229.20	402.00	376.80	628.40	602.80
	3	24.12	20.70	37.68	31.65	58.89	49.47	93.51	84.09	150.78	136.08	235.59	220.86	368.10	343.80	603.00	565.20	942.60	904.20
	4	32.16	27.60	50.24	42.20	78.52	65.96	124.68	112.12	201.04	181.44	314.12	294.48	490.80	458.40	804.00	753.60	1256.80	1205.60
	5	40.20	34.50	62.80	52.75	98.15	82.45	155.85	140.15	251.30	226.80	392.65	368.10	613.50	573.00	1005.00	942.00	1571.00	1507.00
	6	48.24	41.40	75.36	63.30	117.78	98.94	187.02	168.18	301.56	272.16	471.18	441.72	736.20	687.60	1206.00	1130.40	1885.20	1808.40
	7	56.28	48.30	87.92	73.85	137.41	115.43	218.19	196.21	351.82	317.52	549.71	515.34	858.90	802.20	1407.00	1318.80	2199.40	2109.80
	8	64.32	55.20	100.48	84.40	157.04	131.92	249.36	224.24	402.08	362.88	628.24	588.96	981.60	916.80	1608.00	1507.20	2513.60	2411.20
	9	72.36	62.10	113.04	94.95	176.67	148.41	280.53	252.27	452.34	408.24	706.77	662.58	1104.30	1031.40	1809.00	1695.60	2827.80	2712.60

SC系列标准气缸

SC Series Standard Cylinder

外形尺寸 | Overall Dimension

SC Series



尺寸表 | Dimension Sheet

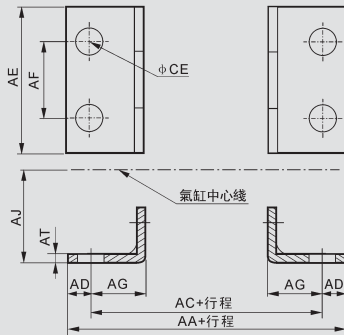
内径 / 符号 Inside Diameter/Symbol	A	A1	A2	B	C	D	E	F	G	H	I	J	K
32	140	187	182	47	93	28	32	15	27.5	22	17	6	M10×1.25
40	142	191	185	48	93	32	34	15	27.5	24	17	7	M12×1.25
50	150	207	196	57	93	38	42	15	27.5	32	23	8	M16×1.5
63	153	210	199	57	96	38	42	15	27.5	32	23	8	M16×1.5
80	183	258	243	75	108	47	54	21	33	40	26	10	M20×1.5
100	183	258	243	75	108	47	54	21	33	40	26	10	M20×1.5
125	226	/	/	104	122	55	70	34	33	54	40	10	M27×2
160	291	/	/	123	168	62	91	32	48	72	55	18	M36×2
200	347	/	/	167	180	80	112	55	48	72	55	18	M36×2
内径 / 符号 Inside Diameter/Symbol	L	M	N	O	P	Q	R	S	T	V	W	Z	
32	M6×1	9.5	13.5	G1/8	3.5	7.5	7	45	33	12	12	21	
40	M6×1	9.5	1.5	G1/4	6	8.2	9	50	37	16	14	21	
50	M6×1	9.5	13.5	G1/4	8.5	8.2	9	62	47	20	17	23	
63	M8×1.25	9.5	13.5	G3/8	7	8.2	8.5	75	56	20	17	23	
80	M10×1.5	11.5	16.5	G3/8	10	9.5	14	94	70	25	22	29	
100	M10×1.5	11.5	16.5	G1/2	11	9.5	14	112	84	25	22	29	
125	M12×1.75	15.5	16.5	G1/2	/	/	/	140	110	32	27	/	
160	M16×2	17.5	25	G1/2	/	/	/	180	140	40	36	/	
200	M16×2	17.5	25	G3/4	/	/	/	220	175	40	36	/	

SC系列标准气缸附件

SC Series Standard Cylinder Accessory

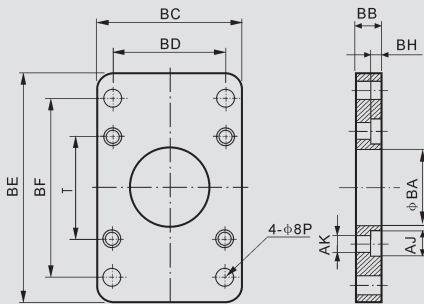
外形尺寸 | Overall Dimension 尺寸表 | Dimension Sheet

LB脚架 Foot Rest



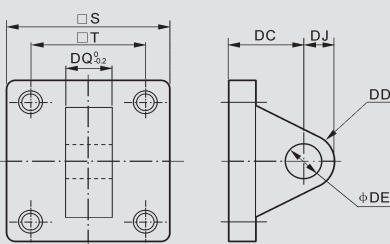
符号 / 缸径 Symbol / Bore	32	40	50	63	80	100	125	160	200
AA	153	169	173	184	200	210	249	328	380
AC	134	140	149	158	168	174	213	288	320
AD	9.5	14.5	12	12	16	18	18	20	30
AE	50	57	68	80	97	112	140	180	220
AF	33	36	47	56	70	84	90	115	135
AG	20.5	23.5	28	31	30	30	45	60	70
AJ	28	30	36.5	41	49	57	90	115	135
AP	9	12	12	12	14	14	16	18	22
AT	3.2	3.2	3.2	3.2	4	4	8	8	10

FA、FB法兰 Flange



符号 / 缸径 Symbol / Bore	32	40	50	63	80	100	125	160	200
BA	28.3	32.3	38.3	38.3	47.3	47.3	56	63	81
BB	10	10	10	12	16	16	20	25	25
BC	47	52	65	76	95	115	140	180	220
BD	33	36	47	56	70	84	90	115	135
BE	72	84	104	116	143	162	224	280	320
BF	58	70	86	98	119	138	180	230	270
BH	6.5	6.5	6.5	8.5	10.5	10.5	15	20	20
AJ	10.5	10.5	13.5	13.5	16.6	16.6	19	25	25
AK	6.5	6.5	8.5	8.5	10.5	10.5	12.5	16.5	16.5
BP	7	7	9	9	12	12	16	18	22
T	33	37	47	56	70	84	110	140	175

CA单耳环 Single Earring



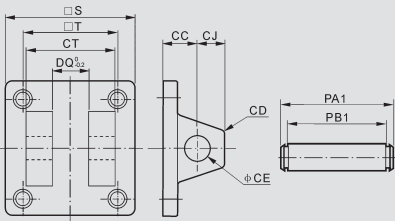
符号 / 缸径 Symbol / Bore	32	40	50	63	80	100	125	160	200
S	48	50	62	75	94	112	140	180	220
T	33	37	47	56	70	84	110	140	175
DC	34	34	34	34	48	48	50	55	60
DD	14	14	15	15	20	20	25	30	30
DE	12	14	14	14	20	20	25	30	30
DJ	14	14	15	15	20	20	25	30	30
DQ	16	20	20	20	32	32	70	90	90

SC系列标准气缸附件

SC Series Standard Cylinder Accessory

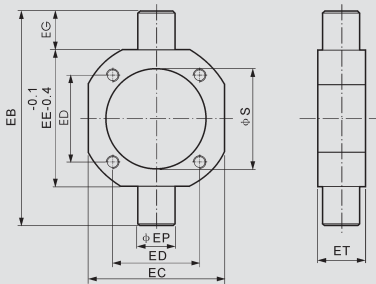
外形尺寸 | Overall Dimension 尺寸表 | Dimension Sheet

CB双耳环 Double Earring



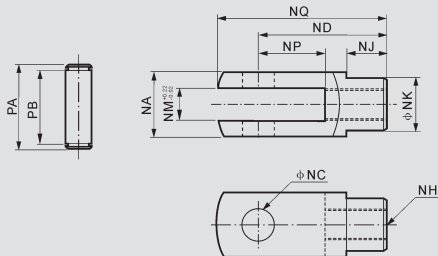
符号 / 缸径 Symbol / Bore	32	40	50	63	80	100	125	160	200
CC	19	19	19	19	32	32	50	55	60
CD	5	5	3	3	8	8	25	30	30
CE	12	14	14	14	20	20	25	30	30
CJ	13	13	15	15	21	21	25	30	30
CP	16.3	20.5	20.3	20.3	32.3	32.3	70	90	90
CT	32	44	52	52	64	64	120	160	160
PAI	41	51.8	60.3	60.3	73.8	73.8	130	170	170
PBI	33.5	45.8	54	54	65.5	65.5	121.5	161.5	161.5
S	48	50	62	75	94	112	140	180	220
T	33	37	47	56	70	84	110	140	175

TC中摆 Dimension

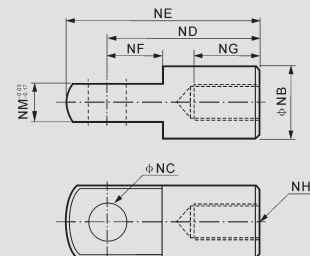


符号 / 缸径 Symbol / Bore	40	50	63	80	100	125	160	200
EB	113	126	138	164	182	210	264	336
EC	63	76	88	114	132	160	200	240
ED	37	47	56	70	84	110	140	175
EE	63	76	88	114	132	160	200	240
EG	25	25	25	25	25	25	32	48
EP	25	25	25	25	25	25	32	38
ET	30	30	30	30	30	30	38	44
S	45.5	55.5	68.5	87.5	107.5	134.5	172.5	212.5

Y接头 Connection

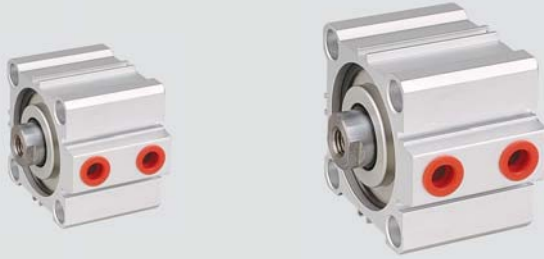


I接头 Connection



符号 / 缸径 Symbol / Bore	NA	NB	NC	ND	NE	NF	NG	NH	NJ	NK	NM	NP	NQ	PA	PB
32	19	20	10	40	52	15	20	M10×1.25	12	18	10	20	52	26.2	20
40	25.4	24	12	48	67	24	20	M12×1.25	20	23	12	24	62	32.8	26.5
50	32	32	16	64	89	32	23	M16×1.5	22	30	16	32	83	39.3	33
63	32	32	16	64	89	32	23	M16×1.5	22	30	16	32	83	39.3	33
80	44.4	40	20	80	112	40	30	M20×1.5	30	39	20	40	105	53.3	45
100	44.4	40	20	80	112	40	30	M20×1.5	30	39	20	40	105	53.3	45

CQ2系列薄型气缸 CQ2 Series Compact Cylinder



订购码 | Ordering Code

CQ2 - **B** - **12** - **10** **D**

系列代号
Model

安装

B: 通孔
A: 两端内螺纹

Installation

B: Through Hole
A: Double End Internal Thread

缸径

Bore Size

行程

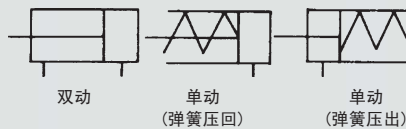
Stroke

动作

Stroke

D: Double action
S: Single action (draw-out)
T: Single action (draw-in)

图形符号 | Graphic Symbol



规格 | Specification

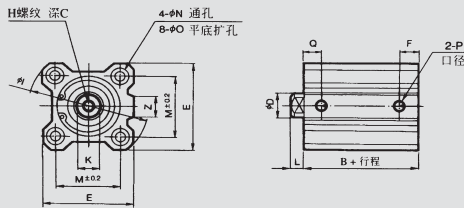
内径 Bore (mm)	12	16	20	25	32	40	50	63	80	100
工作介质 Working Medium	空气 Air									
动作型式 Motion Pattern	双动 Double Action 单动 Single Action (弹簧压回/弹簧压出)									
保证耐压力 n. proof pressure	1.5MPa									
最高使用压力 Max. Operating Pressure	0.99MPa									
环境和液体温度 Condition and Medium Temperature	5~60℃									
杆端螺纹 Boom End Screw Thread	内螺纹(标准) 外螺纹(任选) Internal Thread(Standard) Male Screw(Take Whichever)									
缓冲 Buffer	无 Non									
行程公差 Stroke Allowable Error	+1.0 0									
*润滑 Lubricate	不需要 Non									
安装 Installation	通孔(标准), 两端内螺纹(任选) Through Hole(Standard), Double End Internal Screw(Take Whichever)									
接管口径RC (PT) Joint Bore RC(PT)	M5×0.8				1/8		1/4		3/8	

CQ2系列薄型气缸

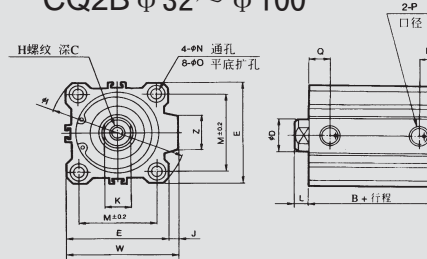
CQ2 Series Compact Cylinder

外形尺寸 | Overall Dimension

CQ2B $\phi 12 \sim \phi 25$



CQ2B $\phi 32 \sim \phi 100$



双动气缸尺寸表 | Double Action Cylinder Overall Dimension

型号 Model	*行程范围 mm	B	ϕD	E	F	H	C	ϕI	J	K	L	M	ϕN	ϕO	P	Q	W	Z
CQ2B12-□D	5~30	17	6	25	5	M3×0.5	6	32	-	5	3.5	15.5	3.5	6.5深3.5	M5×0.8	7.5	-	-
CQ2B16-□D	5~30	18.5	8	29	5.5	M4×0.7	8	38	-	6	3.5	20	3.5	6.5深3.5	M5×0.8	8	-	10
CQ2B20-□D	5~50	19.5	10	36	5.5	M5×0.8	7	47	-	8	4.5	25.5	5.5	9深7	M5×0.8	9	-	10
CQ2B25-□D	5~50	22.5	12	40	5.5	M6×1.0	12	52	-	10	5	28	5.5	9深7	M5×0.8	11	-	10
	7.5																	
CQ2B32-□D	5	23	16	45	5.5	M8×1.25	13	60	4.5	14	7	34	5.5	9深7	M5×0.8	11.5	49.5	18
	10~50				7.5													
CQ2B40-□D	5~50	29.5	16	52	8	M8×1.25	13	69	5	14	7	40	5.5	9深7	1/8	11	57	18
CQ2B50-□D	10~50	30.5	20	64	10.5	M10×1.5	15	86	7	17	8	50	6.6	11深8	1/4	10.5	71	22
CQ2B63-□D	10~50	36	20	77	10.5	M10×1.5	15	103	7	17	8	60	9	14深10.5	1/4	15	84	22
CQ2B80-□D	10~50	43.5	25	98	12.5	M16×2.0	21	132	6	22	10	77	11	17.5深13.5	3/8	16	104	26
CQ2B100-□D	10~50	53	30	117	13	M20×2.5	27	156	6.5	27	12	94	11	17.5深13.5	3/8	23	123.5	26

**长行程 | Length Stroke

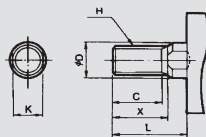
缸径/符号 Bore / Symbol	行程 (mm)	B	F	P	Q
32	75,100	33	7.5	1/8	10.5
40	75,100	39.5	8	1/8	11
50	75,100	40.5	10.5	1/4	10.5
63	75,100	46	10.5	1/4	15
80	75,100	53.5	12.5	3/8	16
100	75,100	63	13	3/8	23

*标准行程是每50mm相隔

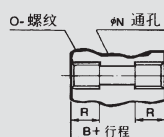
**行程由55mm至100mm之间的中间行程 (55,60,65,70,80,85,90,95), 加5,10,15或20mm厚的垫板

***除非有特别指明, 通孔型气缸尺寸和两端内螺纹气缸尺寸是一样

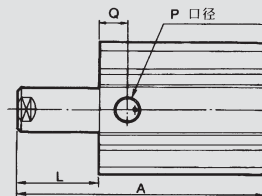
活塞杆外螺纹



两端内螺纹安装型/CQ2A



单动/弹簧压出 $\phi 12 \sim \phi 50$



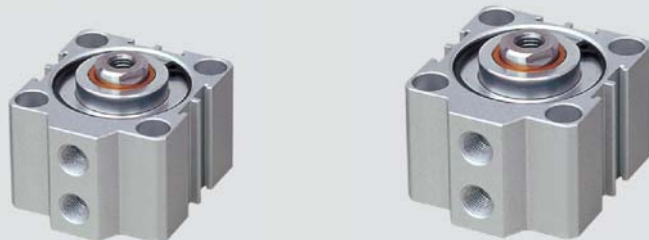
缸径 Bore	C	X	ϕD	H	L	K
12	9	10.5	6	M5×0.8	14	5
16	10	12	8	M6×1.0	15.5	6
20	12	14	10	M8×1.25	18.5	8
25	15	17.5	12	M10×1.25	22.5	10
32	20.5	23.5	16	M14×1.5	28.5	14
40	20.5	23.5	16	M14×1.5	28.5	14
50	26	28.5	20	M18×1.5	33.5	17
63	26	28.5	20	M18×1.5	33.5	17
80	32.5	35.5	25	M22×1.5	43.5	22
100	32.5	35.5	30	M26×1.5	43.5	27

缸径 Bore	R	O
12	7	M4×0.7
16	7	M4×0.7
20	10	M4×1.0
25	10	M6×1.0
32	10	M6×1.0
40	10	M6×1.0
50	14	M8×1.25
63	18	M10×1.5
80	22	M12×1.75
100	22	M12×1.75

缸径 Bore	A			L		
	5st	10st	20st	5st	10st	20st
12	30.5	40.5	-	8.5	13.5	-
16	32	42	-	8.5	13.5	-
20	34	44	-	9.5	14.5	-
25	37.5	47.5	-	10	15	-
32	40	50	-	12	17	-
40	46.5	56.5	-	12	17	-
50	-	58.5	78.5	-	18	28

**除非有特别指明, 通孔型气缸尺寸和两端内螺纹气缸尺寸是一样
注: st=行程

SDA薄型气缸 SDA Compact Cylinder



订购码 | Ordering Code

SDA	-	20	-	30	-	S
型号 Model		缸径 Bore Size		行程 Stroke		磁石代号 Magnet Code
SDA: 复动型 SSA: 单动伸出型 STA: 单动引入型 SDAD: 双轴型 SDA: Double Action SSA: Single Action (draw-out) STA: Single Action (drawing-in) SDAD: Double-shaft						S: 附磁石 空白: 不附磁石 S: Magnet inside Blank: Standard

规格 | Specification

内径 Bore (mm)	12	16	20	25	32	40	50	63	80	100
动作形式 Motion Pattern	复动型 Double Action									
工作介质 Working Medium	空气 Air									
使用压力范围 Operating Voltage Range	1.0~9.0 Kg/cm ²									
复动型 Double Action	2.0~9.0 Kg/cm ²									
单动型 Single Action	-									
保证耐压力 Ensured Pressure Resistance	10.5 Kg/cm ²									
使用温度范围 Operating Temperature Range	0~70℃									
使用速度范围 Operating Speed Range	30~500 mm/s									
复动型 Double Action	30~350 mm/s									
单动型 Single Action	30~250 mm/s									
接管口径 Joint Pipe Bore	M5×0.8									
	G1/8"									
	G1/4"									
	G3/8"									

行程 | Stroke

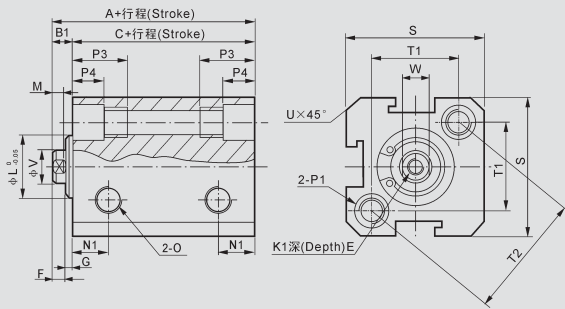
内径 Bore (mm)		12	16	20	25	32	40	50	63	80	100	
复动型 Double Action	不附磁 Not attach magnet	5~60 mm 每5mm一级 Every 5mm is grouped as one grade	5~85 mm 每5mm一级 Every 5mm is grouped as one grade	5~90 mm 每5mm一级 Every 5mm is grouped as one grade	100~110 mm 每5mm一级 Every 5mm is grouped as one grade	5~90 mm 每5mm一级 Every 5mm is grouped as one grade	5~90 mm 每5mm一级 Every 5mm is grouped as one grade	5~90 mm 每5mm一级 Every 5mm is grouped as one grade	5~90 mm 每5mm一级 Every 5mm is grouped as one grade	100~130 mm 每5mm一级 Every 5mm is grouped as one grade	100~130 mm 每5mm一级 Every 5mm is grouped as one grade	
	附磁型 Attach magnet	5~50 mm 每5mm一级 Every 5mm is grouped as one grade	5~75 mm 每5mm一级 Every 5mm is grouped as one grade	5~90 mm 每5mm一级 Every 5mm is grouped as one grade	100mm	5~90 mm 每5mm一级 Every 5mm is grouped as one grade	5~90 mm 每5mm一级 Every 5mm is grouped as one grade	5~90 mm 每5mm一级 Every 5mm is grouped as one grade	5~90 mm 每5mm一级 Every 5mm is grouped as one grade	5~90 mm 每5mm一级 Every 5mm is grouped as one grade	100~120 mm 每5mm一级 Every 5mm is grouped as one grade	100~120 mm 每5mm一级 Every 5mm is grouped as one grade
单动型 Single Action	不附磁 Not attach magnet	5~30 mm 每5mm一级 Every 5mm is grouped as one grade					5~30 mm 每5mm一级 Every 5mm is grouped as one grade	5~30 mm 每5mm一级 Every 5mm is grouped as one grade	5~30 mm 每5mm一级 Every 5mm is grouped as one grade	5~30 mm 每5mm一级 Every 5mm is grouped as one grade	-	-
	附磁型 Attach magnet	5~30 mm 每5mm一级 Every 5mm is grouped as one grade					5~30 mm 每5mm一级 Every 5mm is grouped as one grade	5~30 mm 每5mm一级 Every 5mm is grouped as one grade	5~30 mm 每5mm一级 Every 5mm is grouped as one grade	5~30 mm 每5mm一级 Every 5mm is grouped as one grade	-	-
最大行程 Max. Stroke		60mm	100mm	120mm	120mm	130mm	130mm	130mm	130mm	130mm	130mm	

SDA薄型气缸

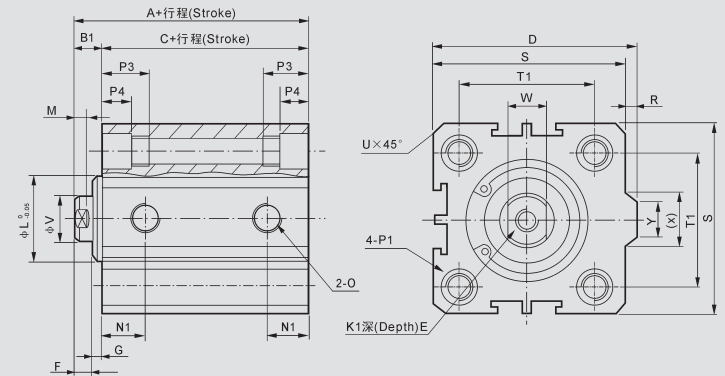
SDA Compact Cylinder

外形尺寸 | Overall Dimension

SDA12-16



SDA20-100



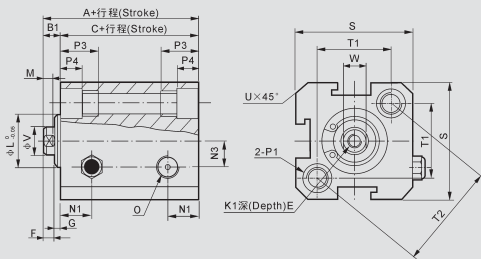
尺寸表 | Dimension sheet

型式 Type 内径/符号 Bore / Symbol	标准型 Standard type			附磁型 Attach magnet			B	E	F	G	K1	L	M	N1	N3	O	
	A	B1	C	A	B1	C											
12	22	5	17	32	5	27	-	6	4	1	M3×0.5	10.2	2.8	6.3	6	M5×0.8	
16	24	5.5	18.5	34	5.5	28.5	-	6	4	1.5	M3×0.5	11	2.8	7.3	6.5	M5×0.8	
20	25	5.5	19.5	35	5.5	29.5	36	8	4	1.5	M4×0.7	16	2.8	7.5	-	M5×0.8	
25	27	6	21	37	6	34	42	10	4	2	M5×0.8	17	2.8	8	-	M5×0.8	
32	31.5	7	24.5	41.5	7	34.5	50	12	4	3	M6×1	22	2.8	9	-	G1/8	
40	33	7	26	43	7	36	58.5	12	4	3	M8×1.25	28	2.8	10	-	G1/8	
50	37	9	28	47	9	38	71.5	15	5	4	M10×1.5	38	2.8	10.5	-	G1/4	
63	41	9	32	51	9	42	84.5	15	5	4	M10×1.5	40	2.8	11.8	-	G1/4	
80	52	11	41	62	11	51	104	15	6	5	M14×1.5	45	4	14.5	-	G3/8	
100	63	12	51	73	12	61	124	18	7	5	M18×1.5	55	4	20.5	-	G3/8	
内径/符号 Bore / Symbol	P1						P3	P4	R	S	T1	T2	U	V	W	X	Y
12	双边 : φ6.5 Double Side		牙 : M5×0.8 Cog		通孔 : φ4.2 Through Hole		12	4.5	-	25	16.2	23	1.6	6	5	-	-
16	双边 : φ6.5 Double Side		牙 : M5×0.8 Cog		通孔 : φ4.2 Through Hole		12	4.5	-	29	19.8	28	1.6	6	5	-	-
20	双边 : 6.5 Double Side		牙 : M5×0.8 Cog		通孔 : φ4.2 Through Hole		14	4.5	2	34	24	-	2.1	8	6	11.3	10
25	双边 : 8.2 Double Side		牙 : M6×1.0 Cog		通孔 : φ4.6 Through Hole		15	5.5	2	40	28	-	3.1	10	8	12	10
32	双边 : 8.2 Double Side		牙 : M6×1.0 Cog		通孔 : φ4.6 Through Hole		16	5.5	6	44	34	-	2.15	12	10	18.3	15
40	双边 : 10 Double Side				通孔 : φ6.5 Through Hole		20	7.5	6.5	52	40	-	2.25	16	14	21.3	16
50	双边 : 11 Double Side		牙 : M8×1.25 Cog		通孔 : φ6.5 Through Hole		25	8.5	9.5	62	48	-	4.15	20	17	30	20
63	双边 : 11 Double Side		牙 : M8×1.25 Cog		通孔 : φ6.5 Through Hole		25	8.5	9.5	75	60	-	3.15	20	17	28.7	20
80	双边 : 14 Double Side		牙 : M12×1.75 Cog		通孔 : φ9.2 Through Hole		25	10.5	10	94	74	-	3.65	25	22	36	26
100	双边 : 17.5 Double Side		牙 : M12×1.75 Cog		通孔 : φ11.3 Through Hole		30	13	10	114	90	-	3.65	32	27	35	26

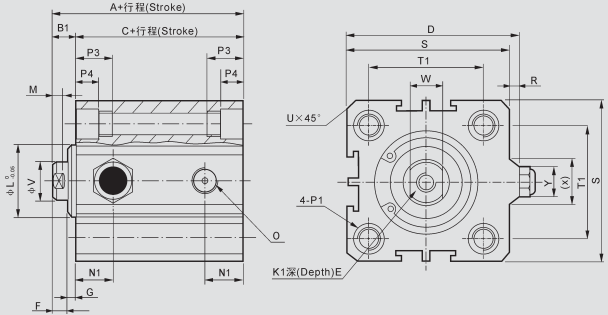
SDA薄型气缸 SDA Compact Cylinder

外形尺寸 | Overall Dimension

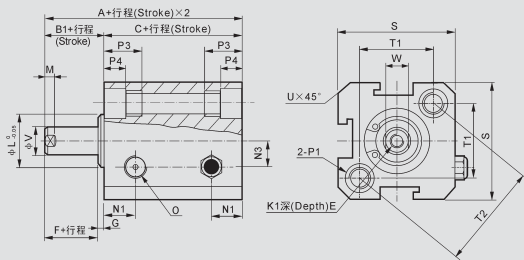
SSA12-16



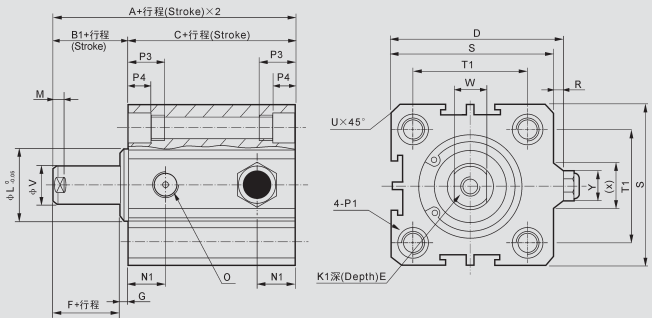
SSA20-40



STA12-16



STA20-40



尺寸表 | Dimension Sheet

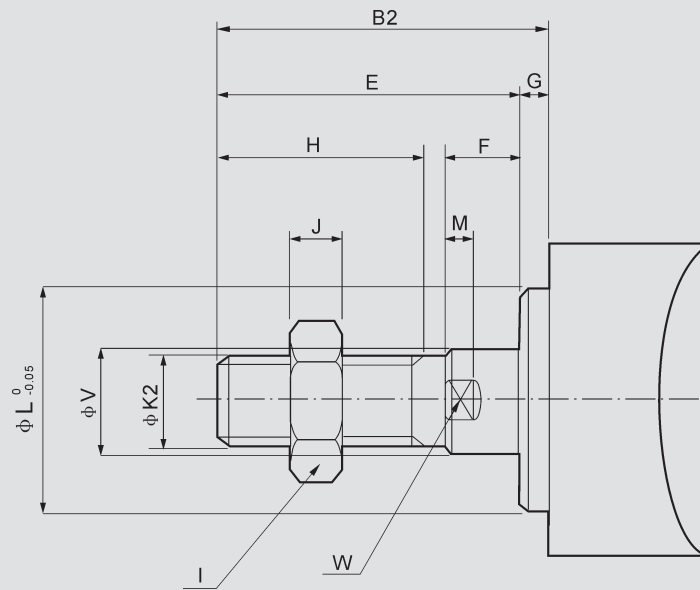
型式 Type	标准型 Standard type				附磁型 Attach magnet				D	E	F	G	K1	L	M	N1	N3			
	A		B1	C		A		B1										C		
内径 Bore / 符号 Symbol 行程 Stroke	≤10	>10		≤10	>10	≤10	>10		≤10	>10	≤10	>10								
12	32	42	5	27	37	42	52	5	37	47	-	6	4	1	M3×0.5	10.2	2.8	6.3	6	
16	34	44	5.5	28.5	38.5	44	54	5.5	38.5	48.5	-	6	4	1.5	M3×0.5	11	2.8	7.3	6.5	
20	35	45	5.5	29.5	39.5	45	55	5.5	39.5	49.5	36	8	4	1.5	M4×0.7	16	2.8	7.5	-	
25	37	47	6	34	41	47	57	6	41	51	42	10	4	2	M5×0.8	17	2.8	8	-	
32	41.5	51.5	7	34.5	44.5	51.5	61.5	7	44.5	54.5	50	12	4	3	M6×1	22	2.8	9	-	
40	43	53	7	36	46	53	63	7	46	56	58.5	12	4	3	M8×1.25	28	2.8	10	-	
内径/符号 Bore / Symbol	O		P1						P3		P4	R	S	T1	T2	U	V	W	X	Y
12	M5×0.8		双边: φ6.5 Double Side		牙: M5×0.8 Cog		通孔: φ4.2 Through Hole		12	4.5	-	25	16.2	23	1.6	6	5	-	-	
16	M5×0.8		双边: φ6.5 Double Side		牙: M5×0.8 Cog		通孔: φ4.2 Through Hole		12	4.5	-	29	19.8	28	1.6	6	5	-	-	
20	M5×0.8		双边: φ6.5 Double Side		牙: M5×0.8 Cog		通孔: φ4.2 Through Hole		14	4.5	2	34	24	-	2.1	8	6	11.3	10	
25	M5×0.8		双边: φ8.2 Double Side		牙: M6×1.0 Cog		通孔: φ4.6 Through Hole		15	5.5	2	40	28	-	3.1	10	8	12	10	
32	G1/8		双边: φ8.2 Double Side		牙: M6×1.0 Cog		通孔: φ4.6 Through Hole		16	5.5	6	44	34	-	2.15	12	10	18.3	15	
40	G1/8		双边: φ10 Double Side		牙: M8×1.25 Cog		通孔: φ6.5 Through Hole		20	7.5	6.5	52	40	-	2.25	16	14	21.3	16	

SDA薄型气缸

SDA Compact Cylinder

外牙尺寸 | Cog Dimension

SDA,SSA,STA

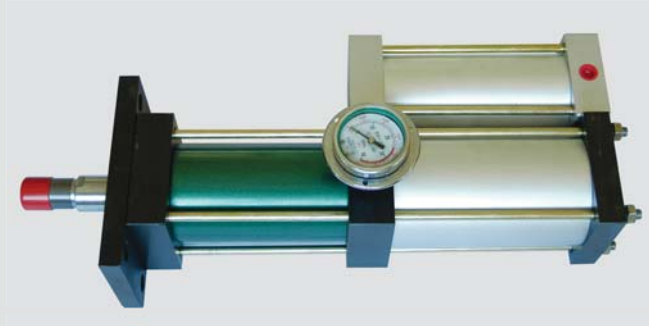


尺寸表 | Dimension Sheet

内径/符号 Bore / Symbol	B2	E	F	G	H	I	J	K2	L	M	V	W
12	17	16	4	1	10	8	4	M5×0.8	10.2	2.8	6	5
16	17.5	16	4	1.5	10	8	4	M5×0.8	11	2.8	6	5
20	20.5	19	4	1.5	13	10	5	M6×1.0	16	2.8	8	6
25	23	21	4	2	15	12	6	M10×1.25	17	2.8	10	8
32	25	22	4	3	15	17	6	M14×1.5	22	2.8	12	10
40	35	32	4	3	25	19	8	M18×1.5	28	2.8	16	14
50	37	33	5	4	25	27	11	M18×1.5	38	2.8	20	17
63	37	33	5	4	25	27	11	M22×1.5	40	2.8	20	17
80	44	39	6	5	30	32	13	M22×1.5	45	4	25	22
100	50	45	7	5	35	36	13	M26×1.5	55	4	32	27

CPT系列标准型增压缸

CPT Series Booster Cylinder (Hydraulic pneumatic cylinder)



订购码 | Ordering Code

CPT	-	63	-	100	-	20	-	3T
系列 标准型增压缸 Model Booster cylinder		缸径 Bore Size 1T: 63mm 3T: 63mm 5T: 80mm 10T: 80mm 13T: 100mm 15T: 125mm 20T: 125mm 30T: 125mm 40T: 160mm		总行程 Total Stroke 50: 50mm 100: 100mm 150: 150mm 200: 200mm		力行程 Power Stroke 5: 5mm 10: 10mm 15: 15mm 20: 20mm		总出力 Total Output Power 1: 1T 3: 3T 5: 5T 10: 10T 13: 13T 15: 15T 20: 20T 30: 30T 40: 40T

规格 | Specification

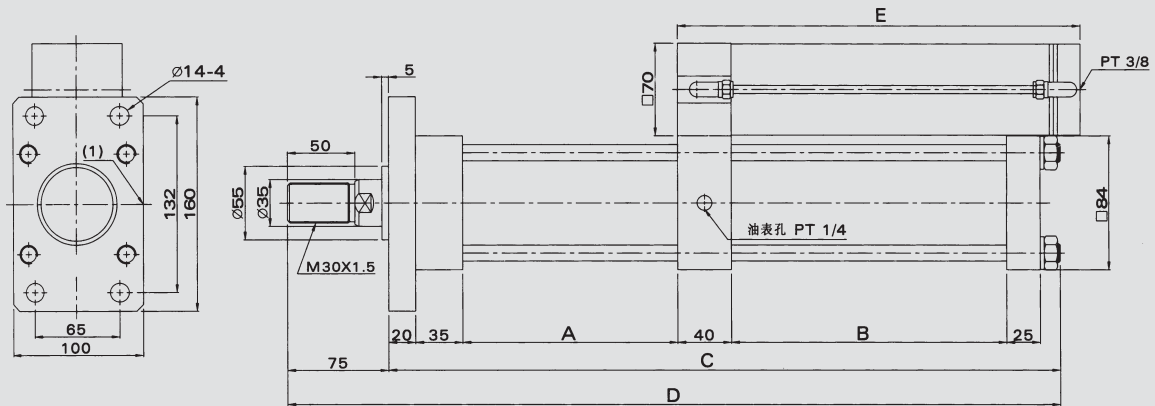
系列 Series	CPT (标准型增压缸系列) CPT(Standard Type Pressurize Cylinder Series)
动作形式 Motion Pattern	复动 Double Action
动作压力 Motion Pressure	0.2~0.7MPa 经过滤的干燥压缩空气 (After Filter Dry Compressed Air)
循环油 Circulating Oil	ISO VG68
环境温度 Working Temperature	-5~60℃ 其余工作温度需订制 (Other, Needs Custom-Made)
操作速度 Operating Speed	50~700mm/s
油缸保证压力 Hydrocylinder Ensure Pressure	30MPa
气缸保证压力 Air Cylinder Ensure Pressure	1.5MPa
行程公差 Margin of Stroke Error (mm)	+1.0 0
工作频率 Operating Frequency	10Times/ Min (10次每分钟)

CPT系列标准型增压缸

CPT Series Booster Cylinder (Hydraulic pneumatic cylinder)

外形尺寸 | Overall Dimension

CPT-1T,CPT-3T



气压孔(Air Pressure Hole) PT3/8-3

尺寸表 | Dimension Sheet

总行程 Total Stroke	增压行程 Pressurize Stroke	A	B	C	D	E	总行程 Total Stroke	增压行程 Pressurize Stroke	A	B	C	D	E
50	5	110	110	355	430	260	50	15	110	205	450	525	260
100	5	160	110	405	480	310	100	15	160	205	500	575	310
150	5	210	110	455	530	340	150	15	210	205	550	625	340
200	5	260	110	505	580	410	200	15	260	205	600	675	410
50	10	110	160	405	480	260	50	20	110	255	500	575	260
100	10	160	160	455	530	310	100	20	160	255	550	625	310
150	10	210	160	505	580	340	150	20	210	255	600	675	340
200	10	260	160	555	630	410	200	20	260	255	650	725	410

理论出力 | Theory Output Power

操作压力 Kg/cm ² Operating Pressure	1	2	3	4	5	6	7
预压出力 Kg Beforehand Press Output Pressure	30	60	90	120	150	180	210
增压出力 Kg Pressurize Output Pressure	300	600	900	1250	1550	1850	2150
回程拉力 Kg backhaul Pull	20	40	60	80	100	120	140

理论出力 | Theory Output Power

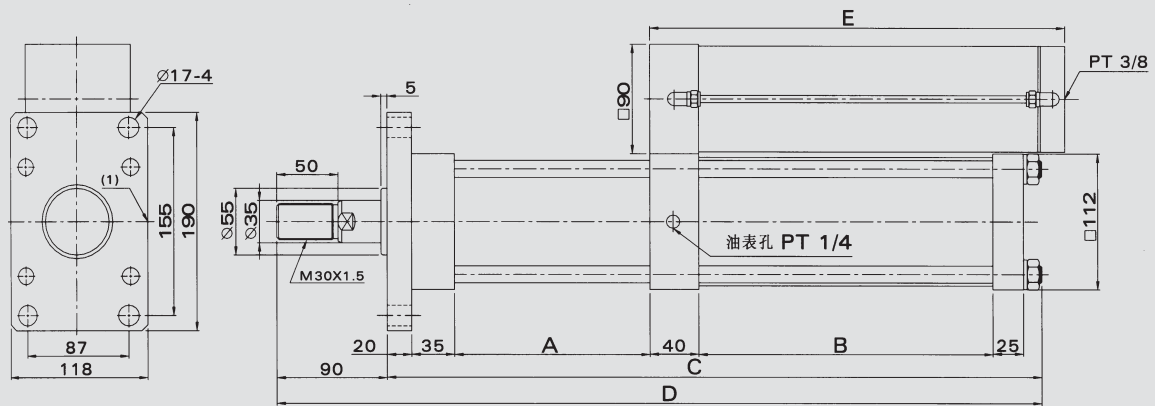
操作压力 Kg/cm ² Operating Pressure	1	2	3	4	5	6	7
预压出力 Kg Beforehand Press Output Pressure	30	60	90	120	150	180	210
增压出力 Kg Pressurize Output Pressure	500	1000	1500	2000	2500	3000	3500
回程拉力 Kg backhaul Pull	20	40	60	80	100	120	140

CPT系列标准型增压缸

CPT Series Booster Cylinder (Hydraulic pneumatic cylinder)

外形尺寸 | Overall Dimension

CPT-5T



气压孔(Air Pressure Hole) PT3/8-3

尺寸表 | Dimension Sheet

总行程 Total Stroke	增压行程 Pressurize Stroke	A	B	C	D	E	总行程 Total Stroke	增压行程 Pressurize Stroke	A	B	C	D	E
50	5	110	121	366	456	280	50	15	110	241	486	576	280
100	5	160	121	416	506	340	100	15	160	241	536	626	340
150	5	210	121	466	556	380	150	15	210	241	586	676	380
200	5	260	121	516	606	420	200	15	260	241	636	726	420
50	10	110	181	426	516	280	50	20	110	301	546	636	280
100	10	160	181	476	566	340	100	20	160	301	596	686	340
150	10	210	181	526	616	380	150	20	210	301	646	736	380
200	10	260	181	576	666	420	200	20	260	301	696	786	420

理论出力 | Theory Output Power

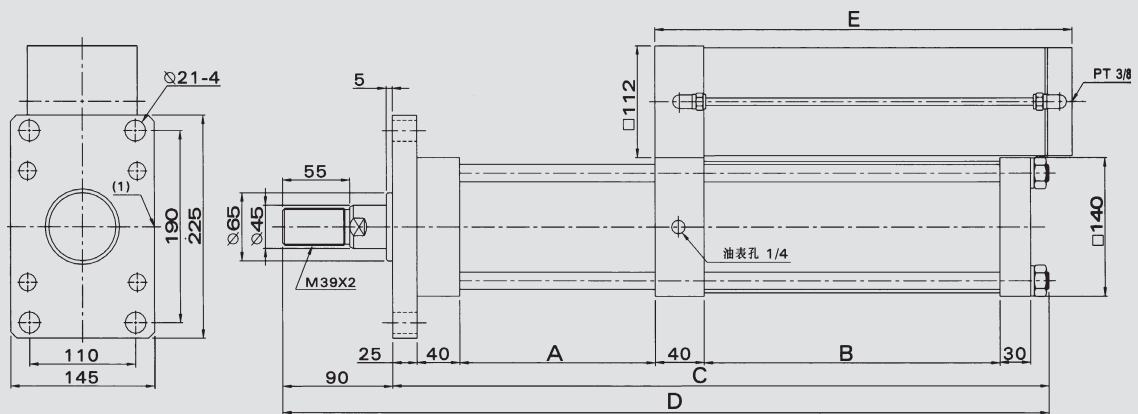
操作压力 Kg/cm ² Operating Pressure	1	2	3	4	5	6	7
预压出力 Kg Beforehand Press Output Pressure	50	100	150	200	250	300	350
增压出力 Kg Pressurize Output Pressure	1000	2000	3000	4000	5000	6000	7000
回程拉力 Kg backhaul Pull	40	80	120	160	200	1240	280

CPT系列标准型增压缸

CPT Series Booster Cylinder (Hydraulic pneumatic cylinder)

外形尺寸 | Overall Dimension

CPT-10T



气压孔(Air Pressure Hole) PT1/2-3

尺寸表 | Dimension Sheet

总行程 Total Stroke	增压行程 Pressurize Stroke	A	B	C	D	E	总行程 Total Stroke	增压行程 Pressurize Stroke	A	B	C	D	E
50	5	120	121	391	430	280	50	15	120	241	511	601	280
100	5	170	121	441	480	340	100	15	170	241	561	651	340
150	5	220	121	491	530	380	150	15	220	241	611	701	380
200	5	270	121	541	580	420	200	15	270	241	661	751	420
50	10	120	181	451	541	280	50	20	120	301	571	661	280
100	10	170	181	501	591	340	100	20	170	301	621	711	340
150	10	220	181	551	641	380	150	20	220	301	671	761	380
200	10	270	181	601	691	420	200	20	270	301	721	811	420

理论出力 | Theory Output Power

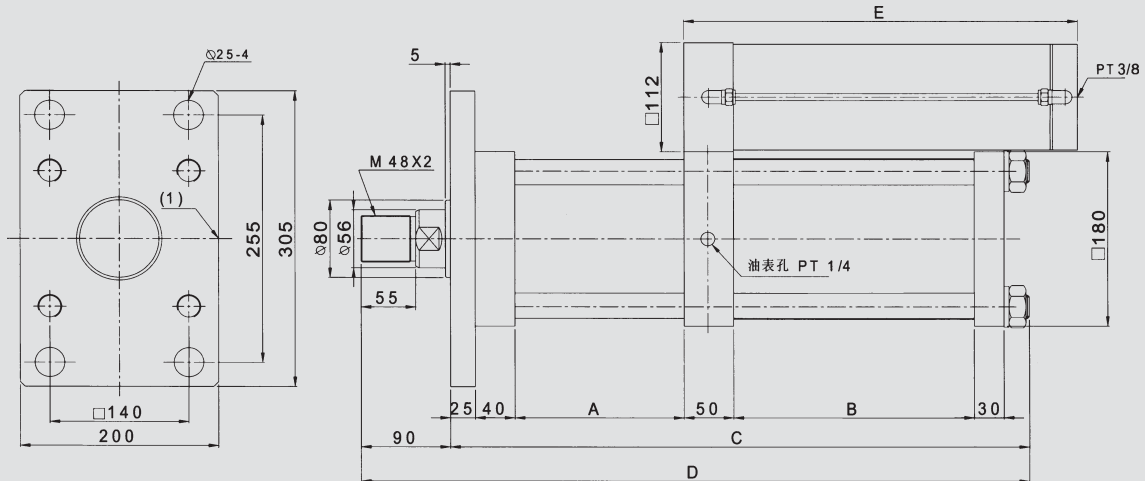
操作压力 Kg/cm ² Operating Pressure	1	2	3	4	5	6	7
预压出力 Kg Beforehand Press Output Pressure	78	156	234	312	390	468	546
增压出力 Kg Pressurize Output Pressure	1560	3120	4680	6240	7800	9360	10920
回程拉力 Kg backhaul Pull	60	120	180	240	300	360	420

CPT系列标准型增压缸

CPT Series Booster Cylinder (Hydraulic pneumatic cylinder)

外形尺寸 | Overall Dimension

CPT-15T



气压孔(Air Pressure Hole) PT1/2-3

尺寸表 | Dimension Sheet

总行程 Total Stroke	增压行程 Pressurize Stroke	A	B	C	D	E	总行程 Total Stroke	增压行程 Pressurize Stroke	A	B	C	D	E
50	5	120	131	411	501	280	50	15	120	251	531	621	280
100	5	170	131	461	551	340	100	15	170	251	581	671	340
150	5	220	131	511	601	380	150	15	220	251	631	721	380
200	5	270	131	561	651	420	200	15	270	251	681	771	420
50	10	120	191	471	561	280	50	20	120	311	591	681	280
100	10	170	191	521	611	340	100	20	170	311	641	731	340
150	10	220	191	571	661	380	150	20	220	311	691	781	380
200	10	270	191	621	711	420	200	20	270	311	741	831	420

理论出力 | Theory Output Power

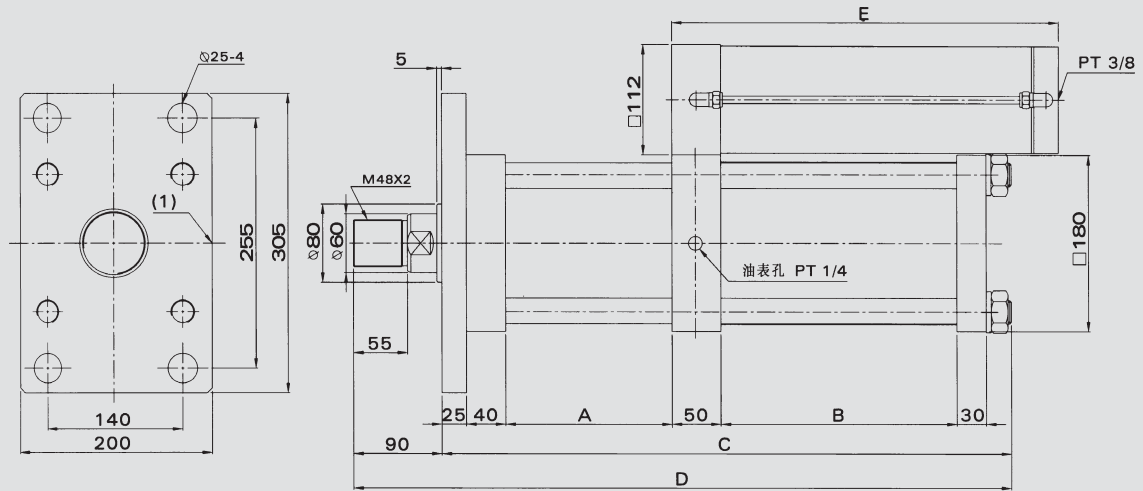
操作压力 Kg/cm ² Operating Pressure	1	2	3	4	5	6	7
预压出力 Kg Beforehand Press Output Pressure	120	240	360	480	600	720	840
增压出力 Kg Pressurize Output Pressure	2560	5120	7680	10240	12800	15350	17900
回程拉力 Kg backhaul Pull	90	180	270	360	450	540	630

CPT系列标准型增压缸

CPT Series Booster Cylinder (Hydraulic pneumatic cylinder)

外形尺寸 | Overall Dimension

CPT-20T



气压孔(Air Pressure Hole) PT1/2-3

尺寸表 | Dimension Sheet

总行程 Total Stroke	增压行程 Pressurize Stroke	A	B	C	D	E	总行程 Total Stroke	增压行程 Pressurize Stroke	A	B	C	D	E
50	5	120	151	431	521	280	50	15	120	311	611	701	280
100	5	170	151	781	571	340	100	15	170	311	661	751	340
150	5	220	151	531	621	380	150	15	220	311	711	801	380
200	5	270	151	581	671	420	200	15	270	311	761	851	420
50	10	120	241	521	611	280	50	20	120	421	701	791	280
100	10	170	241	571	661	340	100	20	170	421	751	841	340
150	10	220	241	621	711	380	150	20	220	421	801	891	380
200	10	270	241	671	761	420	200	20	270	421	851	941	420

理论出力 | Theory Output Power

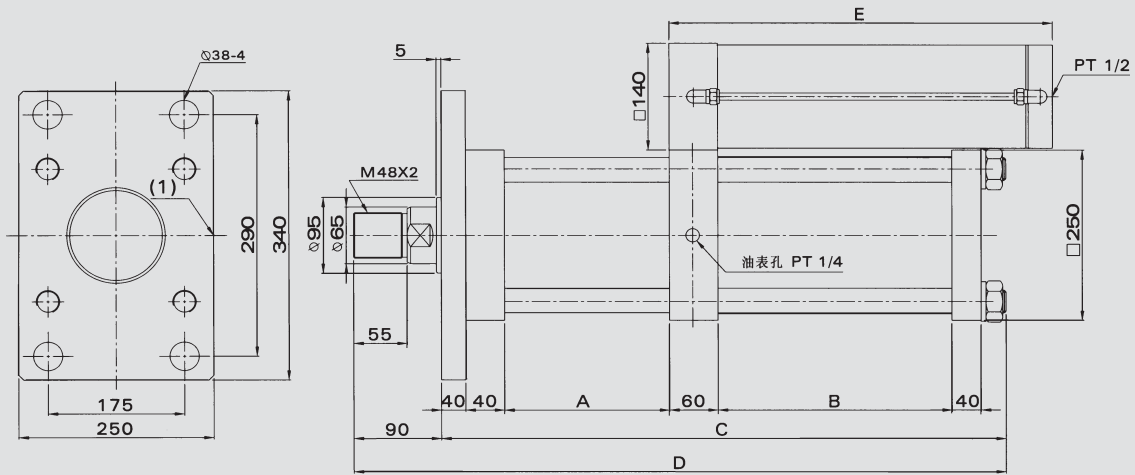
操作压力 Kg/cm ² Operating Pressure	1	2	3	4	5	6	7
预压出力 Kg Beforehand Press Output Pressure	120	240	360	480	600	720	840
增压出力 Kg Pressurize Output Pressure	3500	7000	10500	14000	17500	21000	24500
回程拉力 Kg backhaul Pull	90	180	270	360	450	540	630

CPT系列标准型增压缸

CPT Series Booster Cylinder (Hydraulic pneumatic cylinder)

外形尺寸 | Overall Dimension

CPT-40T



气压孔(Air Pressure Hole) PT1/2-3

尺寸表 | Dimension Sheet

总行程 Total Stroke	增压行程 Pressurize Stroke	A	B	C	D	E	总行程 Total Stroke	增压行程 Pressurize Stroke	A	B	C	D	E
50	5	130	171	496	586	280	50	15	130	381	706	796	280
100	5	180	171	546	636	340	100	15	180	381	756	846	340
150	5	230	171	596	686	380	150	15	230	381	806	896	380
200	5	280	171	646	736	420	200	15	280	381	856	946	420
50	10	130	276	601	691	280	50	20	130	486	811	901	280
100	10	180	276	651	741	340	100	20	180	486	861	951	340
150	10	230	276	701	791	380	150	20	230	486	911	1001	380
200	10	280	276	751	841	420	200	20	280	486	961	1051	420

理论出力 | Theory Output Power

操作压力 Kg/cm ² Operating Pressure	1	2	3	4	5	6	7
预压出力 Kg Beforehand Press Output Pressure	200	400	600	800	1000	1200	1400
增压出力 Kg Pressurize Output Pressure	6500	13000	19500	26000	32500	39000	46000
回程拉力 Kg backhaul Pull	162	330	495	660	825	990	1155

CGCW系列磁性无活塞杆气缸 CGCW Series Rodless Cylinder



订购码 | Ordering Code

CGCW	SB	40	X	600	A	2	-	H	2
型号 CGCW: 标准型 CGCWR: 带开关型 Model CGCW: Standard Type CGCWR: With Switch Type	结构形式 SD: 基本型 SA: 单导杆型 SB: 双导杆型 Structure Type SD: Basic Type SA: Single leader Type SB: double leader Type	缸径 Bore size		行程 Stroke	缓冲器 Buffer φ 20, φ 25: HCH-11412 φ 32, φ 40: HCH-12015	缓冲器数量 Buffer Amount		开关代号 Switch Code E:SR101 F:SR201 G:SR301 H:SR401	开关数量 Switch Amount

特点 | Features

- 1、轴口空间小，特别适用于行程长而安装距离短的场所。
 - 2、无外部泄漏，无污染周围环境。
 - 3、可直接搬送荷重，结构简单、安装方便。
 - 4、替代进口同类产品，广泛应用于塑机，纺织各种自动化机械设备中。
1. Small axle port specially suits occasions of long travel and short installation distance.
 2. No external leak and no pollution of surrounding environment.
 3. Load directly conveyable, simple structure and easy installation.
 4. Substitute for imported similar products, widely applied in plastic machinery, textile and various automation machinery equipment.

规格 | Specification

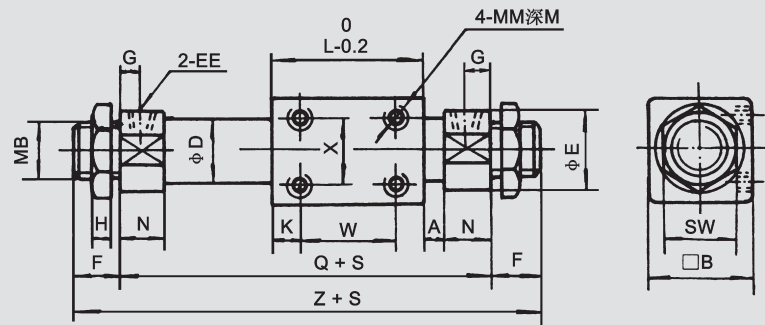
型号 Model	标准型							
	CGCW		SD,SA,SB		CGCWR		SA,SB	
内径 Bore (mm)	φ 20、φ 25、φ 32、φ 40							
最大行程 Max. Stroke	-	-	φ 20	φ 25	φ 32	φ 40	-	-
	-	-	1500	2000	2500	3000	-	-
工作压力范围 Operating Pressure Range	SD: 0.15~0.63 MPa SA,SB: 0.2~0.63 MPa							
耐压力 Pressure Resistance	0.945MPa							
使用速度范围 Operating Speed Range	200~700mm/s							
使用温度范围 Operating Temperature Range	-10~ +80℃ (但在不冻结条件下 Not freeze Condition)							
工作介质 Working Medium	净化、干燥压缩空气 Depurate, Desiccation Compress Air							
给油 Supply Oil	SD: 两侧缓冲垫片 Buffer Spacer for two side, SA,SB: 两侧缓冲垫片+ 缓冲器 Buffer Spacer + Buffer for two side							
缓冲机构 Buffer Setup	不需要 Not Necessary							
磁铁保持力 magnet retentiveness	-	-	220	340	560	880	-	-
活塞脱离压力 Piston Disengage Pressure	-	-	0.7	0.7	0.7	0.7	-	-

CGCW系列磁性无活塞杆气缸

CGCW Series Rodless Cylinder

外形尺寸 | Overall Dimension

CGCW SD (基本型 Basic Type)

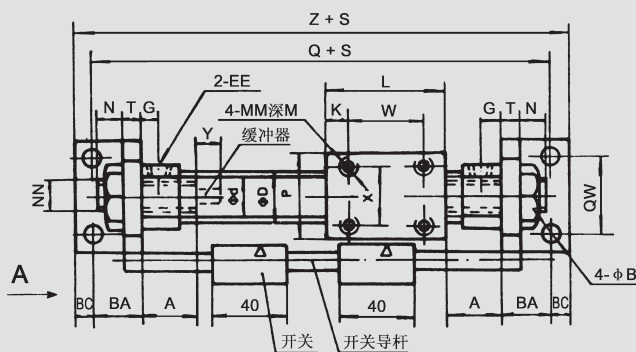


尺寸表 | Dimension Sheet

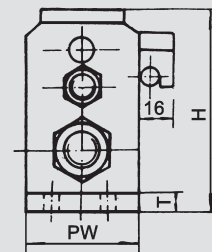
缸径 Bore	D	A	B	E	EE	F	G	H	K	L	M	MB	M M	N	Q	SW	W	X	Z
φ20	23	6	45	28	G1/8"	14	8	7	11	62	8	M22×1.5	M5	16	104	30	40	30	134
φ25	28	6	50	34	G1/8"	14	8	7	10	70	8	M22×1.5	M5	16	113	30	50	30	143
φ32	32	7	60	40	G1/8"	15	8	8	15	80	10	M24×2	M6	16	125	32	50	40	157
φ40	44	7	70	49	G1/4"	18	10	9	12	84	10	M30×2	M6	22	139	41	60	40	179

CGCW SA (单导杆型 Single Leader Type)

CGCWR SA (带开关单导杆型 Single Leader Type With Switch)



A 向旋转



缸径 Bore	D	d	A	B	BA	BC	EE	G	H	K	L	M	M M	N	NN	P	PW	Q	QW	T	W	X	Y	Z
φ20	23	16	19.5	6.5	15	10	G1/8"	8	106	11	62	8	M5	66.5	M14×1.5	40	50	156	40	3.2	40	30	12	176
φ25	28	20	20	6.5	15	10	G1/8"	8	114	10	70	8	M5	66.5	M14×1.5	45	55	165	40	3.2	50	30	12	185
φ32	36	20	22	6.5	26	10	G1/8"	8	140	15	80	10	M6	81	M20×1.5	60	70	177	45	4	50	40	15	192
φ40	44	25	27	6.5	26	10	G1/4"	10	160	12	84	10	M6	76	M20×1.5	70	80	191	50	4.5	60	40	15	211

CGCW系列磁性无活塞杆气缸 CGCW Series Rodless Cylinder

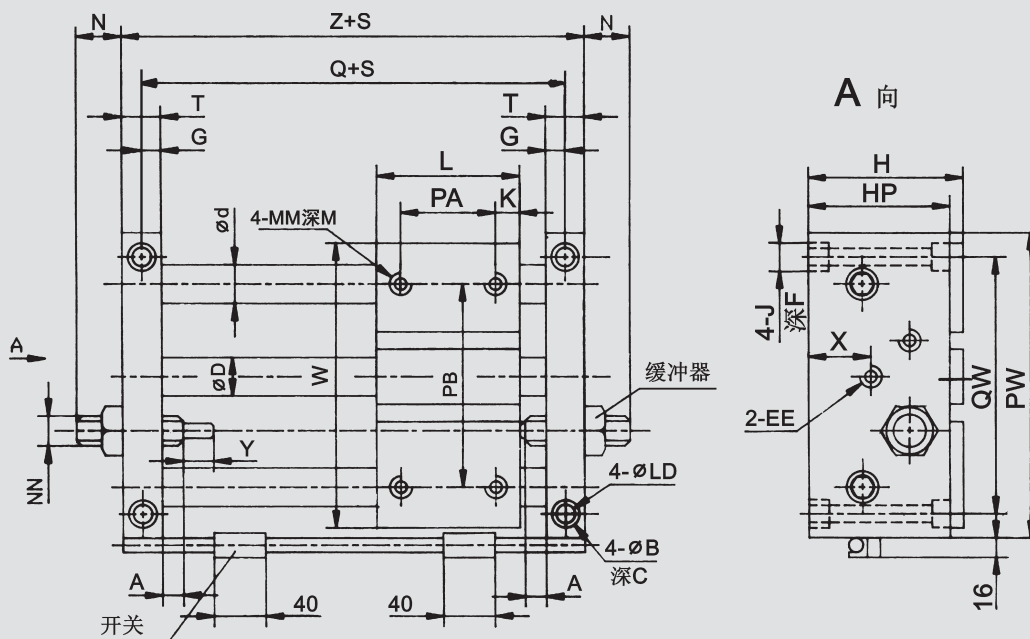
外形尺寸 | Overall Dimension

CGCW

SB (双导杆型 Double Leader Type)

CGCWR

SB (带开关双导杆型 Double Leader Type With Switch)



尺寸表 | Dimension Sheet

缸径 Bore	D	d	A	B	C	EE	F	G	H	HP	J	K	L	LD
φ20	23	16	5	14	9	G1/8"	15	10	54	51	M10	17	62	8.7
φ25	28	20	5	14	9	G1/8"	15	10	56	53	M10	15	70	8.7
φ32	36	20	6.5	14	9	G1/8"	15	12	66	63	M10	15	80	8.7
φ40	44	25	6.5	14	9	G1/4"	15	12	76	73	M10	17	84	8.7
缸径 Bore	M	MM	N	NN	PA	PB	PW	Q	QW	T	W	X	Y	Z
φ20	10	M6	70	M14×1.5	40	80	133	94	110	20	123	23.5	12	114
φ25	10	M6	70	M14×1.5	40	90	148	103	125	20	138	26	12	123
φ32	12	M8	80.5	M20×1.5	50	105	163	119	140	24	153	32	15	143
φ40	12	M8	80.5	M20×1.5	50	115	173	123	150	24	163	38	15	147

气动执行器 (旋转气缸)

Pneumatic Actuator (Rotary Cylinder)



订购码 | Ordering Code



双作用旋转气缸输出力矩 | Double Action Rotary Cylinder Output Moment

型号 Type	输入气源压力 Output Air Source Prussure (BAR)								
	2	3	4	5	6	7	8	9	10
DA-32	2.3	3.5	4.7	5.9	7.7	8.2	9.4	9.7	11.8
DA-45	5.8	8.7	11.6	14.6	17.5	20.4	23.3	26.3	29.2
DA-63(60)	13.9	20.9	27.9	34.9	41.9	48.9	55.9	62.8	69.8
DA-83(85)	30.2	45.3	60.4	75.5	90.6	105.7	120.8	135.9	151
DA-105	50.9	76.4	101.9	127.3	152.8	178.3	203.8	229.3	254.7
DA-125	99	148	198	248	297	347	397	446	496
DA-140	166	249	332	415	498	581	664	747	830
DA-160	253	379	506	633	759	886	1012	1139	1266
DA-210	552	828	1104	1380	1656	1932	2208	2484	2760
DA-270	927	1390	1854	2317	2781	3244	3708	4171	4635
DA-300	1270	1906	2541	3177	3812	4447	5083	5718	6354
DA-350	1920	2853	3805	4756	5707	6659	7610	8561	9513
DA-400	2712	4068	5425	6781	8137	9494	10850	12206	13563

气动执行器 (旋转气缸)

Pneumatic Actuator (Rotary Cylinder)

单作用旋转气缸输出力矩 | Single Action Rotary Cylinder Output Moment

型号 Type	弹簧数量 (单侧) Spring Number (Unilateral)	弹簧数量 (单侧)												弹簧输出力矩	
		3		4		5		6		7		8		Spring Output Moment	
		0°	90°	0°	90°	0°	90°	0°	90°	0°	90°	0°	90°	0°	90°
SR-45	3	4.7	2.2	7.6	5.1	10.6	8.1	13.5	11	16.4	13.9	19.3	16.8	4	6.5
	4			6.2	2.9	9.2	5.9	12.1	8.8	11.5	11.7	17.9	14.6	5.4	8.7
	5					7.8	3.7	10.7	6.6	13.6	9.5	16.5	12.4	6.8	10.9
	6							9.4	4.5	12.3	7.4	15.2	10.3	8.1	13
SR-63(60)	3	13.3	5.5	20.3	12.5	27.3	19.5	34.3	26.5	41.3	33.5	48.3	40.5	7.6	15.4
	4			17.7	7.3	24.7	14.3	31.7	21.3	38.7	28.3	45.7	35.3	10.2	20.6
	5					22.2	9.2	29.2	16.2	36.2	23.2	43.2	30.2	12.7	25.7
	6							26.6	11	33.6	18	40.6	25	15.3	30.9
SR-83(85)	3	26.4	14.4	41.5	29.5	56.6	44.6	71.7	59.7	86.8	74.8	101	89.9	18.9	30.9
	4			35.2	19.2	20.3	34.3	65.4	49.4	80.5	64.5	95.7	79.6	25.2	41.2
	5					44	23.9	59.1	39	74.2	54.1	89.3	69.2	31.5	51.6
	6							52.8	28.7	67.9	43.8	83	58.9	37.8	61.9
SR-105	3	37.3	11.5	62.8	37	88.2	62.4	113	87.9	139	113	164	138	39.1	64.9
	4			49.8	15.3	75.2	40.7	100	66.2	126	91.7	151	117	52.1	86.6
	5					62.2	19.3	87.7	44.8	113	70.3	138	95.8	65.1	108
	6							74.6	23.8	100	49.3	125	74.8	78.2	129
SR-125	3	74.4	19	124	69	174	119	223	168	274	218	324	268	73.6	129
	4			99.8	26	149	76	199	125	249	175	299	225	98.2	172
	5					126	33	175	82	225	132	275	182	122	215
	6							150	39	200	89	250	139	147	258
SR-140	3	158	39	241	122	324	205	407	288	490	371	573	454	91.3	210
	4			211	51	294	134	377	217	460	300	543	383	121	281
	5					263	64	346	147	429	230	512	313	152	351
	6							316	77	399	160	482	243	182	421
SR-160	3	207	29	334	156	461	283	587	409	714	536	840	662	172	350
	4			276	39	403	166	529	292	656	419	782	545	230	467
	5					345	49	471	175	598	302	724	428	288	584
	6							414	59	541	186	667	312	345	700
SR-210	3	532	127	808	403	1084	479	1360	955	1636	1231	1912	1507	296	701
	4			709	169	985	445	1261	721	1537	997	1813	1273	395	935
	5					886	211	1162	487	1438	763	1714	1039	494	1169
	6							1063	253	1339	529	1615	805	593	1403
SR-270	3	810	51	1274	515	1791	1032	2201	1442	2664	1905	3128	2369	580	1339
	4			1080	69	1597	586	2007	996	2470	1459	2934	1923	774	1785
	5					1404	139	1814	549	2277	1012	2741	1476	967	2232
	6							1621	103	2084	566	2548	1030	1160	2678
SR-300	3	1096	292	1731	927	2367	1563	3002	2198	3637	2833	4273	3469	810	1614
	4			1461	389	2097	1025	2732	1660	3367	2295	4003	2931	1080	2152
	5					1827	487	2462	1122	3097	1757	3733	2393	1350	2690
	6							2192	584	2827	1219	3463	1855	1620	3228
SR-350	3	1733	405	2725	1357	3676	2308	4627	3259	5597	4211	6530	5162	1080	2418
	4			2365	541	3316	1492	4267	2443	5219	3395	6170	4346	1440	3264
	5					2956	676	3907	1627	4859	2579	5810	3530	1800	4080
	6							3047	811	3999	1763	4950	2714	2660	4896
SR-400	3	2418	564	3775	1921	5131	3277	6487	4633	7844	5990	9200	7346	1650	3504
	4			3225	753	4581	2109	5937	3465	7294	4822	8650	6178	2200	4672
	5					4031	941	5387	2297	6744	3654	8100	5010	2750	5840
	6							4837	1129	6194	2486	7550	3842	3300	7008

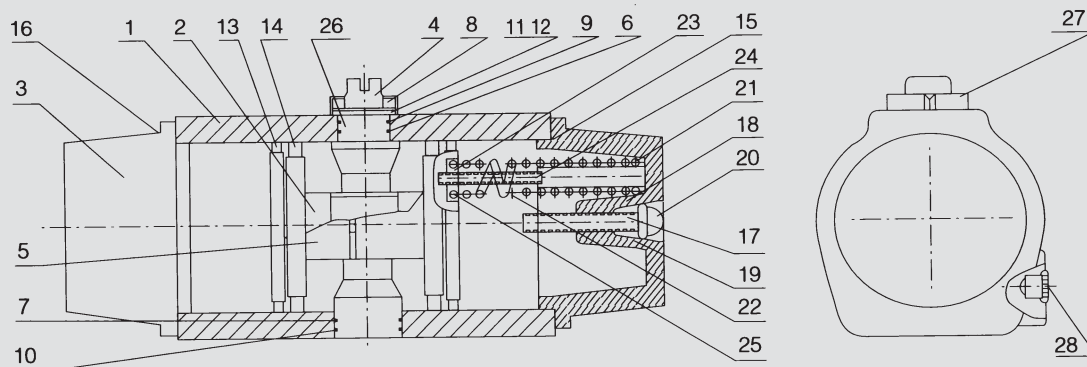
注: 1. 弹簧输出力矩是指在失力的情况下, 弹簧在行程处于0度和90度时的执行机构输出力矩;
2. 执行机构两端可根据需要放置数量不等的弹簧, 如在一端放置3个, 另一端放置4个, 表示为3+4

气动执行器 (旋转气缸)

Pneumatic Actuator (Rotary Cylinder)

A系列旋转气缸 | A Series Rotary Cylinder

零件及材料 | Parts & Material



序号 No	名称 Name	数量 Number	材料 Material
1	缸体 Cylinder Body	1	不锈钢. 压铸铝 Stainless Steel, Aluminum Die Casting
2	活塞 Piston	2	不锈钢. 压铸铝 Stainless Steel, Aluminum Die Casting
3	端盖 (片盖) End cover	2	不锈钢. 压铸铝 Stainless Steel, Aluminum Die Casting
4	轴 axis	1	不锈钢. 锻钢 Stainless Steel, Aluminum Die Casting
5	活塞导板 Piston Slipper guide	2	尼龙6 Nylon 6
6	上轴支承圈 Top Roll Supporting Ring	1	聚四氟乙烯 Polytetrafluoroethylene
7	下轴支承圈 Bottom Roll Supporting Ring	1	聚四氟乙烯 Polytetrafluoroethylene
8	弹性挡圈 Elasticity Closing Ring	1	不锈钢 Stainless Steel
9	上轴“O”型圈 Top Roll “O” Ring	1	氟橡胶. 丁晴橡胶 Fluoroelastomer, Buna N
10	下轴“O”型圈 Bottom Roll “O” Ring	1	氟橡胶. 丁晴橡胶 Fluoroelastomer, Buna N
11	不锈钢垫片 Stainless Steel Spacer	1	不锈钢 Stainless Steel
12	垫片 Spacer	1	聚四氟乙烯 Polytetrafluoroethylene
13	活塞支承圈 Piston Supporting Ring	2	聚四氟乙烯 Polytetrafluoroethylene
14	活塞“O”型圈 Piston “O” Ring	2	氟橡胶. 丁晴橡胶 Fluoroelastomer, Buna N
15	端盖“O”型圈 End cover “O” Ring	2	氟橡胶. 丁晴橡胶 Fluoroelastomer, Buna N

序号 No	名称 Name	数量 Number	材料 Material
16a	端盖紧固螺杆 End cover Fasten Screw	8	不锈钢 Stainless Steel
16b	端盖紧固弹簧垫圈 End cover Spring Spacer	8	不锈钢 Stainless Steel
17	调节螺杆 Adjust Screw	2	不锈钢 Stainless Steel
18	调节螺杆“O”型圈 Adjust Screw “O” Ring	2	氟橡胶. 丁晴橡胶 Fluoroelastomer, Buna N
19a	调节螺杆垫片 Adjust Screw Spacer	2	不锈钢 Stainless Steel
19b	调节螺杆螺帽 Adjust Screw Cap	2	不锈钢 Stainless Steel
20	圆头螺帽 Round Head Screw Cap	2	不锈钢 Stainless Steel
21	弹簧短套 Spring Short Cover	*	尼龙6 Nylon 6
22	弹簧长套 Spring Long Cover	*	尼龙6 Nylon 6
23	弹簧 Bottom Roll “O” Ring	*	65锰 65 Manganese
24	弹簧螺丝 Spring Screw	*	不锈钢 Stainless Steel
25	弹簧螺帽 Spring Screw Cap	*	不锈钢 Stainless Steel
26	垫片 Spacer	1	聚四氟乙烯 Polytetrafluoroethylene
27	指示器 Indicator	1	塑料 Plastic
28	塞头 Choke Plug	2	橡胶 Rubber

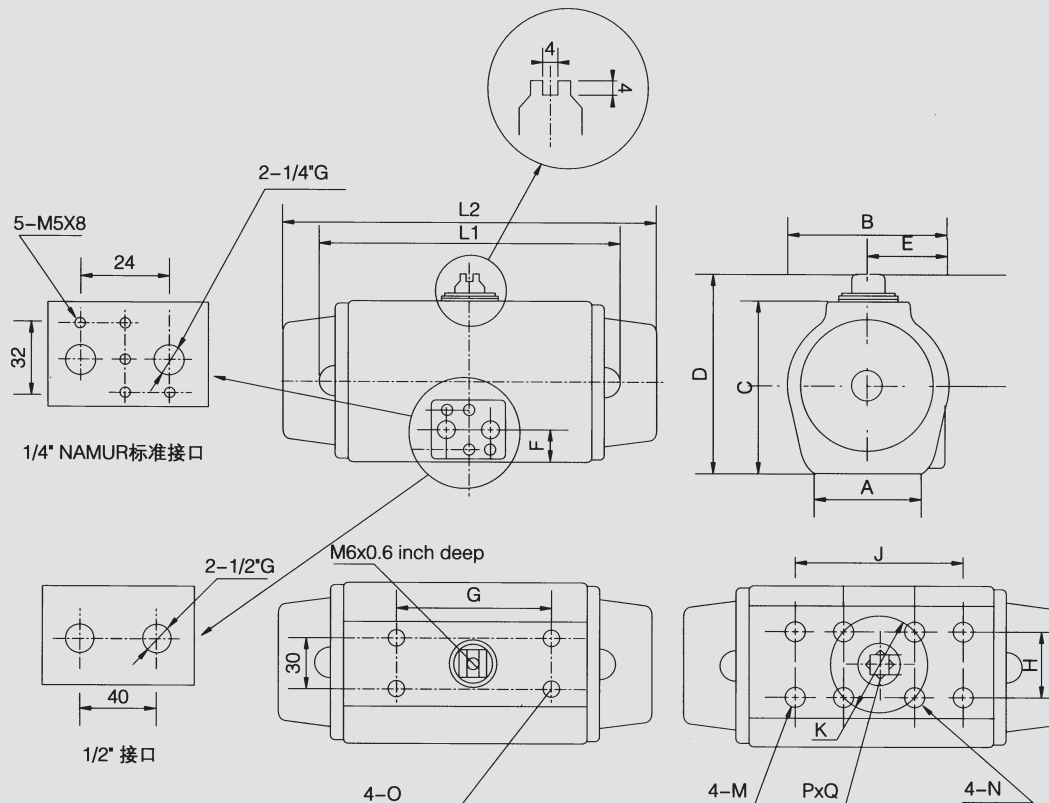
注：*表示根据用户需要的弹簧根数定

气动执行器 (旋转气缸)

Pneumatic Actuator (Rotary Cylinder)

A系列旋转气缸 | A Series Rotary Cylinder

外形尺寸 | Overall Dimension



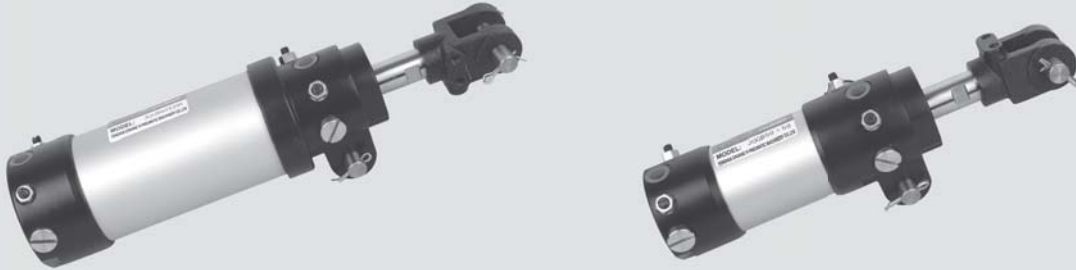
尺寸表 | Dimension Sheet

规格 Specification	A	B	C	D	E	F	G	H	J	K	L1	L2	M	N	O	P	Q	接口螺纹 Joint Bore
45	42	58	65	85	35	23	80	31.75	88.9	42	158	192	M5x6	M5x6	M5x6	11	15	1/4"G
60	48.5	70	81	101	39	23	80	31.75	88.9	50	172	206	M6x8	M6x8	M5x6	14	15	1/4"G
85	66	97	108	128	52	24	80	38	114	70	197	236	M8x12	M8x12	M5x6	19	17	1/4"G
105	80	117	133	153	59.5	30	80	38	114	70	248	290	M8x12	M8x12	M5x6	19	20	1/4"G
125	100	138	155	185	80	33	130	38	114	70	295	390	M10x13	M10x13	M5x8	22	25	1/4"G
140	114	159	175	205	79	35	130	44	138	102	360	490	M12x15	M12x15	M5x8	27	30	1/4"G
160	128	174	196	226	92	33	130	44	138	102	370	560	M12x15	M12x15	M5x8	27	30	1/4"G
210	160	240	258	270	140	75	130	50	164	140	408	624	M16x22	M16x22	M5x8	36	50	1/4"G
270	204	304	344	360	157	90	130	56	188	165	580	790	M20x25	M20x25	M5x8	46	60	1/2"G
300	220	340	360	390	182	60	130	56	188	165	640	838	M20x25	M20x25	M5x8	46	60	1/2"G
350	240	390	440	470	205	105	130	56	188	165	736	924	M20x28	M20x28	M5x8	50	60	1/2"G
400	300	440	480	510	210	110	150	70	210	180	804	1062	M20x28	M20x28	M5x8	60	70	1/2"G

注: 1. L1、L2分别为双作用和单作用旋转气缸的尺寸;
2. P、Q分别为四方对边距离及深度。

JQGB系列气缸

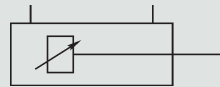
JQGB Series Clamp Cylinder



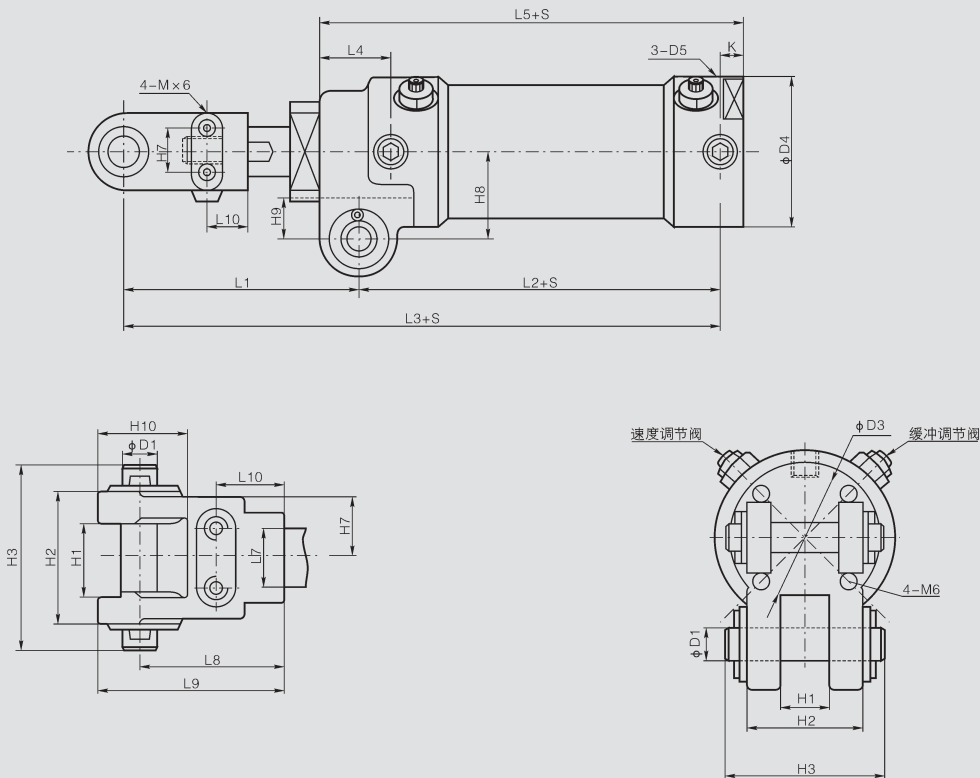
外形尺寸 | Overall Dimension

- 1、本气缸是汽车制造行业专用气缸。
- 2、本气缸行程S可任意选取（50~500内）。

图形符号 | Graphic Symbol



外形尺寸 | Overall Dimension



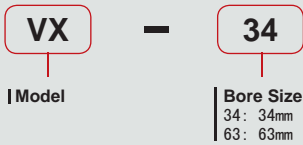
缸径/符号 Bore/ Symbol	L1	L2	L3	L5	L6	L8	L9	L10	H1	H2	H3	H7	H8	H9	H10	φ d	φ d1	φ d3	φ d4	φ d5	K
40	97	97	209	126	45	45	60	15	16.5	40	60	20	35	19	35	20	12	40	60	G1/4"	10
50	97	98	210	127	35	45	60	15	16.5	40	60	20	35	19	35	20	12	40	60	G1/4"	10
63	97	102	214	131	34	45	60	15	16.5	40	60	20	35	19	35	20	12	40	75	G1/4"	10
80	110	120	259	140	40	71	91	34	28	55	75	24	50	23	47	25	18	44	95	G3/8"	13

VX Series Pneumatic Vibrator

Ordering Code Example: VX-34
VX-63



订购码 | Ordering Code



Special Cylinders

For more product information , Please contact our sales



CS1 Damping Cylinder



CS2 Pin Cylinder



CS3 Rotary Cylinder



CS4 Double Stroke Cylinder

Magnetism switch



Sup-03: for XNU MA,SC cylinder
Sup-11: for SDA compact cylinder
Sup-21: for SC,SU cylinder
Sup-30: for XNC cylinder

